

Milwaukee Drain Valves

**Drain Valves
& Samplers For
Transformer &
Switchgear
Coolants**



H-J International, Inc.

3010 High Ridge Blvd High Ridge, Missouri USA 63049

Tel: (636) 677-3421 Fax: (636) 376-1915

www.h-jinternational.com



1" Transformer Drain Valve W/Sampler



200 Lb. WOG & 300 Lb. WOG
Threaded Ends

505-201

The bronze body globe sampler valves are designed for sampling or draining coolant from electrical apparatus. The 505-201 has a sampler boss tapped 3/8" NPT but does not include the M/V 84363-C sampling device. Body is bronze (ASTM B 62). The large port opening insures minimum flow resistance. Available in 1", 1 1/2", and 2" sizes. Rated at 200 lb. WOG.

505-202

Same as 505-201 except with 84363-C sampling device.

505-203

Same as 505-201 except with 3/8" pipe plug.

505-601

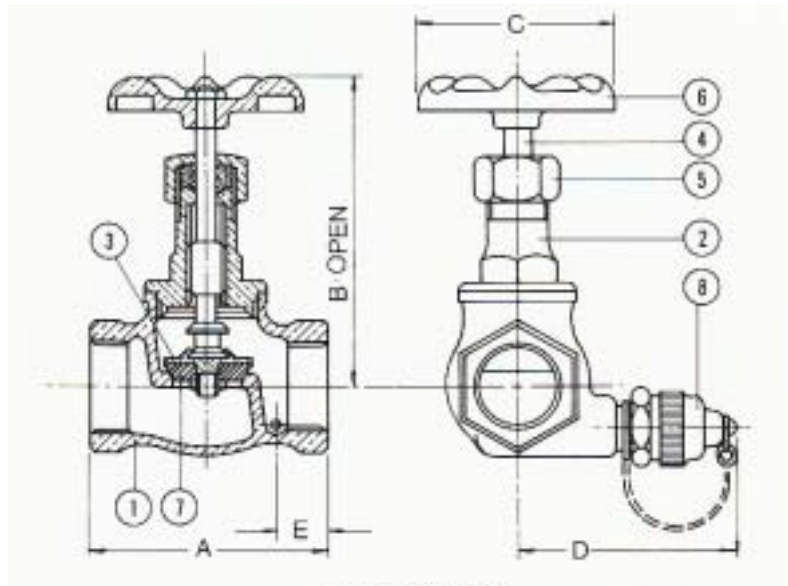
Same as 505-201 except rated at 300 lb. WOG.

505-602

Same as 505-202 except rated at 300 lb. WOG.

505-603

Same as 505-203 except rated at 300 lb. WOG.



MATERIAL LIST

NO.	DESCRIPTION	MATERIAL & SPECIFICATION
1	Body	Bronze
2	Bonnet	Bronze
3	Disc Holder	Brass
4	Stem	Brass
5	Stuff Nut	Brass
6	Handwheel	Bronze
7	Disc	Nylon Zytel 101
8	3/8" Sampler	84363

DIMENSIONS-INCHES

DIM.	VALVE SIZE		
	1	1 1/2	2
A	2 1/16	3 1/16	4 7/16
B	4 3/8	5 3/4	6 3/4
C	2 3/4	3 3/4	4 1/4
D	3 3/16	3 7/16	3 3/4
E	1/16	1/4	1/16



Customized Drain Valves & Accessories

Valves and Accessories

Customized to your needs

H-J International maintains a large inventory of Drain Valves and Accessories and can provide a variety of custom manufactured valves for transformer & switchgear applications. Valves can be ordered with "custom" installed pipe plugs, nipples or both. In addition, H-J can furnish various Pre-Applied Thread Sealers and Threadlockers on the valves, plugs and nipples. Among these products are Vibra-Seal 516 from Loctite Corporation, SAF-T-LOK S90 from SAF-T-LOK Chemical Corporation and others.

Give us a call with your next custom requirements and we will be sure to meet your needs.



Drain Valve with Nipple & Plug Installed utilizing Loctite Vibra-Seal 516 Sealant on all joints



Pipe Nipples with or w/o Loctite Vibra-Seal 516 Sealant



Pipe Plugs with or w/o Loctite Vibra-Seal 516 Sealant



1" Transformer Drain Valve W/O Sampler



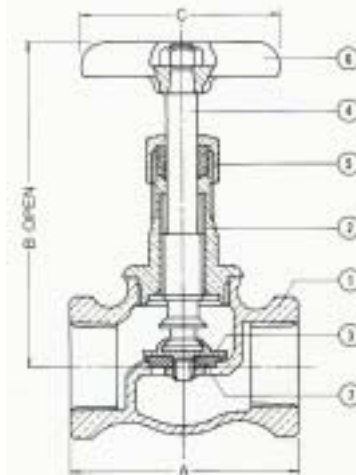
200 Lb. WOG Threaded Ends

505-001

The bronze body globe valves with a Zytel 101 Nylon Disc are suitable for water, transformer coolant, oil and gas; hot or cold applications including steam. The large port minimizes flow resistance. Available in 1/2", 3/4", 1", 1 1/2" and 2".

DIMENSIONS-INCHES

DIM.	VALVE SIZE				
	1/2	3/4	1	1 1/2	2
A	2 3/4	2 9/16	2 13/16	3 1/16	4 3/16
B	3 1/2	3 3/16	4 3/8	5 3/8	6 1/4
C	2 1/4	2 1/4	2 3/4	3 3/4	4



MATERIAL LIST

NO.	DESCRIPTION	MATERIAL & SPECIFICATION
1	Body	Bronze
2	Bonnet	Bronze
3	Disc Holder	Brass
4	Stem	Brass
5	Stuff Nut	Brass
6	Handwheel	Bronze
7	Disc	Nylon Zytel 101



506 Series Offset Transformer Drain Valve



300 Lb. WOG
Offset Flange Inlet & Threaded Outlet

506-201

Flanged offset globe sampler valve (less sampling device). Recommended for sampling or draining coolant from electrical apparatus. The body is offset below the flange to assure complete drainage. Body is heavy-duty bronze to protect against physical damage. Gasket groove in inlet flange is standard. Available in 1" and 2" sizes.

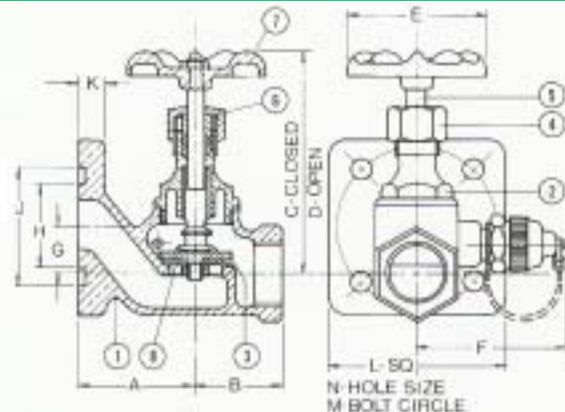
506-202

Same as 506-201 except with 84363-C sampling device.

506-203

Same as 506-201 except with 3/8" pipe plug in sampler boss.

NOTE: Also available with special flange holes.



MATERIAL LIST

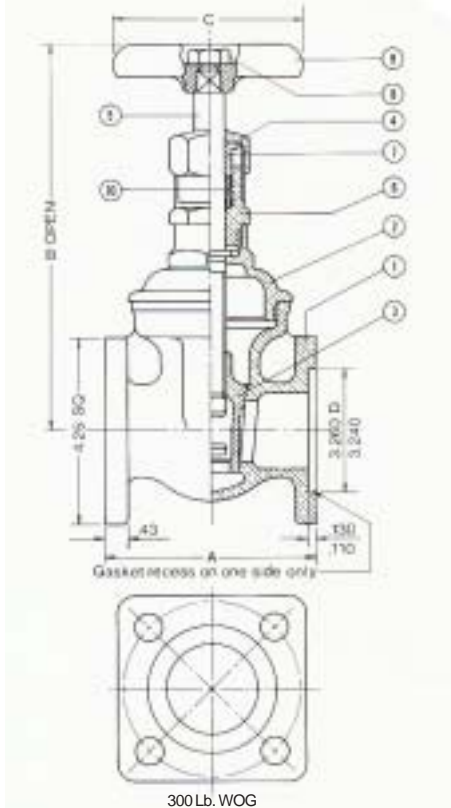
NO.	DESCRIPTION	MATERIAL & SPECIFICATION
1	Body	Bronze
2	Bonnet	Bronze
3	Disc Holder	Brass
4	Stuff Nut	Brass
5	Stem	Brass
6	Gland	Brass
7	Handwheel	Bronze
8	Disc	Nylon Zytel 101

DIMENSIONS-INCHES

DIM.	SIZE		DIM.	SIZE		DIM.	SIZE	
	1	2		1	2		1	2
A	2 3/8	3 1/8	F	3 3/8	3 1/2	L	3 1/8	4 1/8
B	1 1/8	2 1/8	G	1 1/8	1 1/2	M	3 1/8	4 1/8
C	4 1/8	6 1/8	H	1 3/8	2 3/8	N	3/8	3/4
D	4 1/8	7 1/8	J	2 3/8	3 1/8			
E	2 3/8	4 1/8	K	1/2	1 1/8			



2" Transformer Drain Valve (Gate Type)



P-2641

This flange gate valve is a heavy-duty design, solid wedge, screwed bonnet, non-rising stem with gland packing. Specifically designed for rapid fill or drain and vacuum test.

MATERIAL LIST

NO.	DESCRIPTION	MATERIAL & SPECIFICATION
1	Body	Bronze
2	Bonnet	Bronze
3	Wedge	Bronze
4	Stuff Nut	Bronze
5	Stem	Bronze
6	Check Nut	Brass
7	Gland	Brass
8	Wheel Nut	Brass
9	Handwheel	Aluminum
10	Packing	Tef. Impreg. Asb.

DIMENSIONS-INCHES

SIZE	A	B	C
2	3 1/4	7 1/16	3 3/4

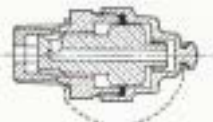


Sampling Devices

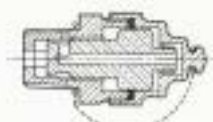


84363-C

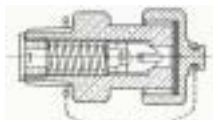
Sampling Device has a protective cap. When cap is removed, fitting on drain outlet controls flow for taking a coolant sample. Coolant sample may be taken directly from sampler or a hose extension (tubing) may be attached to the 5/16" male thread on the end of the fitting. Parts machined from rod brass. Inlet is 3/8" thread.



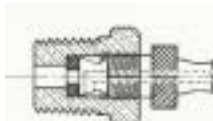
84363C



84363D



84679D



84680D



84363-D

Same as 84363-C except inlet thread is 1/2".



84679-D

Spring loaded, self-closing sampling device with a protective cap. Prevents inadvertent flow, tampering or loss of coolant. Entry of water is also prevented. Can be opened with a standard operating cap or tool.



84680-D

Similar to the 84363-D except it does not have a protective cap. Outlet drain is shaped with a hose bib for tubing connection.



H-J International, Inc. 3010 High Ridge Blvd High Ridge, Missouri, USA 63049

Tel: (636) 677-3421 Fax: (636) 376 - 1915

Web: www.h-jinternational.com