



Qualification Testing

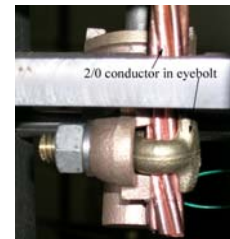
Comprehensive Qualification Testing

These connectors have gone through rigorous mechanical, corrosion and current cycle testing according to various standards such as ANSI C119.4, CSA C57, NEMA CC3/CC1 and H-J Enterprises internal standards and specifications.

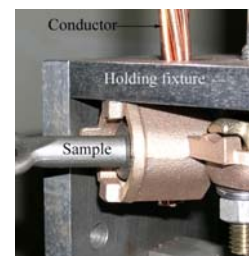
Conductor Damage Test



Pullout Test (Eyebolt)



Pullout Test (Keeper)



Torque Strength Test

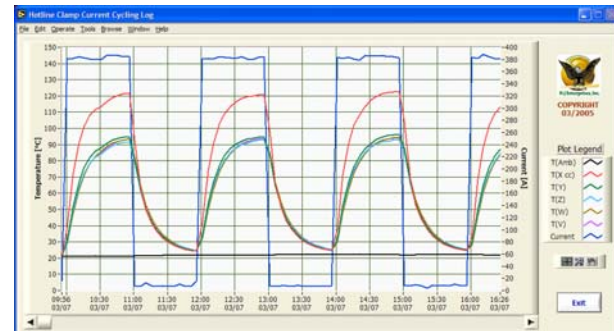


Salt Fog Test

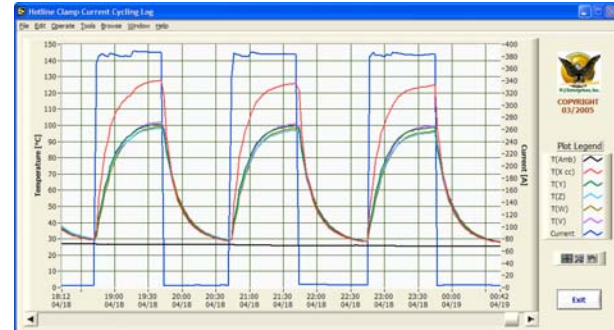


Current Cycling Test

Plot of temperature & AC current readings – first few cycles



Plot of temperature & AC current readings – last few cycles

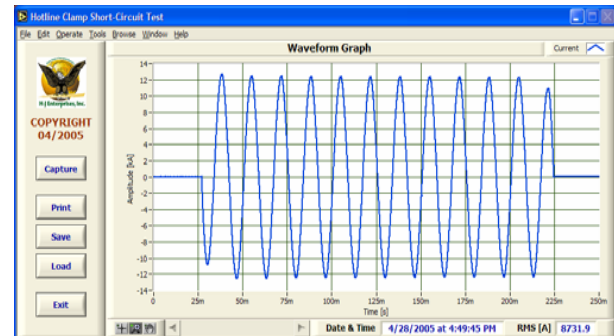


Resistance readings corrected to 20 °C

Cycle	Date	Time	T (Amb)	R(X cc)	R(Y)	R(Z)	R(W)	R(V)	Current
1	3/7/2005	11:59	20.0	167.90	172.03	181.33	193.25	165.51	30.22
25	3/9/2005	12:16	20.0	167.13	172.02	181.10	192.77	164.76	30.19
50	3/11/2005	14:33	20.0	167.19	171.63	181.80	193.16	164.66	30.18
75	3/13/2005	16:49	20.0	167.77	171.97	181.89	193.65	164.89	30.18
100	3/15/2005	19:06	20.0	167.63	171.80	182.06	193.69	164.74	30.18
125	3/17/2005	21:23	20.0	167.73	172.00	182.29	193.89	164.86	30.17
145	3/21/2005	5:51	20.0	167.49	172.11	182.59	193.81	164.72	30.18
205	3/24/2005	15:10	20.0	167.60	172.42	183.15	194.05	164.83	30.19
245	3/27/2005	23:37	20.0	167.21	172.52	183.13	194.12	164.61	30.19
325	4/3/2005	19:34	20.0	167.34	172.17	183.16	193.56	164.37	30.20
405	4/10/2005	13:49	20.0	167.19	171.89	182.92	193.35	164.20	30.19
485	4/17/2005	18:33	20.0	167.29	171.82	182.99	193.12	164.11	30.20
500	4/19/2005	0:45	20.0	167.24	171.68	182.81	193.15	163.91	30.18
Average				167.44	172.00	182.40	193.51	164.63	30.19

Legend: 'T' is temperature in °C. 'R' is resistance in micro-Ohm.

Short-Circuit Test



H-J Enterprises, Inc. Hot Line & Stirrup Clamps

Quality Products to meet the Demands of Today's Utilities



H-J Enterprises, Inc.
3010 High Ridge Blvd High Ridge, Missouri USA 63049
Tel: (636) 677-3421 Fax: (636) 376-1915
www.h-jenterprises.com



A full aluminum version of this clamp is also available which integrates a tin plated aluminum bronze eyebolt and a stainless steel eyestem.

STIRRUP CLAMP

These clamps are offered in single or double current path design. The jaw and base ensure adequate conductor contact; reduce joint temperature and minimize conductor cold flow. This design also reduces twisting of the conductor during installation and placement. The spring loaded eyestem helps compensate for cold flow and offsets tightening torque vibrations. This feature also compensates for the variables caused by fault currents, loads, and atmospheric changes and conditions.

HOT LINE & STIRRUP CLAMPS

H-J Enterprises makes a complete line of distribution connectors used on overhead primary taps that are suitable for all environments and weather conditions.

H-J Enterprises distribution connectors are designed using high strength electrical bronze and aluminum alloys as well as stainless steel providing corrosion free environment throughout the life of the product. Tin plating is also available for additional outdoor protection.

HOT LINE CLAMP

The keeper and jaw design ensure adequate conductor contact; reduce joint temperature and minimize conductor cold flow. This design also reduces twisting of the conductor during installation and placement. The spring loaded eyestem helps compensate for cold flow and offsets tightening torque vibrations. This feature also compensates for the variables caused by fault currents, loads, and atmospheric changes and conditions. Aluminum bronze eyebolts provide high strength and uniform expansion under loading. The side positioned tap connection prevents possible corrosion of conductor or clamp on bi-metal connections.



Features

Electrical Bronze or Aluminum Alloy

Corrosion Resistant Hardware

Extra Strength Aluminum Bronze Eyebolts

Tin Plating Available on all Models

Inhibitor Filled Conductor Groove

Spring Loaded Eyestems

Captive Hardware

RUS Listed

The bail or stirrup is made out of hard drawn copper and tin plated to give a seamless interface with its mating aluminum body.

Oxide inhibitor and high temperature grease ensure functionality of the turning parts in all weather conditions.

Bronze Hot Line Clamps

BRONZE HOT LINE TAP CLAMPS										
PART NUMBER	CONNECTION		PLATING	PACKAGING	CONDUCTOR RANGE (AWG OR KCMIL)		DIMENSIONS - INCHES (MM)			APPROX. WT. EACH LBS. (KG.)
	MAIN LINE	TAP			MAIN	TAP	A	B	C	
UBBC20-001*	CU	CU	None	BOX	#8 Sol. - 2/0 Str. 0.128" - 0.414" (3.25 - 10.54 mm)	#8 Sol. - 2/0 Str. 0.128" - 0.414" (3.25 - 10.54 mm)	4.42" (112.27)	1.33" (33.65)	2.56" (65.02)	0.7 (0.32)
UBBC20-001XB	CU	CU	None	Inhibitor & Bag						
UBBC20-001TP	CU	CU	TIN PLATED	BOX						
UBBC20-001TPXB	CU	CU	TIN PLATED	Inhibitor & Bag						

* RUS Listed

Aluminum Hot Line Clamps

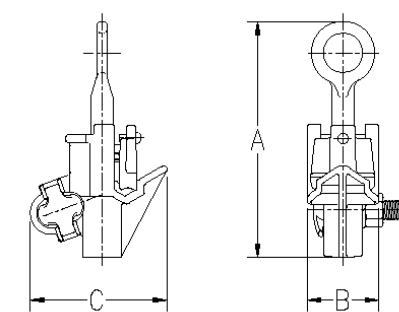
ALUMINUM HOT LINE TAP CLAMPS												
PART NUMBER	CONNECTION		PLATING	PACKAGING	CONDUCTOR RANGE (AWG OR KCMIL)				DIMENSIONS - INCHES (MM)			APPROX. WT. EACH LBS. (KG.)
	MAIN LINE	TAP			MAIN		TAP		A	B	C	
UBBC30-001*	AL	AL	NONE	BOX	AAC	ACSR	AAC/CU	ACSR	6.32" (160.53)	1.78" (45.21)	3.49" (88.65)	0.8 (0.36)
UBBC30-001TP*	AL	AL/CU	TIN PLATED	BOX	#6 Sol. - 600 MCM	#8 Sol. - 556.5 MCM	#6 Sol. - 266.8 MCM	#6 Sol. - 4/0 Str.				
UBBC30-001TPXB	AL	AL/CU	TIN PLATED	Inhibitor & Bag	0.157" - 0.905" (4.00 - 23.03 mm)		0.157" - 0.593" (4.00 - 15.07 mm)					

* RUS Listed

Aluminum Stirrup Clamps

ALUMINUM STIRRUP CLAMPS								
PART NUMBER	CONDUCTOR RANGE (AWG OR KCMIL)		COPPER LOOP SIZE	BOLTS		DIMENSIONS - INCHES (MM)		
	AAC	ACSR		NO.	SIZE (MM)	A	B	C
UAHLS10-001	#6 Sol - 2/0 Str.	#8 Sol - 2/0 Str.	#1 (0.289)	1	3/8" (9.52)	1.81" (45.97)	2.56" (65.02)	4.16" (105.66)
UAHLS30-001	1/0 - 500 MCM	1/0 - 397.5 MCM	1/0 (0.325)	2	7/16" (11.11)	4.00" (101.60)	4.33" (109.98)	4.50" (114.30)

Hot Line Clamps



Stirrup Clamps

