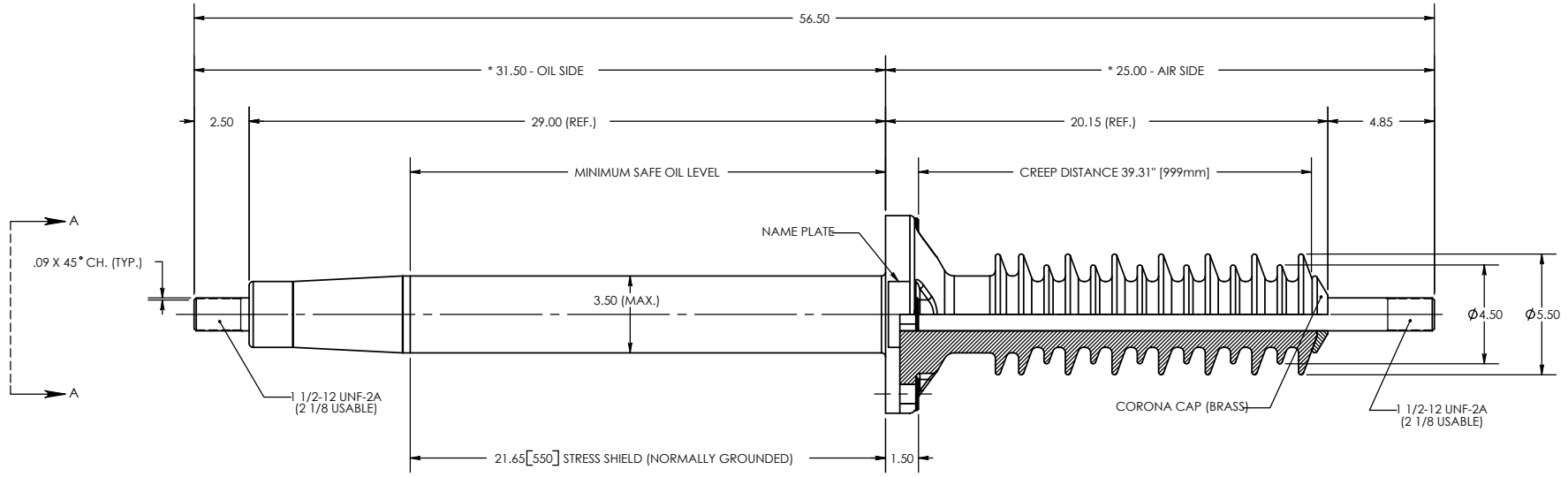
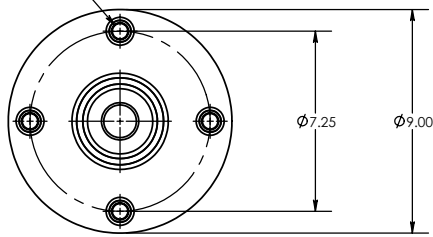


THE INFORMATION CONTAINED IN THIS DRAWING IS THE SOLE PROPERTY OF ENGINEERED POWER COMPONENTS LTD. ANY REPRODUCTION IN PART OR WHOLE WITHOUT THE WRITTEN PERMISSION OF ENGINEERED POWER COMPONENTS LTD. IS PROHIBITED.

REV. 0  
CAD FILE: 2000 SERIES  
DWG. NO. 20-500-500



(4) Ø.63 ID BRASS MOUNTING SLEEVES  
C/W Ø1.13 X .19 DP, COUNTERBORE  
EQUALLY SPACED ON A Ø7.25 B.C.




VIEW A-A

- NOTES:  
1. ALL CONTACT SURFACES TO BE CLEAN & FREE FROM FLASH  
2. CANTILEVER LOAD SPECIFICATION, BASED ON (STATIC) LOAD APPLIED HORIZONTALLY AT CENTER POINT OF TOP STUD.

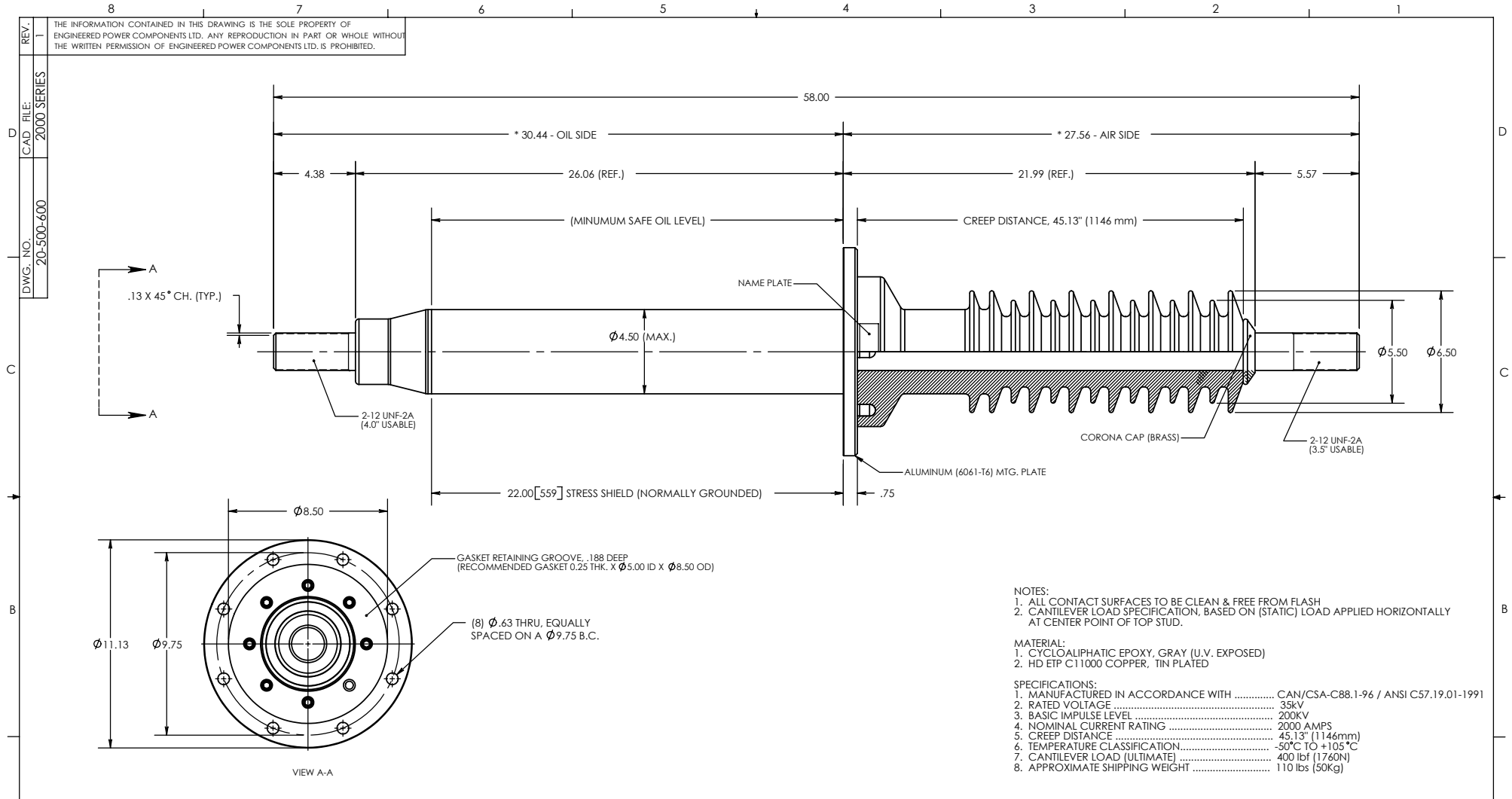
- MATERIAL:  
1. CYCLOALIPHATIC EPOXY, GRAY (U.V. EXPOSED)  
2. HD ETP C11000 COPPER, TIN PLATED

- SPECIFICATIONS:  
1. MANUFACTURED IN ACCORDANCE WITH ..... CAN/CSA-C88.1-96 / ANSI C57.19.01-1991  
2. RATED VOLTAGE ..... 35kV  
3. BASIC IMPULSE LEVEL ..... 200kV  
4. NOMINAL CURRENT RATING ..... 1200 AMPS  
5. CREEP DISTANCE ..... 39.31" (999mm)  
6. TEMPERATURE CLASSIFICATION ..... -50°C TO +105°C  
7. CANTILEVER LOAD (ULTIMATE) ..... 150 lbf (660N)  
8. APPROXIMATE SHIPPING WEIGHT ..... 64 lbs (29.1kg)

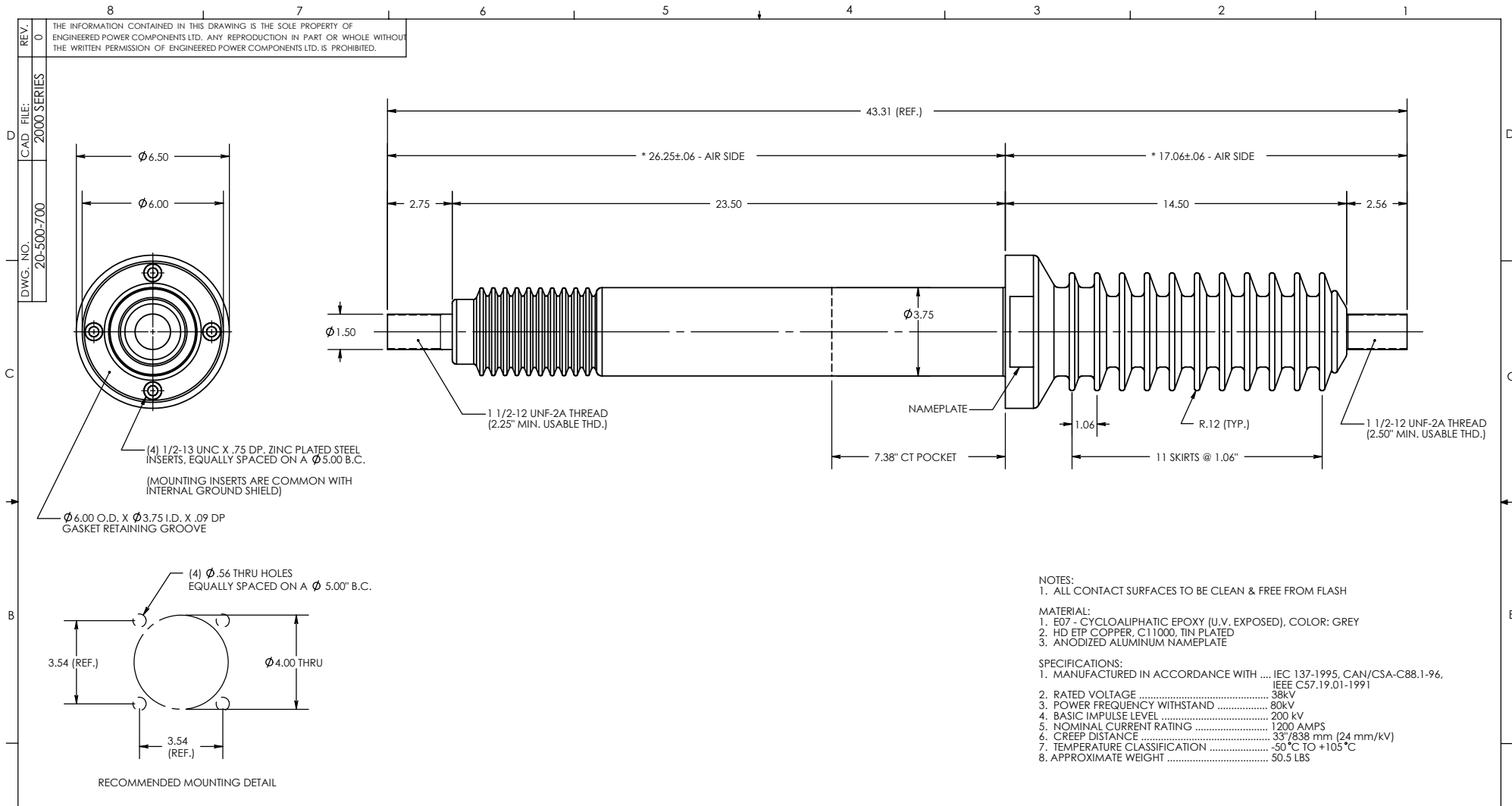
REV.	REVISIONS
0	

ITEM NO.	PART OR IDENTIFYING NO.	NOMENCLATURE OR DESCRIPTION	MATERIAL SPECIFICATION	QTY REQD.
UNLESS OTHERWISE SPECIFIED DIMENSIONS ARE IN INCHES TOLERANCES ARE:		CAD GENERATED DRAWING. DO NOT MANUALLY UPDATE.		35kV / 1200A
ONE PLACE MM: ±0.50 TWO PLACE MM: ±0.25 TWO PLACE DEC: ±0.020 THREE PLACE DEC: ±0.010 ANGLES: ±1° TEMPERATURE: ±5°C VOLTAGE: ±5% AMPERAGE: ±5% RESISTANCE: ±5%				
* STATISTICAL DIMENSION NO. OF SAMPLES [ 2 ]		TOOLING REF. T20-500-5	SIZE B	REV. 0
PRODUCT GROUP 2000 SERIES		SCALE 1:5	DWG. NO. 20-500-500	SHEET 1 OF 1

POWER APPARATUS BUSHING



REF.	REVISIONS	ITEM NO.	PART OR IDENTIFYING NO.	NOMENCLATURE OR DESCRIPTION	MATERIAL SPECIFICATION	QTY REQD.
0	1					
	DIM ABOVE FLANGE WAS INCREASED FROM .0015 TO .0020. DIM 21.26 WAS 25.06 DIM 58.00 WAS 55.00 DB 07/08/2002			UNLESS OTHERWISE SPECIFIED DIMENSIONS ARE IN INCHES TOLERANCES ARE: ONE PLACE MM: ±0.50 TWO PLACE MM: ±0.25 TWO PLACE DEC: ±0.00 THREE PLACE DEC: ±0.10 ANGLES: 1° TEMPERATURE: ±5°C VOLTAGE: ±5% AMPERAGE: ±5% RESISTANCE: ±5%	CAD GENERATED DRAWING. DO NOT MANUALLY UPDATE. APPROVALS: DATE: DRAWN BY: DB 15/10/2001 CHECKED BY: ENGINEERING DB 31/10/2001	 35KV / 2000A POWER APPARATUS BUSHING
			* STATISTICAL DIMENSION NO. OF SAMPLES [ 2 ]	TOOLING REF. T20-500-6 PRODUCT GROUP 2000 SERIES	SIZE DWG. NO. B 20-500-600 SCALE 1:5 CAD FILE: 2000 SERIES	REV. 1 SHEET 1 OF 1



NOTES:  
 1. ALL CONTACT SURFACES TO BE CLEAN & FREE FROM FLASH

MATERIAL:  
 1. E07 - CYCLOALIPHATIC EPOXY (U.V. EXPOSED), COLOR: GREY  
 2. HD ETP COPPER, C11000, TIN PLATED  
 3. ANODIZED ALUMINUM NAMEPLATE

SPECIFICATIONS:  
 1. MANUFACTURED IN ACCORDANCE WITH .... IEC 137-1995, CAN/CSA-C88.1-96, IEEE C57.19.01-1991  
 2. RATED VOLTAGE ..... 38kV  
 3. POWER FREQUENCY WITHSTAND ..... 80kV  
 4. BASIC IMPULSE LEVEL ..... 200 kV  
 5. NOMINAL CURRENT RATING ..... 1200 AMPS  
 6. CREEP DISTANCE ..... 33"/838 mm (24 mm/kV)  
 7. TEMPERATURE CLASSIFICATION ..... -50 °C TO +105 °C  
 8. APPROXIMATE WEIGHT ..... 50.5 LBS

REV.	NO.	DESCRIPTION	DATE	BY	CHECKED	DATE	BY	DATE	SCALE	DWG. NO.	REV.																																																																						
0										20-500-700	0																																																																						
REVISIONS		<table border="1"> <thead> <tr> <th>ITEM NO.</th> <th>PART OR IDENTIFYING NO.</th> <th>NOMENCLATURE OR DESCRIPTION</th> <th>MATERIAL SPECIFICATION</th> <th>QTY REQD</th> </tr> </thead> <tbody> <tr> <td colspan="5">UNLESS OTHERWISE SPECIFIED DIMENSIONS ARE IN INCHES</td> </tr> <tr> <td colspan="5">TOLERANCES ARE:</td> </tr> <tr> <td>ONE PLACE MM</td> <td>±0.50</td> <td colspan="3"></td> </tr> <tr> <td>TWO PLACE MM</td> <td>±0.25</td> <td colspan="3"></td> </tr> <tr> <td>TWO PLACE DEC.</td> <td>±0.020</td> <td colspan="3"></td> </tr> <tr> <td>THREE PLACE DEC.</td> <td>±0.010</td> <td colspan="3"></td> </tr> <tr> <td>ANGLES</td> <td>1°</td> <td colspan="3"></td> </tr> <tr> <td>TEMPERATURE</td> <td>±5 °C</td> <td colspan="3"></td> </tr> <tr> <td>VOLTAGE</td> <td>±5 %</td> <td colspan="3"></td> </tr> <tr> <td>AMPERAGE</td> <td>±5 %</td> <td colspan="3"></td> </tr> <tr> <td>RESISTANCE</td> <td>±5 %</td> <td colspan="3"></td> </tr> <tr> <td colspan="2">* STATISTICAL DIMENSION</td> <td colspan="2">TOOLING REF. T20-500-7</td> <td>SIZE B</td> </tr> <tr> <td colspan="2">NO. OF SAMPLES [ 0 ]</td> <td colspan="2">PRODUCT GROUP 2000 SERIES</td> <td>SCALE 1:4</td> </tr> </tbody> </table>										ITEM NO.	PART OR IDENTIFYING NO.	NOMENCLATURE OR DESCRIPTION	MATERIAL SPECIFICATION	QTY REQD	UNLESS OTHERWISE SPECIFIED DIMENSIONS ARE IN INCHES					TOLERANCES ARE:					ONE PLACE MM	±0.50				TWO PLACE MM	±0.25				TWO PLACE DEC.	±0.020				THREE PLACE DEC.	±0.010				ANGLES	1°				TEMPERATURE	±5 °C				VOLTAGE	±5 %				AMPERAGE	±5 %				RESISTANCE	±5 %				* STATISTICAL DIMENSION		TOOLING REF. T20-500-7		SIZE B	NO. OF SAMPLES [ 0 ]		PRODUCT GROUP 2000 SERIES		SCALE 1:4
ITEM NO.	PART OR IDENTIFYING NO.	NOMENCLATURE OR DESCRIPTION	MATERIAL SPECIFICATION	QTY REQD																																																																													
UNLESS OTHERWISE SPECIFIED DIMENSIONS ARE IN INCHES																																																																																	
TOLERANCES ARE:																																																																																	
ONE PLACE MM	±0.50																																																																																
TWO PLACE MM	±0.25																																																																																
TWO PLACE DEC.	±0.020																																																																																
THREE PLACE DEC.	±0.010																																																																																
ANGLES	1°																																																																																
TEMPERATURE	±5 °C																																																																																
VOLTAGE	±5 %																																																																																
AMPERAGE	±5 %																																																																																
RESISTANCE	±5 %																																																																																
* STATISTICAL DIMENSION		TOOLING REF. T20-500-7		SIZE B																																																																													
NO. OF SAMPLES [ 0 ]		PRODUCT GROUP 2000 SERIES		SCALE 1:4																																																																													



