
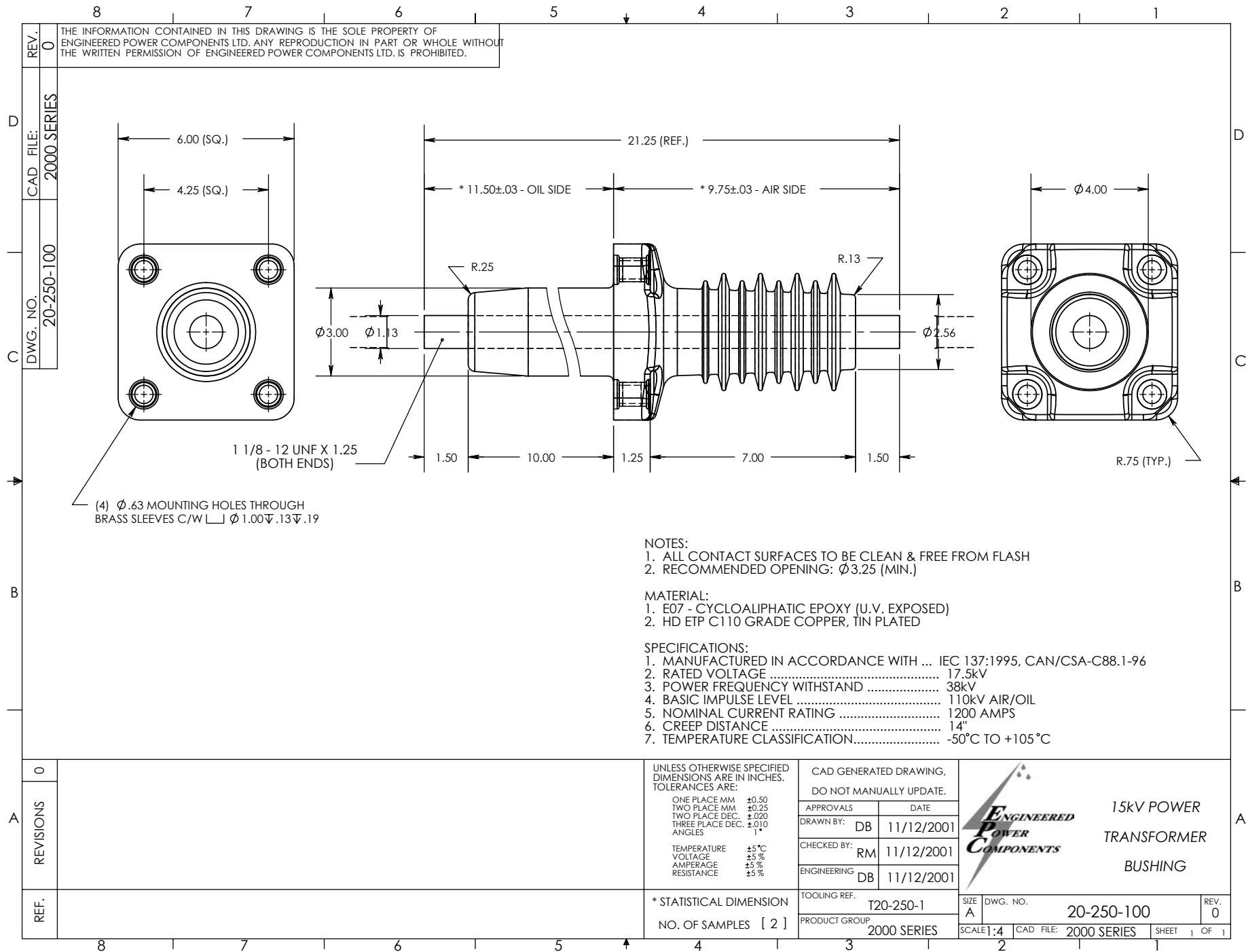



- NOTES:
1. ALL CONTACT SURFACES TO BE CLEAN & FREE FROM FLASH
  2. RECOMMENDED OPENING: Ø3.25 (MIN.)

- MATERIAL:
1. E04 - CYCLOALIPHATIC EPOXY (U.V. EXPOSED)
  2. C110 GRADE COPPER, TIN PLATED

- SPECIFICATIONS:
1. MANUFACTURED IN ACCORDANCE WITH ... IEC 137:1995, CAN/CSA-C88.1-96
  2. RATED VOLTAGE ..... 17.5kV
  3. POWER FREQUENCY WITHSTAND ..... 38kV
  4. BASIC IMPULSE LEVEL ..... 95kV AIR/OIL
  5. NOMINAL CURRENT RATING ..... 1200 AMPS
  6. CREEP DISTANCE ..... 14"
  7. TEMPERATURE CLASSIFICATION..... -50°C TO +105°C

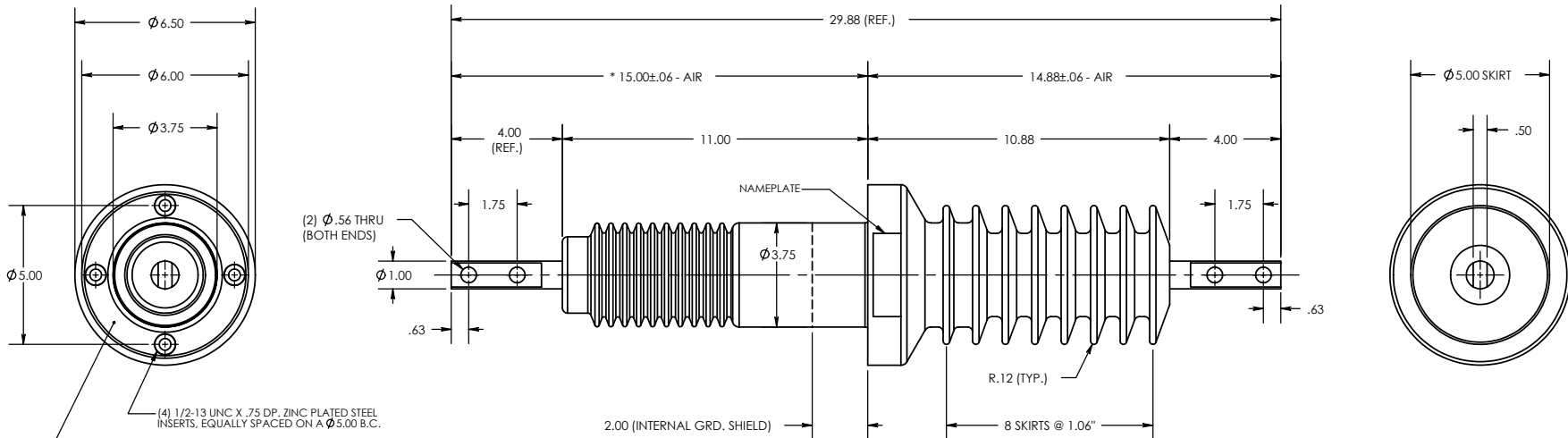
A	REVISIONS	0	1	UNLESS OTHERWISE SPECIFIED DIMENSIONS ARE IN INCHES. TOLERANCES ARE: ONE PLACE MM ±0.50 TWO PLACE MM ±0.25 TWO PLACE DEC. ±0.020 THREE PLACE DEC. ±0.010 ANGLES 1° TEMPERATURE ±5°C VOLTAGE ±5% AMPERAGE ±5% RESISTANCE ±5%	CAD GENERATED DRAWING, DO NOT MANUALLY UPDATE. APPROVALS DATE DRAWN BY: DB 05/15/2001 CHECKED BY: ENGINEERING		15kV POWER TRANSFORMER BUSHING	REV. 1
	REF.	C2	* STATISTICAL DIMENSION NO. OF SAMPLES [ 2 ]					



A	REVISIONS	0	UNLESS OTHERWISE SPECIFIED DIMENSIONS ARE IN INCHES. TOLERANCES ARE:	ONE PLACE MM ±0.50 TWO PLACE MM ±0.25 TWO PLACE DEC. ±0.020 THREE PLACE DEC. ±0.010 ANGLES 1°	TEMPERATURE ±5°C VOLTAGE ±5% AMPERAGE ±5% RESISTANCE ±5%	CAD GENERATED DRAWING, DO NOT MANUALLY UPDATE.			15kV POWER TRANSFORMER BUSHING
	REF.					APPROVALS	DATE		
							DRAWN BY: DB 11/12/2001 CHECKED BY: RM 11/12/2001 ENGINEERING: DB 11/12/2001		
							TOOLING REF. T20-250-1 PRODUCT GROUP 2000 SERIES	SCALE: 4 CAD FILE: 2000 SERIES	SHEET 1 OF 1

THE INFORMATION CONTAINED IN THIS DRAWING IS THE SOLE PROPERTY OF ENGINEERED POWER COMPONENTS LTD. ANY REPRODUCTION IN PART OR WHOLE WITHOUT THE WRITTEN PERMISSION OF ENGINEERED POWER COMPONENTS LTD. IS PROHIBITED.

REV. 0  
 DWG. NO. 20-250-200  
 CAD FILE: 2000 SERIES

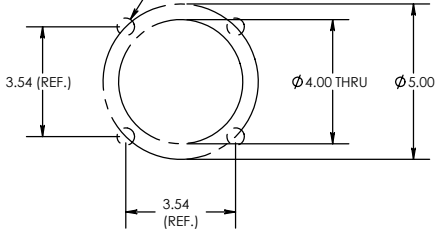


(4) 1/2-13 UNC X .75 DP, ZINC PLATED STEEL INSERTS, EQUALLY SPACED ON A Ø5.00 B.C.  
 (MOUNTING INSERTS ARE COMMON WITH INTERNAL GROUND SHIELD)

Ø6.00 O.D. X Ø3.75 I.D. X .09 DP GASKET RETAINING GROOVE

(4) Ø.56 THRU HOLES EQUALLY SPACED ON A Ø 5.00" B.C.

RECOMMENDED MOUNTING DETAIL



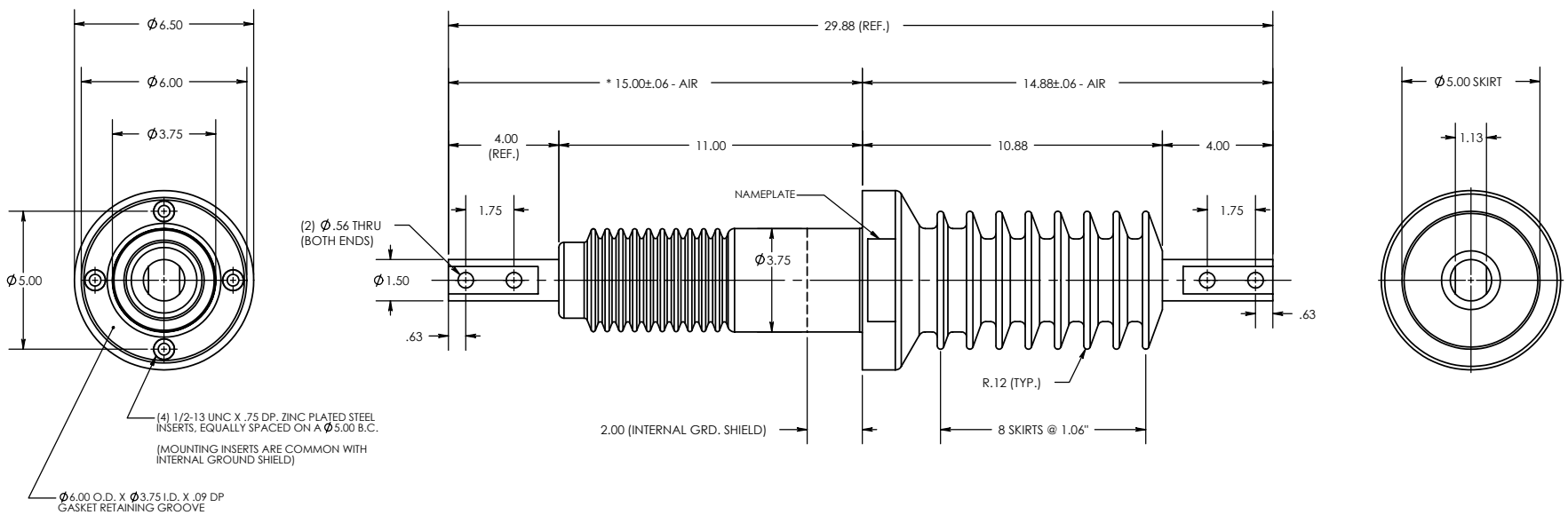
- NOTES:  
 1. ALL CONTACT SURFACES TO BE CLEAN & FREE FROM FLASH
- MATERIAL:  
 1. E07 - CYCLOALIPHATIC EPOXY (U.V. EXPOSED), COLOR: GREY  
 2. C110 GRADE COPPER, SILVER PLATED
- SPECIFICATIONS:  
 1. MANUFACTURED IN ACCORDANCE WITH .... IEC 137-1995, CAN/CSA-C88.1-96, IEEE C57.19.01-1991  
 2. RATED VOLTAGE ..... 15kV  
 3. POWER FREQUENCY WITHSTAND ..... 50kV  
 4. BASIC IMPULSE LEVEL ..... 110kV  
 5. NOMINAL CURRENT RATING ..... 600 AMPS  
 6. CREEP DISTANCE ..... 22.5"/572 mm (38 mm/kV)  
 7. TEMPERATURE CLASSIFICATION..... -50°C TO +105°C

REV.	REVISIONS
0	

ITEM NO.	PART OR IDENTIFYING NO.	NOMENCLATURE OR DESCRIPTION	MATERIAL SPECIFICATION	QTY REQD
UNLESS OTHERWISE SPECIFIED DIMENSIONS ARE IN INCHES TOLERANCES ARE: ONE PLACE MM .Ø.50 TWO PLACE MM .Ø.25 TWO PLACE DEC. .Ø.020 THREE PLACE DEC. .Ø.010 ANGLES 1° TEMPERATURE ±5°C VOLTAGE ±5% AMPERAGE ±5% RESISTANCE ±5%				
CAD GENERATED DRAWING. DO NOT MANUALLY UPDATE. APPROVALS DATE DRAWN BY: DB 28/02/2002 CHECKED BY: RM 05/03/2002 ENGINEERING DB 05/03/2002		POWER APPARATUS BUSHING 15kV / 600A		
* STATISTICAL DIMENSION NO. OF SAMPLES [ 1 ]		TOOLING REF. T20-250-2 PRODUCT GROUP 2000 SERIES SIZE DWG. NO. 20-250-200 SCALE 1:4 CAD FILE: 2000 SERIES SHEET 1 OF 1		

REV. 0  
 DWG. NO. 20-250-300  
 CAD FILE: 2000 SERIES

THE INFORMATION CONTAINED IN THIS DRAWING IS THE SOLE PROPERTY OF ENGINEERED POWER COMPONENTS LTD. ANY REPRODUCTION IN PART OR WHOLE WITHOUT THE WRITTEN PERMISSION OF ENGINEERED POWER COMPONENTS LTD. IS PROHIBITED.



(4) 1/2-13 UNC X .75 DP, ZINC PLATED STEEL INSERTS, EQUALLY SPACED ON A Ø5.00 B.C.  
 (MOUNTING INSERTS ARE COMMON WITH INTERNAL GROUND SHIELD)

Ø6.00 O.D. X Ø3.75 I.D. X .09 DP GASKET RETAINING GROOVE

(2) Ø.56 THRU (BOTH ENDS)

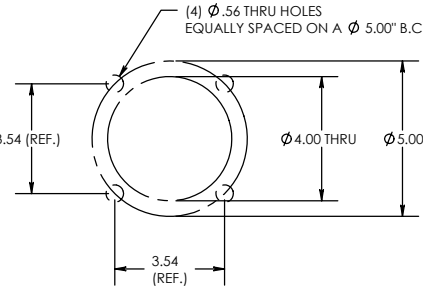
NAMEPLATE

R.12 (TYP.)

2.00 (INTERNAL GRD. SHIELD)

8 SKIRTS @ 1.06"

RECOMMENDED MOUNTING DETAIL



- NOTES:  
 1. ALL CONTACT SURFACES TO BE CLEAN & FREE FROM FLASH
- MATERIAL:  
 1. E07 - CYCLOALIPHATIC EPOXY (U.V. EXPOSED), COLOR: GREY  
 2. C110 GRADE COPPER, SILVER PLATED
- SPECIFICATIONS:  
 1. MANUFACTURED IN ACCORDANCE WITH .... IEC 137-1995, CAN/CSA-C88.1-96, IEEE C57.19.01-1991  
 2. RATED VOLTAGE ..... 15kV  
 3. POWER FREQUENCY WITHSTAND ..... 50kV  
 4. BASIC IMPULSE LEVEL ..... 110kV  
 5. NOMINAL CURRENT RATING ..... 1200 AMPS  
 6. CREEP DISTANCE ..... 22.5"/572 mm (38 mm/kV)  
 7. TEMPERATURE CLASSIFICATION..... -50°C TO +105°C

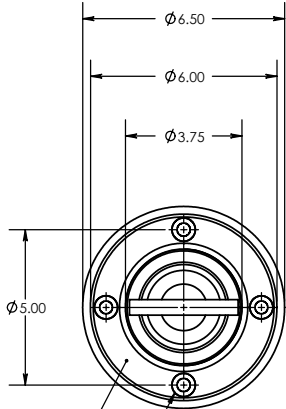
REV.	DESCRIPTION
0	

ITEM NO.	PART OR IDENTIFYING NO.	NOMENCLATURE OR DESCRIPTION	MATERIAL SPECIFICATION	QTY REQD
UNLESS OTHERWISE SPECIFIED DIMENSIONS ARE IN INCHES TOLERANCES ARE: ONE PLACE MM .Ø.50 TWO PLACE MM .Ø.25 TWO PLACE DEC. .Ø.020 THREE PLACE DEC. .Ø.010 ANGLES 1°				
CAD GENERATED DRAWING. DO NOT MANUALLY UPDATE. APPROVALS DATE DRAWN BY: DB 07/10/2002 CHECKED BY: RM 08/10/2002 ENGINEERING DB 08/10/2002		POWER APPARATUS BUSHING 15kV / 1200A		
* STATISTICAL DIMENSION NO. OF SAMPLES [ 1 ]		TOOLING REF. T20-250-3 PRODUCT GROUP 2000 SERIES	SIZE DWG. NO. B 20-250-300 SCALE 1:4 CAD FILE: 2000 SERIES	REV. 0 SHEET 1 OF 1

8 7 6 5 4 3 2 1

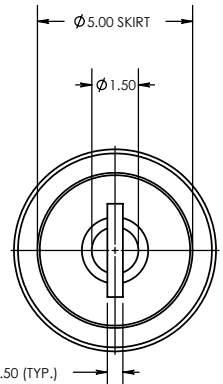
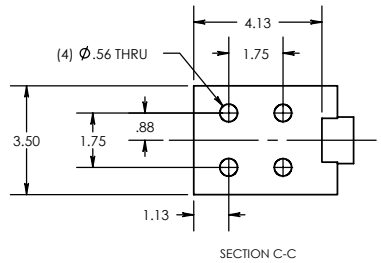
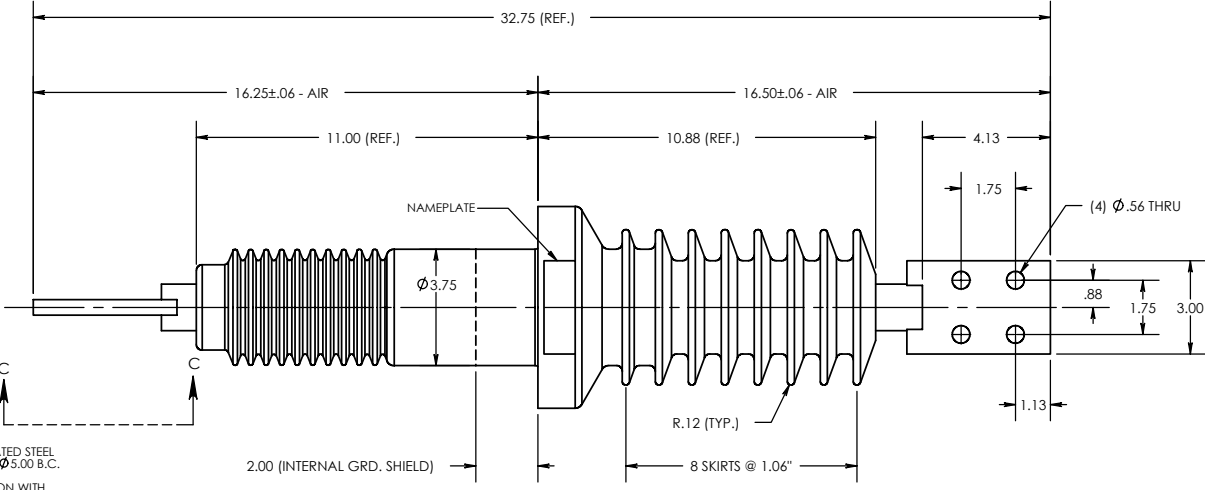
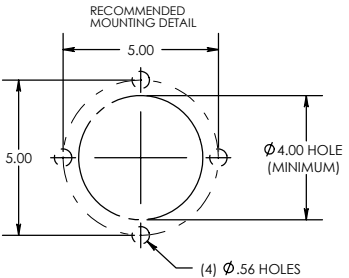
REV. 0  
 THE INFORMATION CONTAINED IN THIS DRAWING IS THE SOLE PROPERTY OF ENGINEERED POWER COMPONENTS LTD. ANY REPRODUCTION IN PART OR WHOLE WITHOUT THE WRITTEN PERMISSION OF ENGINEERED POWER COMPONENTS LTD. IS PROHIBITED.

DWG. NO. 20-250-301  
 CAD FILE: 2000.SERIES



(4) 1/2-13 UNC X .75 DP, ZINC PLATED STEEL INSERTS, EQUALLY SPACED ON A  $\phi$  5.00 B.C.  
 (MOUNTING INSERTS ARE COMMON WITH INTERNAL GROUND SHIELD)

$\phi$  6.00 O.D. X  $\phi$  3.75 I.D. X .09 DP GASKET RETAINING GROOVE



- NOTES:  
 1. ALL CONTACT SURFACES TO BE CLEAN & FREE FROM FLASH
- MATERIAL:  
 1. E07 - CYCLOALIPHATIC EPOXY (U.V. EXPOSED), COLOR: GREY  
 2. HD ETP C11000 GRADE COPPER, SILVER PLATED
- SPECIFICATIONS:  
 1. MANUFACTURED IN ACCORDANCE WITH IEC 137-1995, CAN/CSA-C88.1-96, IEEE C57.19.01-1991  
 2. RATED VOLTAGE ..... 15kV  
 3. POWER FREQUENCY WITHSTAND ..... 50kV  
 4. BASIC IMPULSE LEVEL ..... 110kV  
 5. NOMINAL CURRENT RATING ..... 1200 AMPS  
 6. CREEP DISTANCE ..... 22.5"/572 mm (38 mm/kV)  
 7. TEMPERATURE CLASSIFICATION..... -50°C TO +105°C

REV.	NO.	DESCRIPTION
0		

ITEM NO.	PART OR IDENTIFYING NO.	NOMENCLATURE OR DESCRIPTION	MATERIAL SPECIFICATION	QTY REQD
UNLESS OTHERWISE SPECIFIED DIMENSIONS ARE IN INCHES TOLERANCES ARE: ONE PLACE MM ±0.50 TWO PLACE MM ±0.25 TWO PLACE DEC. ±0.020 THREE PLACE DEC. ±0.010 ANGLES 1° TEMPERATURE ±5°C VOLTAGE ±5% AMPERAGE ±5% RESISTANCE ±5%				
CAD GENERATED DRAWING, DO NOT MANUALLY UPDATE. APPROVALS DATE DRAWN BY: DB 05/03/2003 CHECKED BY: RM 07/03/2003 ENGINEERING DB 07/03/2003		POWER APPARATUS BUSHING 15kV / 1200A		
* STATISTICAL DIMENSION NO. OF SAMPLES [ 0 ]		TOOLING REF. T20-250-3 PRODUCT GROUP 2000 SERIES SIZE DWG. NO. B 20-250-301 SCALE 1:4 CAD FILE: 2000.SERIES SHEET 1 OF 1		

8 7 6 5 4 3 2 1