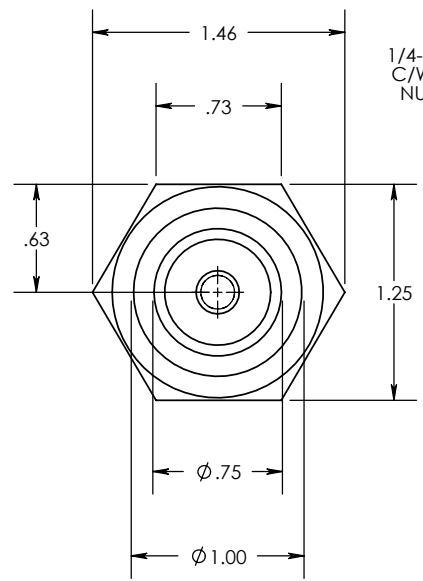


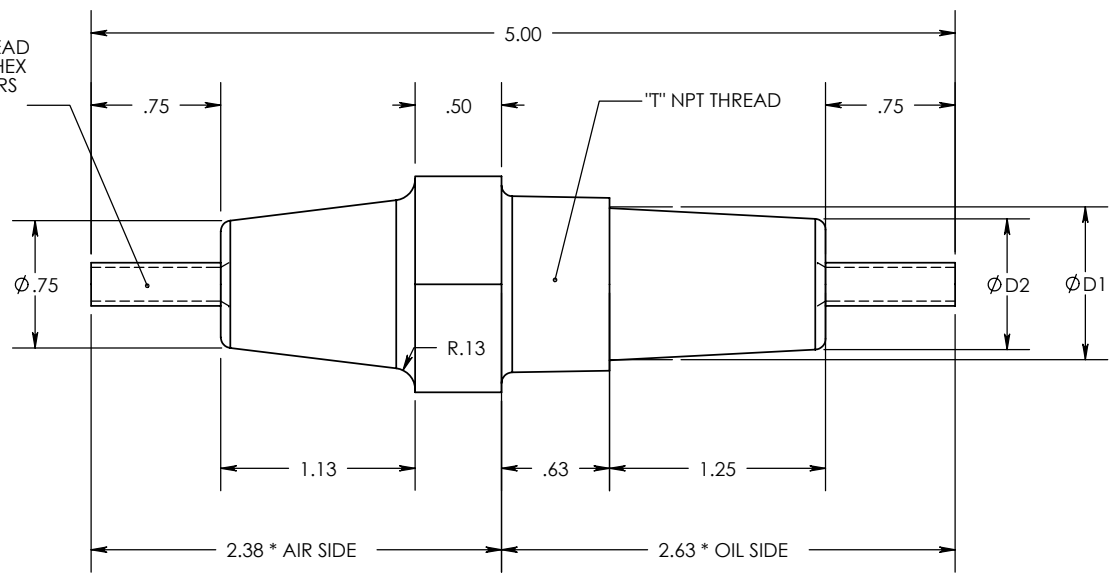
8 7 6 5 4 3 2 1

REV. 3
 THE INFORMATION CONTAINED IN THIS DRAWING IS THE SOLE PROPERTY OF ENGINEERED POWER COMPONENTS LTD. ANY REPRODUCTION IN PART OR WHOLE WITHOUT THE WRITTEN PERMISSION OF ENGINEERED POWER COMPONENTS LTD. IS PROHIBITED.

CAD FILE: 900 SERIES
 DWG. NO. 09-004-001



1/4-20 UNC THREAD
 C/W (2) BRASS HEX
 NUTS & WASHERS
 (EACH END)



- NOTES:
 1. ALL UNSPECIFIED RADII TO BE R0.063
 2. ALL CONTACT SURFACES TO BE CLEAN & FREE FROM FLASH
 3. POSITIVE OIL SEAL PROVIDED BY TAPERED THREAD ON THREAD CONTACT

- MATERIAL:
 1. E04 - CYCLOALIPHATIC EPOXY, GREY
 2. BRASS

- SPECIFICATIONS:
 1. BASIC IMPULSE LEVEL 45KV
 2. MAXIMUM CURRENT RATING 50 AMPS
 3. TEMPERATURE CLASSIFICATION -50°C TO 155°C

PRODUCT SELECTION GUIDE

STYLE	DIMENSIONS			PART NUMBERS
	"D1"	"D2"	"T"	
1/2 NPT	0.63	0.56	1/2	09-004-001 3A E04
3/4 NPT	0.88	0.75	3/4	09-004-002 3A E04

REF.	0	1	2	3
C1				
A6				
B4				
C3				

UNLESS OTHERWISE SPECIFIED
 DIMENSIONS ARE IN INCHES.
 TOLERANCES ARE:
 ONE PLACE MM ±0.50
 TWO PLACE MM ±0.25
 TWO PLACE DEC. ±0.020
 THREE PLACE DEC. ±0.010
 ANGLES 1°
 TEMPERATURE ±5°C
 VOLTAGE ±5%
 AMPERAGE ±5%
 RESISTANCE ±5%

CAD GENERATED DRAWING,
 DO NOT MANUALLY UPDATE.
 APPROVALS DATE
 DRAWN BY: DB 06/17/1999
 CHECKED BY:
 ENGINEERING

900 SERIES - 2.5kV
 CORE GROUND
 BUSHING

* STATISTICAL DIMENSION
 NO. OF SAMPLES [2]
 TOOLING REF. T09-004
 PRODUCT GROUP 900 SERIES

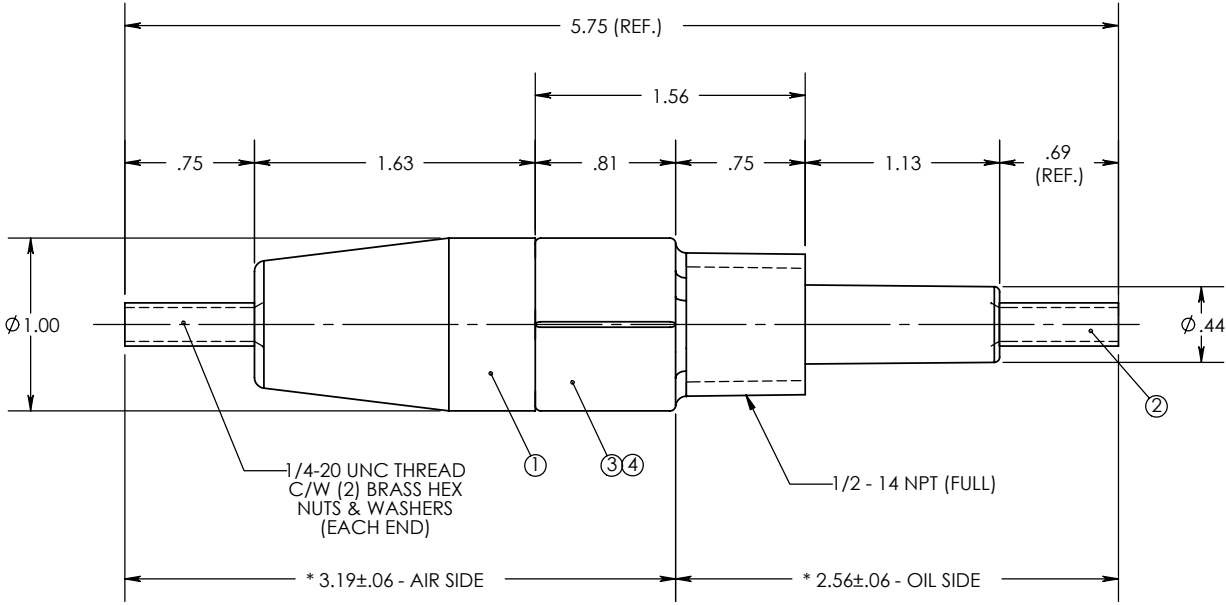
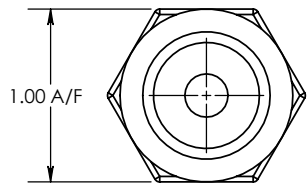
SIZE A	DWG. NO. 09-004-001	REV. 3
SCALE: 1:1	CAD FILE: 900 SERIES	SHEET 1 OF 1

8 7 6 5 4 3 2 1

8 7 6 5 4 3 2 1

REV. 0
 THE INFORMATION CONTAINED IN THIS DRAWING IS THE SOLE PROPERTY OF ENGINEERED POWER COMPONENTS LTD. ANY REPRODUCTION IN PART OR WHOLE WITHOUT THE WRITTEN PERMISSION OF ENGINEERED POWER COMPONENTS LTD. IS PROHIBITED.

CAD FILE: 900 SERIES
 DWG. NO. 09-015-000



1/4-20 UNC THREAD
 C/W (2) BRASS HEX
 NUTS & WASHERS
 (EACH END)

1/2 - 14 NPT (FULL)

* 3.19±.06 - AIR SIDE

* 2.56±.06 - OIL SIDE

NOTES:
 1. ALL UNSPECIFIED RADII TO BE R0.063
 2. ALL CONTACT SURFACES TO BE CLEAN & FREE FROM FLASH
 3. POSITIVE OIL SEAL PROVIDED BY TAPERED THREAD ON THREAD CONTACT

MATERIAL:
 1. E04 - CYCLOALIPHATIC EPOXY, GREY
 2. BRASS CONDUCTOR
 3. MILD STEEL FITTING, ZINC PLATED

SPECIFICATIONS:
 1. BASIC IMPULSE LEVEL 45KV
 2. MAXIMUM CURRENT RATING 50 AMPS
 3. TEMPERATURE CLASSIFICATION -50°C TO 155°C

ITEM NO.	QTY.	PART NO.	DESCRIPTION
1	1	09-015	BUSHING, EPOXY
2	1	09-015-000 A01	CONDUCTOR, BRASS
3	1	09-015-000 A02	1/2-14 NPT CONNECTOR, STEEL
4	1	09-015-000 A03	O-RING, NBR70A

REVISIONS

REV.	DESCRIPTION
0	

UNLESS OTHERWISE SPECIFIED
 DIMENSIONS ARE IN INCHES.
 TOLERANCES ARE:
 ONE PLACE MM ±0.50
 TWO PLACE MM ±0.25
 TWO PLACE DEC. ±0.020
 THREE PLACE DEC. ±0.010
 ANGLES 1°
 TEMPERATURE ±5°C
 VOLTAGE ±5%
 AMPERAGE ±5%
 RESISTANCE ±5%

CAD GENERATED DRAWING,
 DO NOT MANUALLY UPDATE.

APPROVALS	DATE
DRAWN BY: DB	11/17/2001
CHECKED BY:	
ENGINEERING	



900 SERIES - 2.5kV
 CORE GROUND
 BUSHING

REF.

* STATISTICAL DIMENSION
 NO. OF SAMPLES [0]

TOOLING REF. T09-015
 PRODUCT GROUP 900 SERIES

SIZE A	DWG. NO. 09-015-000	REV. 0
SCALE: 1:1	CAD FILE: 900 SERIES	SHEET 1 OF 1

8 7 6 5 4 3 2 1