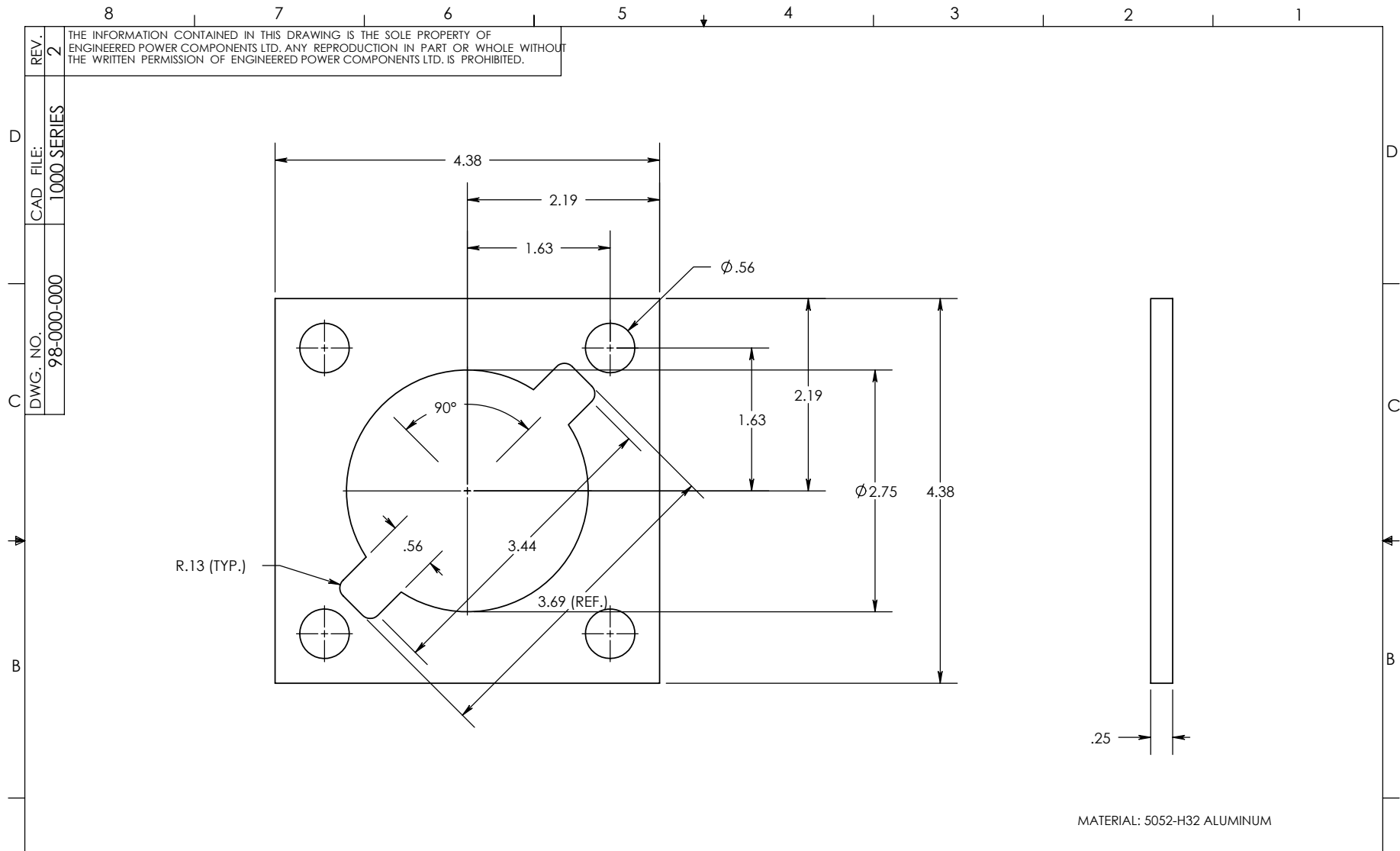




| <u>Bushing Series</u> | <u>Clamp No.</u> |
|---|--|
| 1. <i>900 Series Multi Stud Bushings</i> | 98-000-003 98-000-004 98-000-005 |
| 2. <i>1001 Series LV Transformer Bushings</i> | 98-000-014 98-000-018 98-000-022 |
| 3. <i>1002 Series LV Transformer Bushings</i> | 98-000-000 98-000-007 |
| 4. <i>1003 Series LV Transformer Bushings</i> | 98-000-016 |
| 5. <i>1004 Series LV Transformer Bushings</i> | 98-000-002 98-000-017 98-000-020 |
| 6. <i>1005 Series LV Transformer Bushings</i> | 98-000-010 98-000-013 |
| 7. <i>1011 Series LV Transformer Bushings</i> | 98-000-011 |
| 8. <i>1012 Series LV Transformer Bushings</i> | 98-000-012 |
| 9. <i>1050 Series LV Transformer Bushings</i> | 98-000-015 98-000-017 |
| 10. <i>1200 Series Apparatus Bushings</i> | 98-000-021 |




| | |
|-----------|-------------|
| REV. | 2 |
| DWG. NO. | 98-000-000 |
| CAD FILE: | 1000 SERIES |

THE INFORMATION CONTAINED IN THIS DRAWING IS THE SOLE PROPERTY OF ENGINEERED POWER COMPONENTS LTD. ANY REPRODUCTION IN PART OR WHOLE WITHOUT THE WRITTEN PERMISSION OF ENGINEERED POWER COMPONENTS LTD. IS PROHIBITED.

| | | | | | | | |
|-----------|--|---|--|---|---|---|--|
| REF. | | | | | | | |
| REVISIONS | <table border="1"> <tr> <td>0</td> <td></td> </tr> <tr> <td>1</td> <td>Ø.56 HOLE WAS Ø.50 MODIFIED SPARE CUT-OUT RM 02-08-2002 DB 02-08-2002</td> </tr> <tr> <td>2</td> <td>MATERIAL WAS 6061 ALUMINUM RM 04-12-2002 DB 04-12-2002</td> </tr> </table> | 0 | | 1 | Ø.56 HOLE WAS Ø.50 MODIFIED SPARE CUT-OUT RM 02-08-2002 DB 02-08-2002 | 2 | MATERIAL WAS 6061 ALUMINUM RM 04-12-2002 DB 04-12-2002 |
| 0 | | | | | | | |
| 1 | Ø.56 HOLE WAS Ø.50 MODIFIED SPARE CUT-OUT RM 02-08-2002 DB 02-08-2002 | | | | | | |
| 2 | MATERIAL WAS 6061 ALUMINUM RM 04-12-2002 DB 04-12-2002 | | | | | | |

| | |
|--|--------|
| UNLESS OTHERWISE SPECIFIED DIMENSIONS ARE IN INCHES. TOLERANCES ARE: | |
| ONE PLACE MM | ±0.50 |
| TWO PLACE MM | ±0.25 |
| TWO PLACE DEC. | ±0.020 |
| THREE PLACE DEC. | ±0.010 |
| ANGLES | 1° |
| TEMPERATURE | ±5 °C |
| VOLTAGE | ±5 % |
| AMPERAGE | ±5 % |
| RESISTANCE | ±5 % |
| * STATISTICAL DIMENSION NO. OF SAMPLES [0] | |

| | |
|--|------------|
| CAD GENERATED DRAWING, DO NOT MANUALLY UPDATE. | |
| APPROVALS | DATE |
| DRAWN BY: DB | 03/06/1999 |
| CHECKED BY: RM | 03/06/1999 |
| ENGINEERING DB | 03/06/1999 |
| TOOLING REF. | N/A |
| PRODUCT GROUP | CLAMP |



1002 SERIES
LV BUSHING
CLAMP

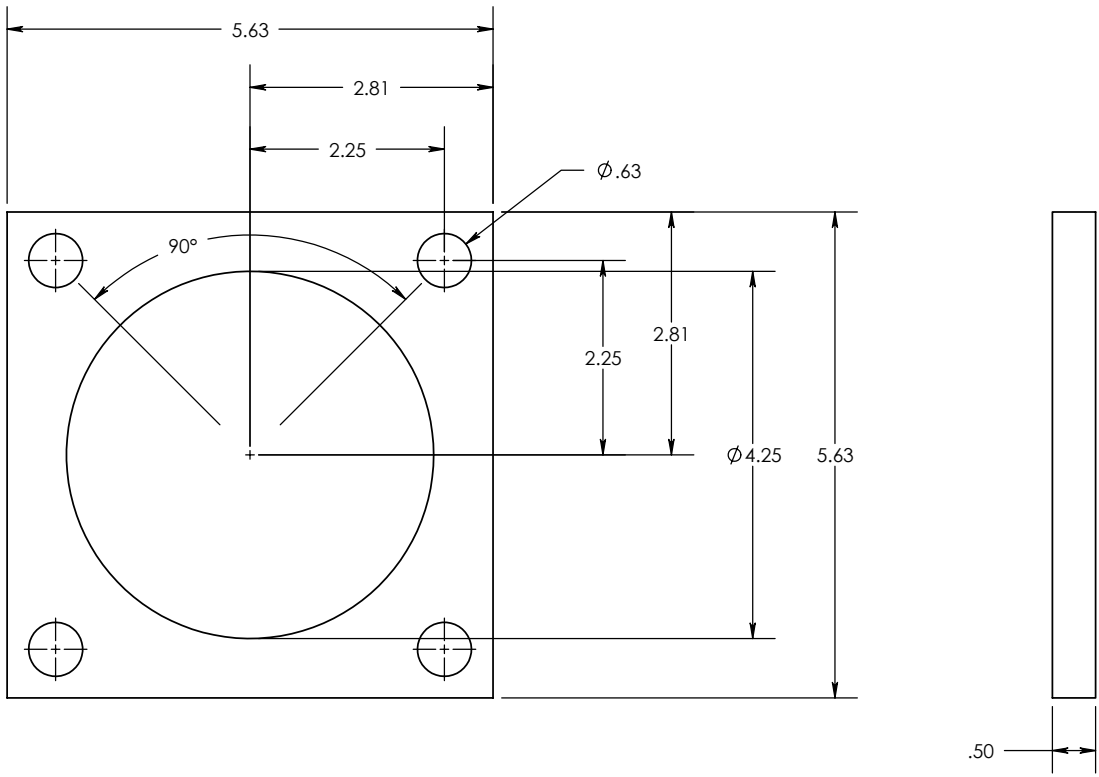
| | | |
|------------------------------------|---------------------|--------------|
| SIZE A | DWG. NO. 98-000-000 | REV. 2 |
| SCALE: 1:1.5 CAD FILE: 1000 SERIES | | SHEET 1 OF 1 |

MATERIAL: 5052-H32 ALUMINUM

8 7 6 5 4 3 2 1

REV. 1
 THE INFORMATION CONTAINED IN THIS DRAWING IS THE SOLE PROPERTY OF
 ENGINEERED POWER COMPONENTS LTD. ANY REPRODUCTION IN PART OR WHOLE WITHOUT
 THE WRITTEN PERMISSION OF ENGINEERED POWER COMPONENTS LTD. IS PROHIBITED.

DWG. NO. 98-000-002
 CAD FILE: 1000 SERIES



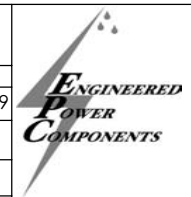
MATERIAL: 6061 ALUMINUM

0 1

REVISIONS
 Ø.63 M/G. HOLES
 WERE Ø.50
 DB 06-14-2000

UNLESS OTHERWISE SPECIFIED
 DIMENSIONS ARE IN INCHES.
 TOLERANCES ARE:
 ONE PLACE MM ±0.50
 TWO PLACE MM ±0.25
 TWO PLACE DEC. ±0.020
 THREE PLACE DEC. ±0.010
 ANGLES 1°
 TEMPERATURE ±5°C
 VOLTAGE ±5%
 AMPERAGE ±5%
 RESISTANCE ±5%

CAD GENERATED DRAWING,
 DO NOT MANUALLY UPDATE.
 APPROVALS DATE
 DRAWN BY: DB 04/06/1999
 CHECKED BY:
 ENGINEERING



1004 SERIES
 LV BUSHING
 CLAMP

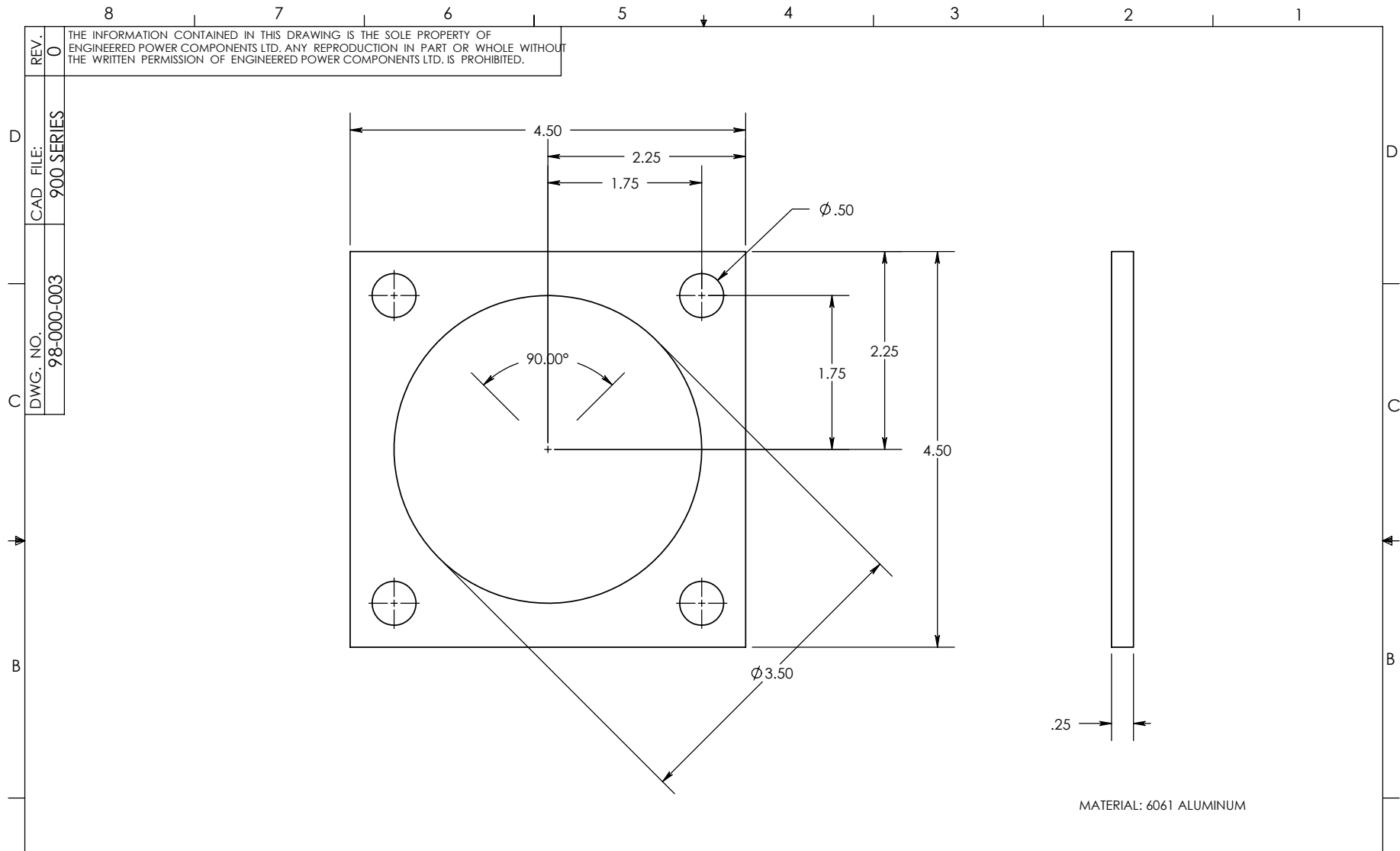
REF.


* STATISTICAL DIMENSION
 NO. OF SAMPLES [0]

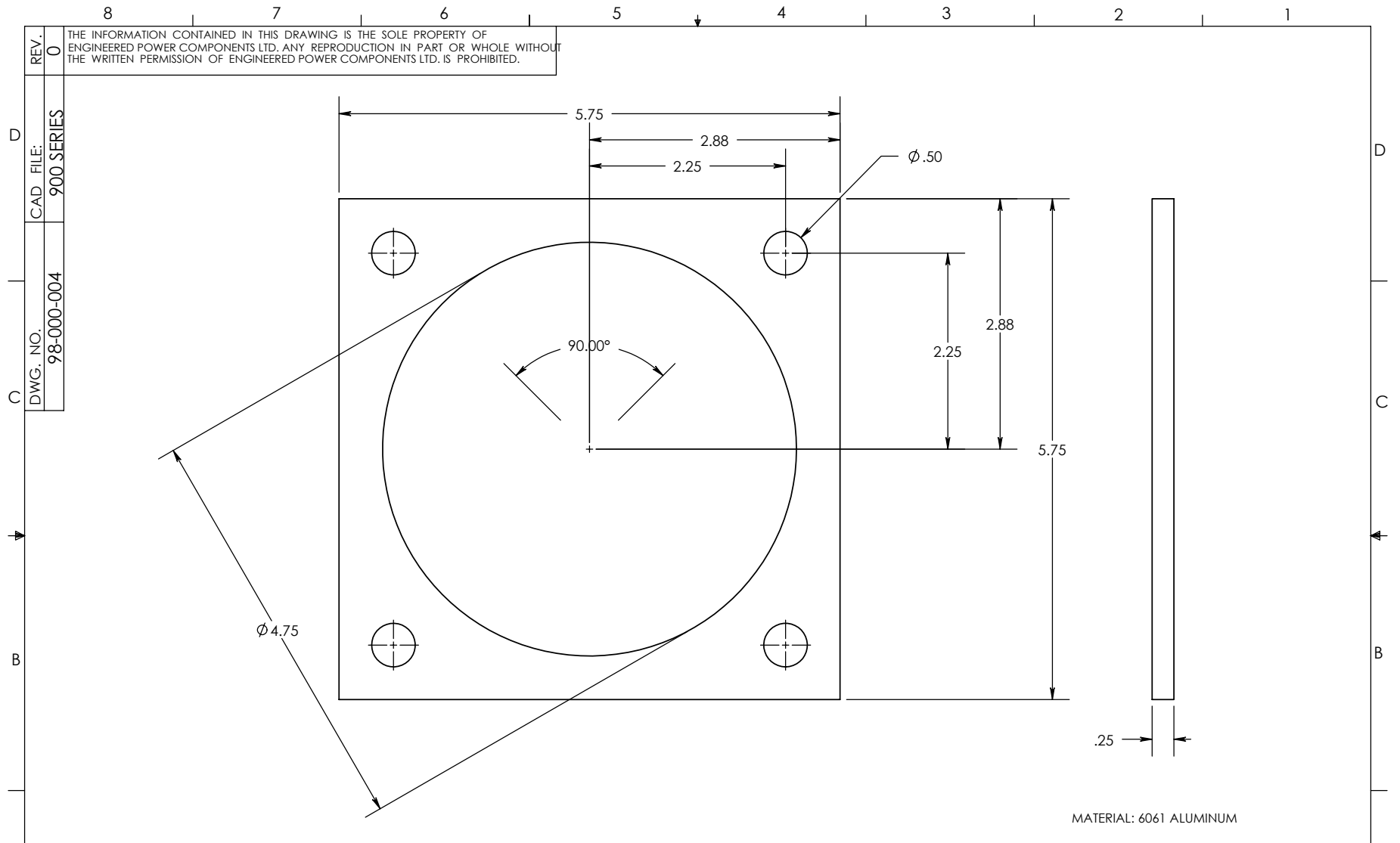
TOOLING REF. N/A
 PRODUCT GROUP CLAMP

SIZE A DWG. NO. 98-000-002 REV. 1
 SCALE: 2 CAD FILE: 1000 SERIES SHEET 1 OF 1

8 7 6 5 4 3 2 1



| | | | | | |
|---|-----------|---|--|--|---|
| A | REVISIONS | 0 | UNLESS OTHERWISE SPECIFIED DIMENSIONS ARE IN INCHES. TOLERANCES ARE: ONE PLACE MM ±0.50 TWO PLACE MM ±0.25 TWO PLACE DEC. ±0.020 THREE PLACE DEC. ±0.010 ANGLES 1° TEMPERATURE ±5°C VOLTAGE ±5% AMPERAGE ±5% RESISTANCE ±5% | CAD GENERATED DRAWING, DO NOT MANUALLY UPDATE. APPROVALS: _____ DATE: _____ DRAWN BY: DB 06/04/19 CHECKED BY: _____ ENGINEERING: _____ |  7 & 9 STUD CLAMP |
| | REF. | | | | |



| | |
|-----------|------------|
| REV. | 0 |
| CAD FILE: | 900.SERIES |
| DWG. NO. | 98-000-004 |

THE INFORMATION CONTAINED IN THIS DRAWING IS THE SOLE PROPERTY OF ENGINEERED POWER COMPONENTS LTD. ANY REPRODUCTION IN PART OR WHOLE WITHOUT THE WRITTEN PERMISSION OF ENGINEERED POWER COMPONENTS LTD. IS PROHIBITED.

| | |
|-----------|---|
| REVISIONS | 0 |
| REF. | |

UNLESS OTHERWISE SPECIFIED DIMENSIONS ARE IN INCHES. TOLERANCES ARE:

| | |
|------------------|--------|
| ONE PLACE MM | ±0.50 |
| TWO PLACE MM | ±0.25 |
| TWO PLACE DEC. | ±0.020 |
| THREE PLACE DEC. | ±0.010 |
| ANGLES | 1° |
| TEMPERATURE | ±5 °C |
| VOLTAGE | ±5 % |
| AMPERAGE | ±5 % |
| RESISTANCE | ±5 % |

* STATISTICAL DIMENSION
NO. OF SAMPLES [0]

| | |
|--|----------|
| CAD GENERATED DRAWING, DO NOT MANUALLY UPDATE. | |
| APPROVALS | DATE |
| DRAWN BY: DB | 06/04/19 |
| CHECKED BY: | |
| ENGINEERING | |
| TOOLING REF. | N/A |
| PRODUCT GROUP | CLAMP |

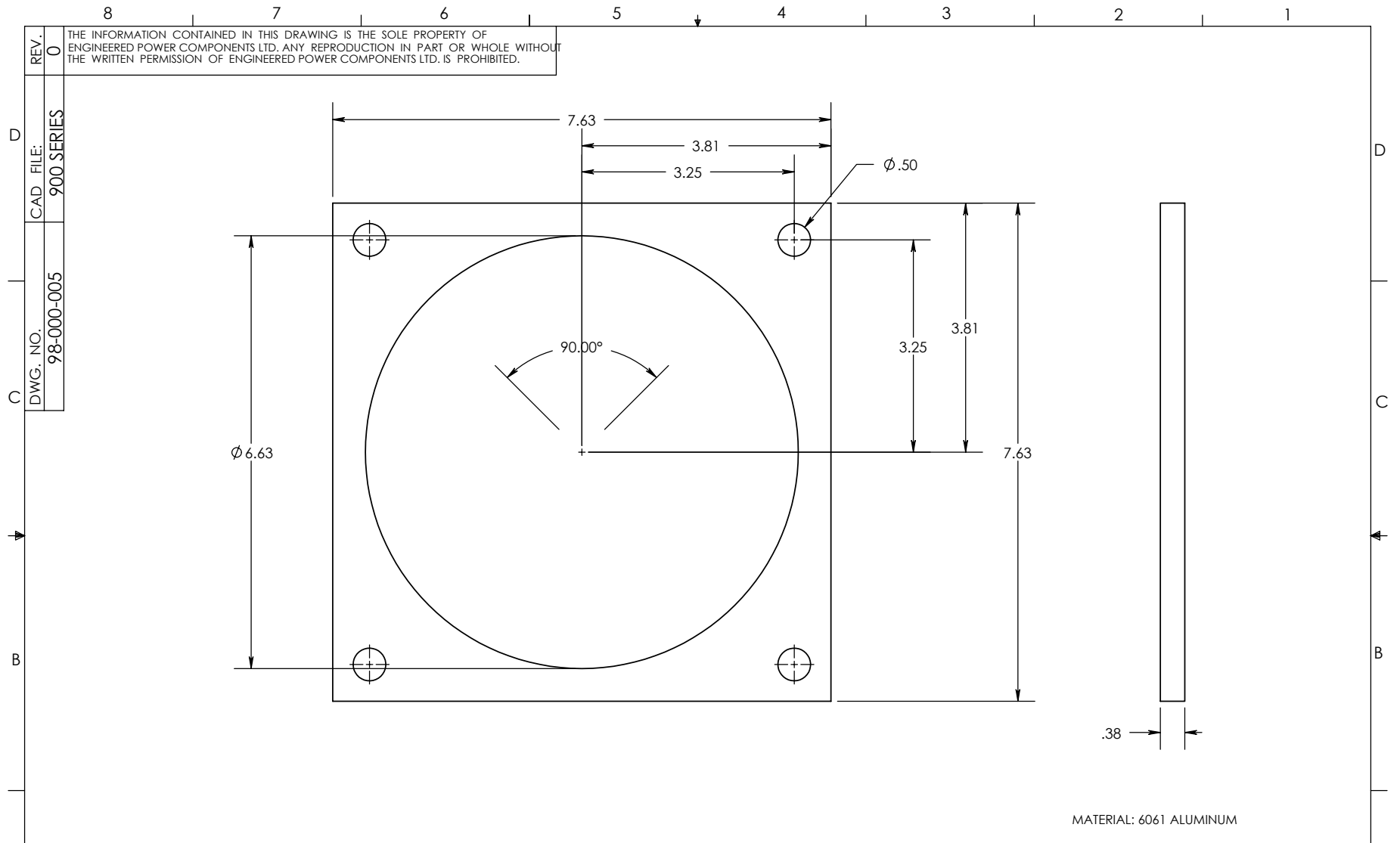
ENGINEERED POWER COMPONENTS

19 STUD CLAMP

SIZE A DWG. NO. 98-000-004 REV. 0

SCALE: 1:1.5 CAD FILE: 900.SERIES SHEET 1 OF 1


MATERIAL: 6061 ALUMINUM



| | |
|-----------|------------|
| REV. | 0 |
| CAD FILE: | 900 SERIES |
| DWG. NO. | 98-000-005 |

THE INFORMATION CONTAINED IN THIS DRAWING IS THE SOLE PROPERTY OF ENGINEERED POWER COMPONENTS LTD. ANY REPRODUCTION IN PART OR WHOLE WITHOUT THE WRITTEN PERMISSION OF ENGINEERED POWER COMPONENTS LTD. IS PROHIBITED.

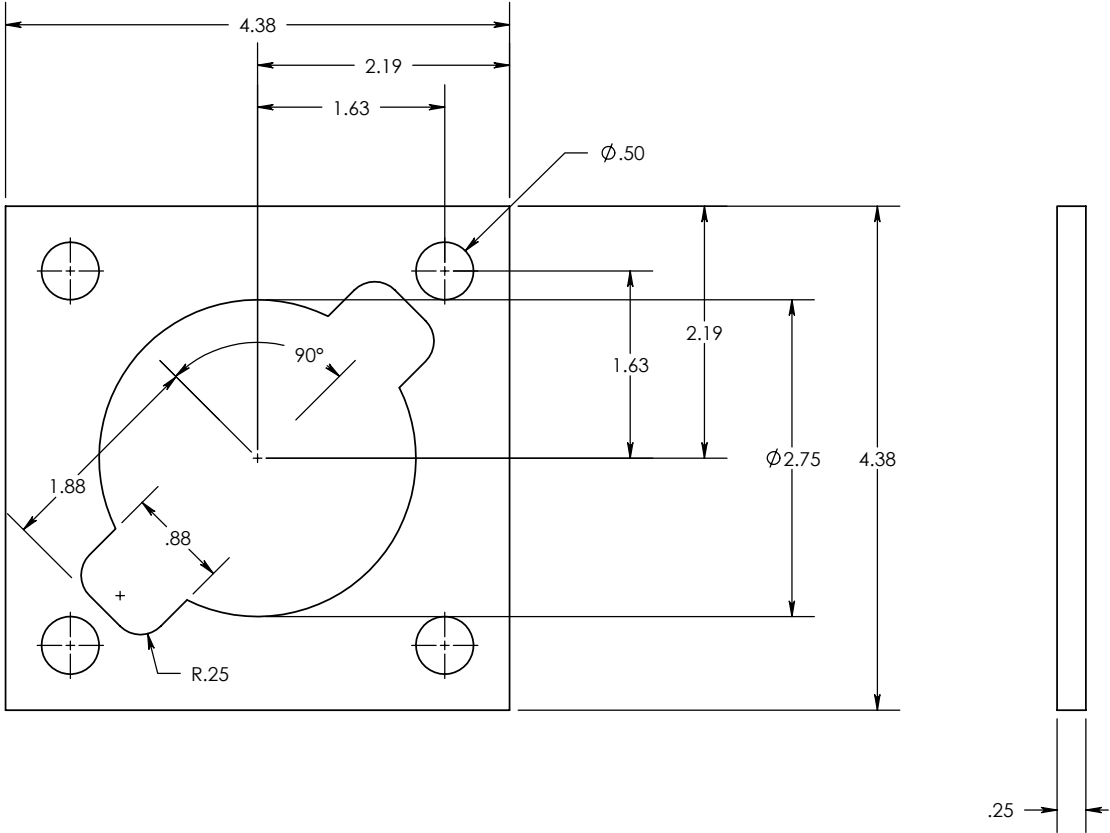
MATERIAL: 6061 ALUMINUM

| | | | | | | |
|---|-----------|---|--|--|---|---|
| A | REVISIONS | 0 | UNLESS OTHERWISE SPECIFIED DIMENSIONS ARE IN INCHES. TOLERANCES ARE: ONE PLACE MM ±0.50 TWO PLACE MM ±0.25 TWO PLACE DEC. ±0.020 THREE PLACE DEC. ±0.010 ANGLES 1° TEMPERATURE ±5°C VOLTAGE ±5% AMPERAGE ±5% RESISTANCE ±5% | CAD GENERATED DRAWING, DO NOT MANUALLY UPDATE. APPROVALS: _____ DATE: _____ DRAWN BY: DB 06/04/19 CHECKED BY: _____ ENGINEERING: _____ |  37 STUD CLAMP | A |
| | REF. | | | | | |

8 7 6 5 4 3 2 1

REV. 0
 THE INFORMATION CONTAINED IN THIS DRAWING IS THE SOLE PROPERTY OF
 ENGINEERED POWER COMPONENTS LTD. ANY REPRODUCTION IN PART OR WHOLE WITHOUT
 THE WRITTEN PERMISSION OF ENGINEERED POWER COMPONENTS LTD. IS PROHIBITED.

DWG. NO. 98-000-007
 CAD FILE: 1000 SERIES



MATERIAL: 6061 ALUMINUM

REVISIONS 0
 REF.

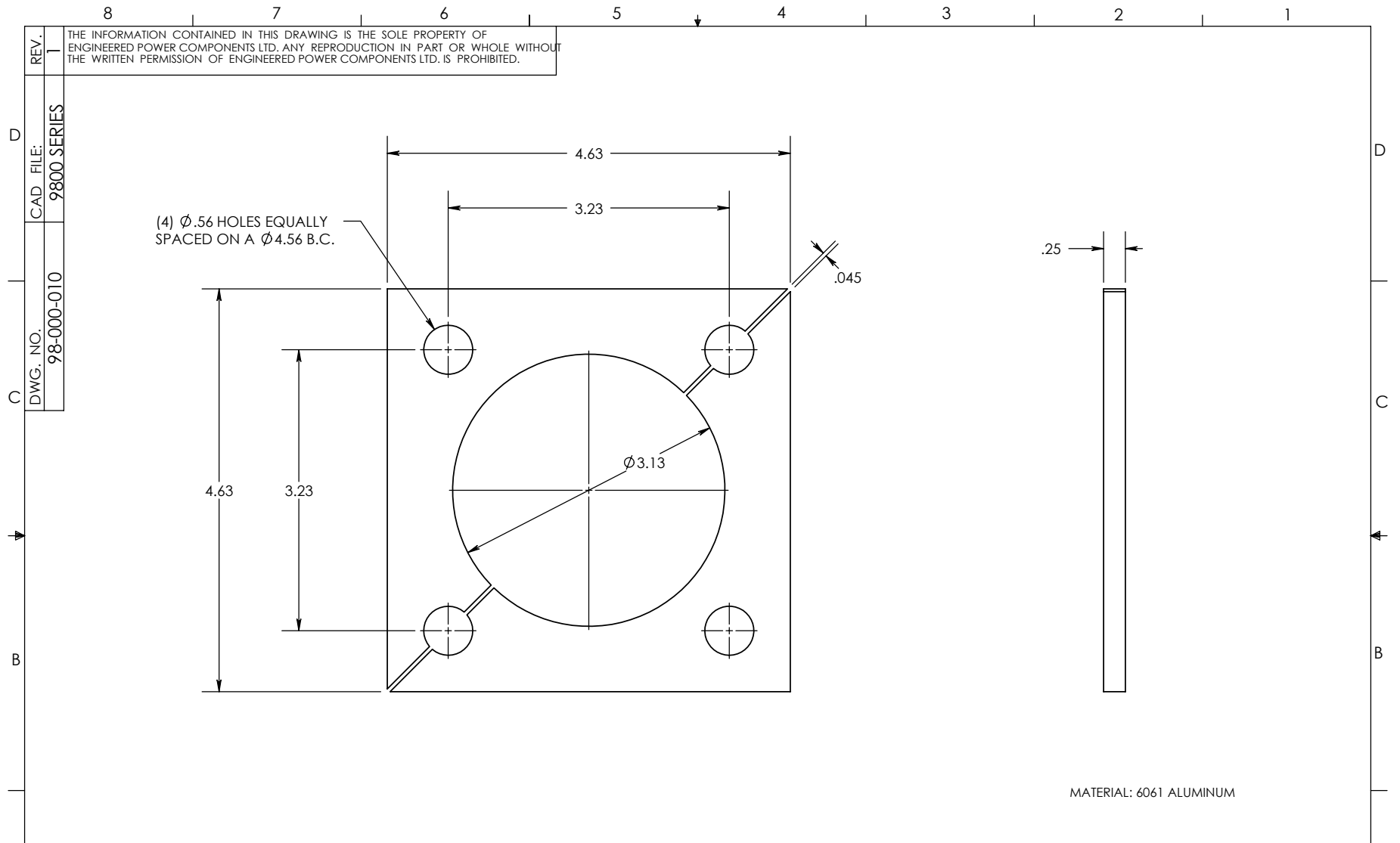
| | |
|---|--|
| 0 | |
|---|--|

UNLESS OTHERWISE SPECIFIED
 DIMENSIONS ARE IN INCHES.
 TOLERANCES ARE:
 ONE PLACE MM ±0.50
 TWO PLACE MM ±0.25
 TWO PLACE DEC. ±0.020
 THREE PLACE DEC. ±0.010
 ANGLES 1°
 TEMPERATURE ±5°C
 VOLTAGE ±5%
 AMPERAGE ±5%
 RESISTANCE ±5%
 * STATISTICAL DIMENSION
 NO. OF SAMPLES [0]

| | |
|---|----------|
| CAD GENERATED DRAWING, DO NOT MANUALLY UPDATE. | |
| APPROVALS | DATE |
| DRAWN BY: DB | 08/28/19 |
| CHECKED BY: | |
| ENGINEERING | |
| TOOLING REF. | N/A |
| PRODUCT GROUP | CLAMP |

| | |
|--------------|-----------------------|
| | 1002 SERIES |
| | LV BUSHING CLAMP |
| SIZE A | DWG. NO. 98-000-007 |
| SCALE: 1:1.5 | CAD FILE: 1000 SERIES |
| SHEET 1 | OF 1 |

8 7 6 5 4 3 2 1



REV. 1
 CAD FILE: 9800 SERIES
 DWG. NO. 98-000-010

THE INFORMATION CONTAINED IN THIS DRAWING IS THE SOLE PROPERTY OF ENGINEERED POWER COMPONENTS LTD. ANY REPRODUCTION IN PART OR WHOLE WITHOUT THE WRITTEN PERMISSION OF ENGINEERED POWER COMPONENTS LTD. IS PROHIBITED.

| | | |
|-----------|----|-----------------------------------|
| REVISIONS | 0 | 1 |
| | | .045 DIM WAS .06 DB 08-20-2001 |
| REF. | C4 | |

UNLESS OTHERWISE SPECIFIED DIMENSIONS ARE IN INCHES. TOLERANCES ARE:

| | |
|------------------|--------|
| ONE PLACE MM | ±0.50 |
| TWO PLACE MM | ±0.25 |
| TWO PLACE DEC. | ±0.020 |
| THREE PLACE DEC. | ±0.010 |
| ANGLES | 1° |
| TEMPERATURE | ±5°C |
| VOLTAGE | ±5% |
| AMPERAGE | ±5% |
| RESISTANCE | ±5% |

* STATISTICAL DIMENSION
 NO. OF SAMPLES [0]

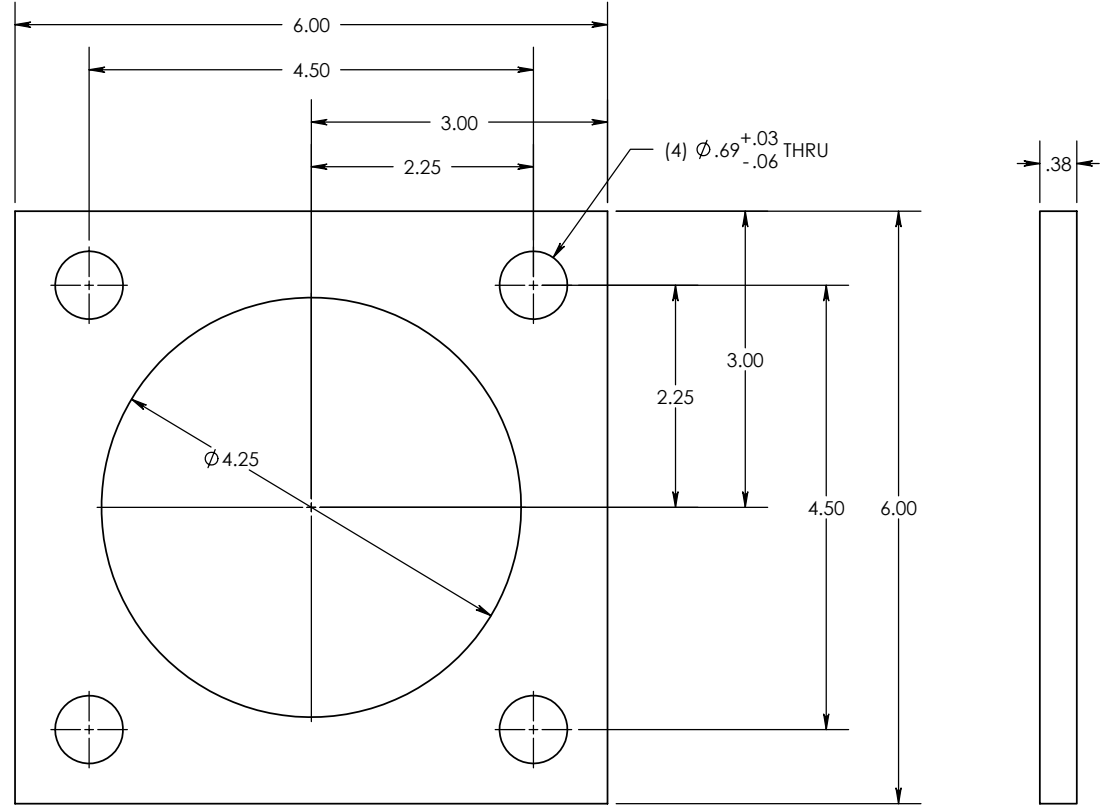
| | |
|--|-------------|
| CAD GENERATED DRAWING, DO NOT MANUALLY UPDATE. | |
| APPROVALS | DATE |
| DRAWN BY: DB | 02/14/2000 |
| CHECKED BY: | |
| ENGINEERING | |
| TOOLING REF. | N/A |
| PRODUCT GROUP | 9800 SERIES |

| | |
|--------------|-----------------------|
| | 1005 SERIES |
| | LV BUSHING CLAMP |
| SIZE A | DWG. NO. 98-000-010 |
| SCALE: 1:1.5 | CAD FILE: 9800 SERIES |
| | SHEET 1 OF 1 |

8 7 6 5 4 3 2 1

REV. 1
 THE INFORMATION CONTAINED IN THIS DRAWING IS THE SOLE PROPERTY OF ENGINEERED POWER COMPONENTS LTD. ANY REPRODUCTION IN PART OR WHOLE WITHOUT THE WRITTEN PERMISSION OF ENGINEERED POWER COMPONENTS LTD. IS PROHIBITED.

DWG. NO. 98-000-011
 CAD FILE: 9800 series



MATERIAL: 304 STAINLESS STEEL

| | | |
|-----------|--|---|
| REVISIONS | 0 | 1 |
| | .69 HOLE WAS .63, REVISED GENERAL TOLERANCES. DB: 09-19-2000 | |
| REF. | | |

UNLESS OTHERWISE SPECIFIED DIMENSIONS ARE IN INCHES. TOLERANCES ARE:
 ONE PLACE MM ±1.00
 TWO PLACE MM ±0.50
 TWO PLACE DEC. ±0.040
 THREE PLACE DEC. ±0.020
 ANGLES 1°
 TEMPERATURE ±5°C
 VOLTAGE ±5%
 AMPERAGE ±5%
 RESISTANCE ±5%

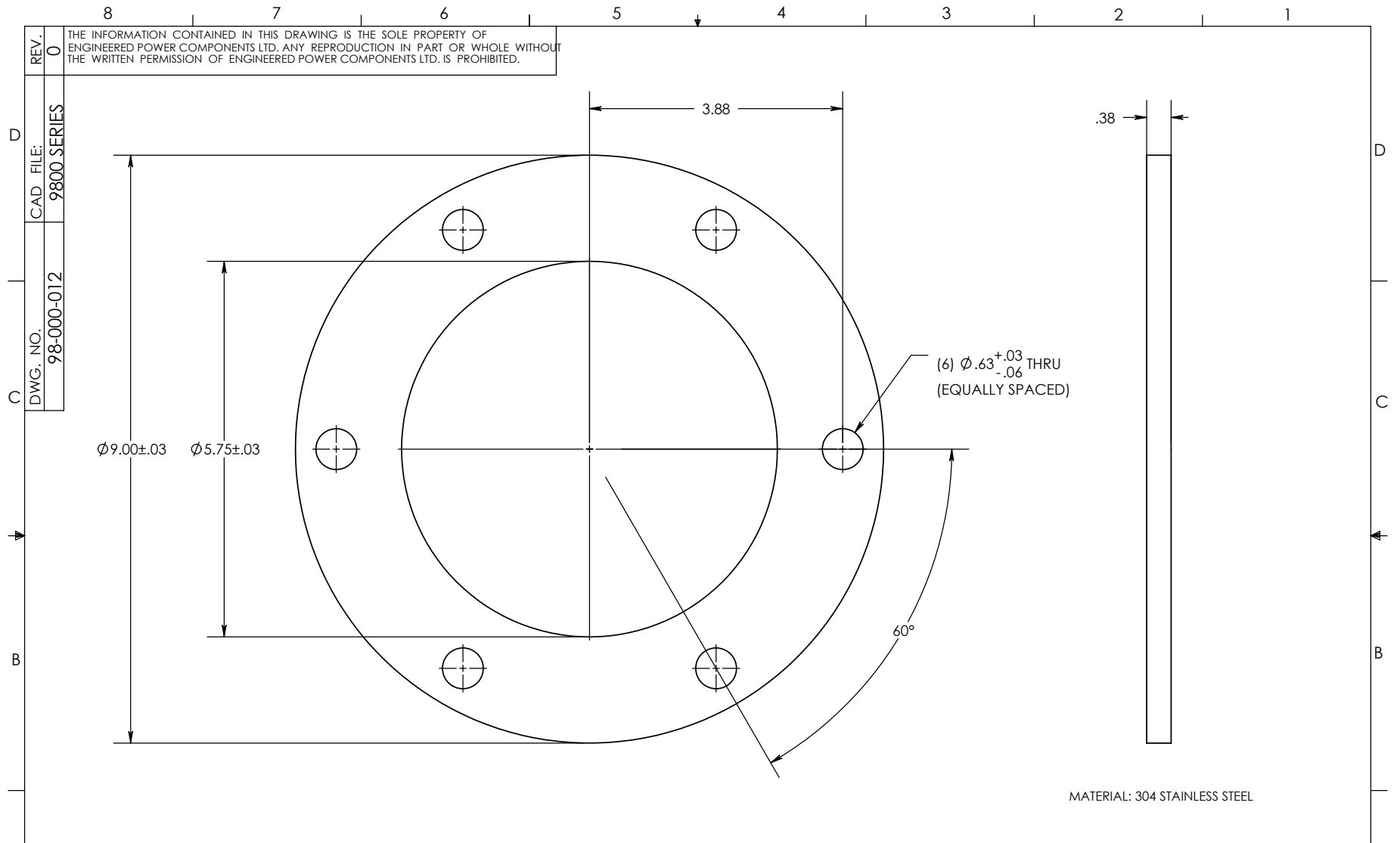
| | |
|--|------------|
| CAD GENERATED DRAWING, DO NOT MANUALLY UPDATE. | |
| APPROVALS | DATE |
| DRAWN BY: DB | 27/04/2000 |
| CHECKED BY: RM | 27/04/2000 |
| ENGINEERING DB | 27/04/2000 |
| TOOLING REF. | N/A |
| PRODUCT GROUP | CLAMP |

1011 SERIES
 LV BUSHING CLAMP
 (STAINLESS STEEL, PLASMA CUT)


* STATISTICAL DIMENSION
 NO. OF SAMPLES [0]

| | | |
|--------------|-----------------------|--------------|
| SIZE A | DWG. NO. 98-000-011 | REV. 1 |
| SCALE 1:1.75 | CAD FILE: 9800 series | SHEET 1 OF 1 |

8 7 6 5 4 3 2 1



MATERIAL: 304 STAINLESS STEEL

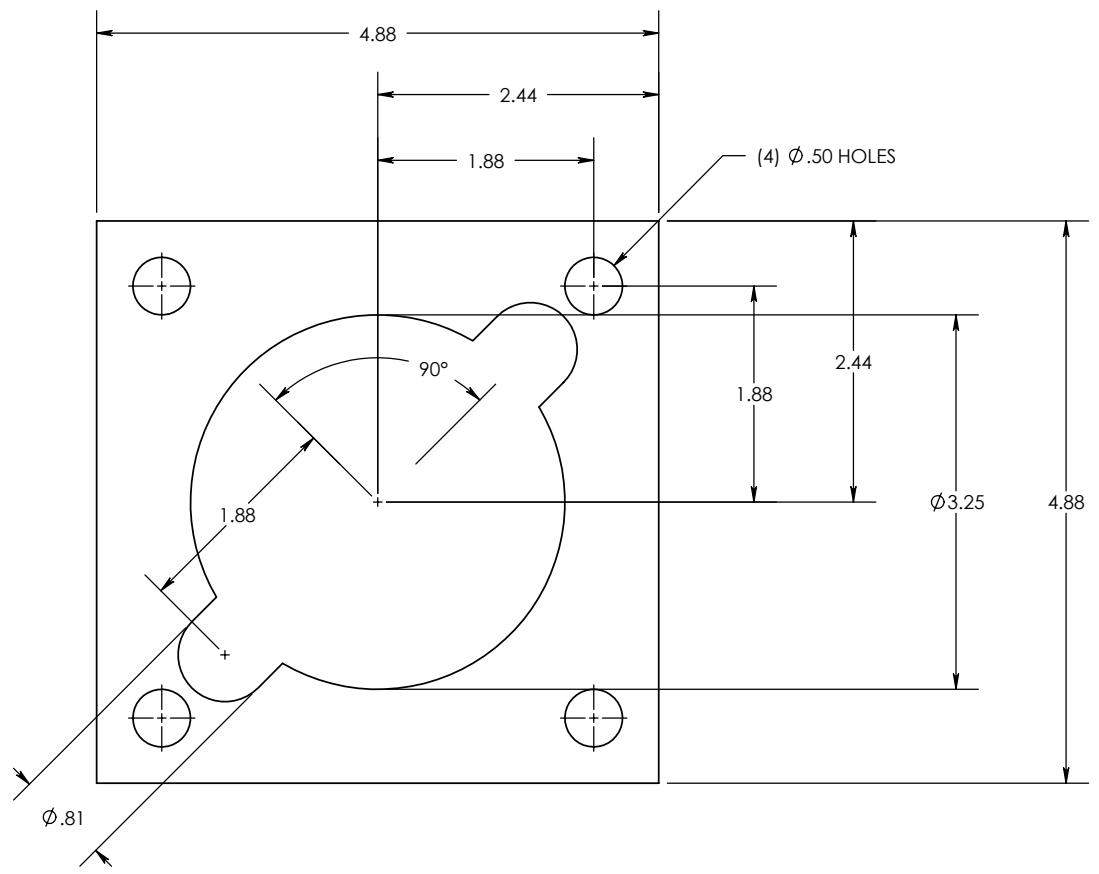
| | | | | | | | | |
|---|-----------|---|--|---|---|---|---|---|
| A | REVISIONS | 0 | UNLESS OTHERWISE SPECIFIED DIMENSIONS ARE IN INCHES. TOLERANCES ARE: ONE PLACE MM ±0.50 TWO PLACE MM ±0.25 TWO PLACE DEC. ±0.020 THREE PLACE DEC. ±0.010 ANGLES 1° TEMPERATURE ±5 °C VOLTAGE ±5 % AMPERAGE ±5 % RESISTANCE ±5 % | CAD GENERATED DRAWING, DO NOT MANUALLY UPDATE. | |  | 1012 SERIES LV BUSHING CLAMP | |
| | REF. | | | * STATISTICAL DIMENSION NO. OF SAMPLES [0] | APPROVALS DRAWN BY: DB 10/26/2000 CHECKED BY: ENGINEERING | | TOOLING REF. N/A PRODUCT GROUP CLAMP | SIZE A DWG. NO. 98-000-012 SCALE: 2 |

8 7 6 5 4 3 2 1

REV. 0
 THE INFORMATION CONTAINED IN THIS DRAWING IS THE SOLE PROPERTY OF
 ENGINEERED POWER COMPONENTS LTD. ANY REPRODUCTION IN PART OR WHOLE WITHOUT
 THE WRITTEN PERMISSION OF ENGINEERED POWER COMPONENTS LTD. IS PROHIBITED.

CAD FILE:
 9800 SERIES

DWG. NO.
 98-000-013



MATERIAL: 6061 ALUMINUM

REVISIONS 0

REF.

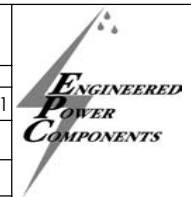
8 7 6 5 4 3 2 1

UNLESS OTHERWISE SPECIFIED
 DIMENSIONS ARE IN INCHES.
 TOLERANCES ARE:
 ONE PLACE MM ±0.50
 TWO PLACE MM ±0.25
 TWO PLACE DEC. ±0.020
 THREE PLACE DEC. ±0.010
 ANGLES 1°
 TEMPERATURE ±5°C
 VOLTAGE ±5%
 AMPERAGE ±5%
 RESISTANCE ±5%

* STATISTICAL DIMENSION
 NO. OF SAMPLES [0]

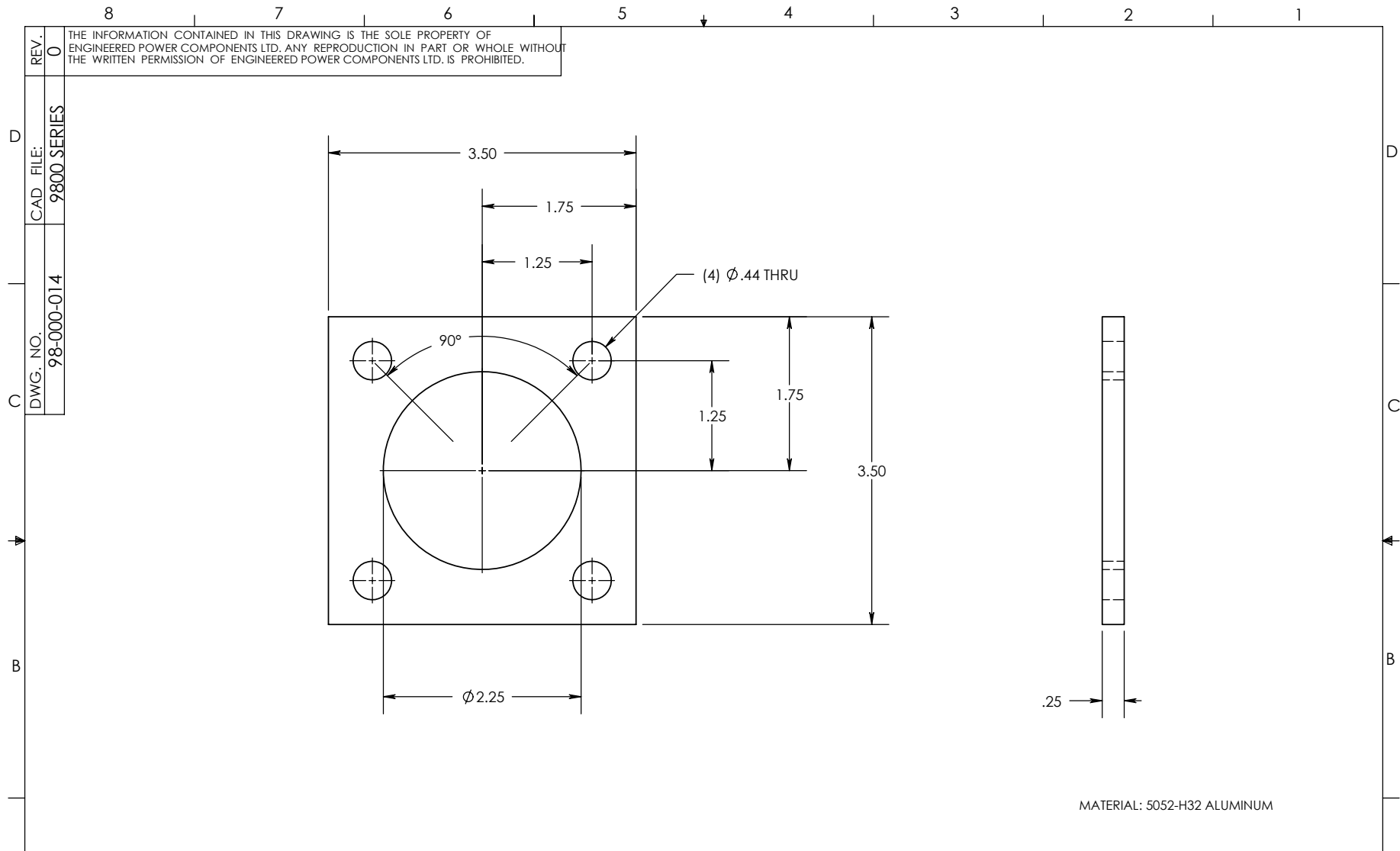
CAD GENERATED DRAWING,
 DO NOT MANUALLY UPDATE.

| | |
|---------------|------------|
| APPROVALS | DATE |
| DRAWN BY: DB | 04/24/2001 |
| CHECKED BY: | |
| ENGINEERING | |
| TOOLING REF. | N/A |
| PRODUCT GROUP | CLAMP |




1005 SERIES
 CUSTOM
 LV BUSHING
 CLAMP

| | | |
|------------|-----------------------|--------------|
| SIZE A | DWG. NO. 98-000-013 | REV. 0 |
| SCALE: 1:1 | CAD FILE: 9800 SERIES | SHEET 1 OF 1 |



MATERIAL: 5052-H32 ALUMINUM

| | | | | | | |
|---|-----------|---|--|---|---|--|
| A | REVISIONS | 0 | UNLESS OTHERWISE SPECIFIED DIMENSIONS ARE IN INCHES. TOLERANCES ARE: ONE PLACE MM ±0.50 TWO PLACE MM ±0.25 TWO PLACE DEC. ±0.020 THREE PLACE DEC. ±0.010 ANGLES 1° TEMPERATURE ±5 °C VOLTAGE ±5 % AMPERAGE ±5 % RESISTANCE ±5 % | CAD GENERATED DRAWING, DO NOT MANUALLY UPDATE. APPROVALS _____ DATE _____ DRAWN BY: DB 07/06/2001 CHECKED BY: _____ ENGINEERING _____ | |  1001 SERIES LV BUSHING CLAMP |
| | REF. | | | * STATISTICAL DIMENSION NO. OF SAMPLES [0] | TOOLING REF. N/A PRODUCT GROUP CLAMP | |

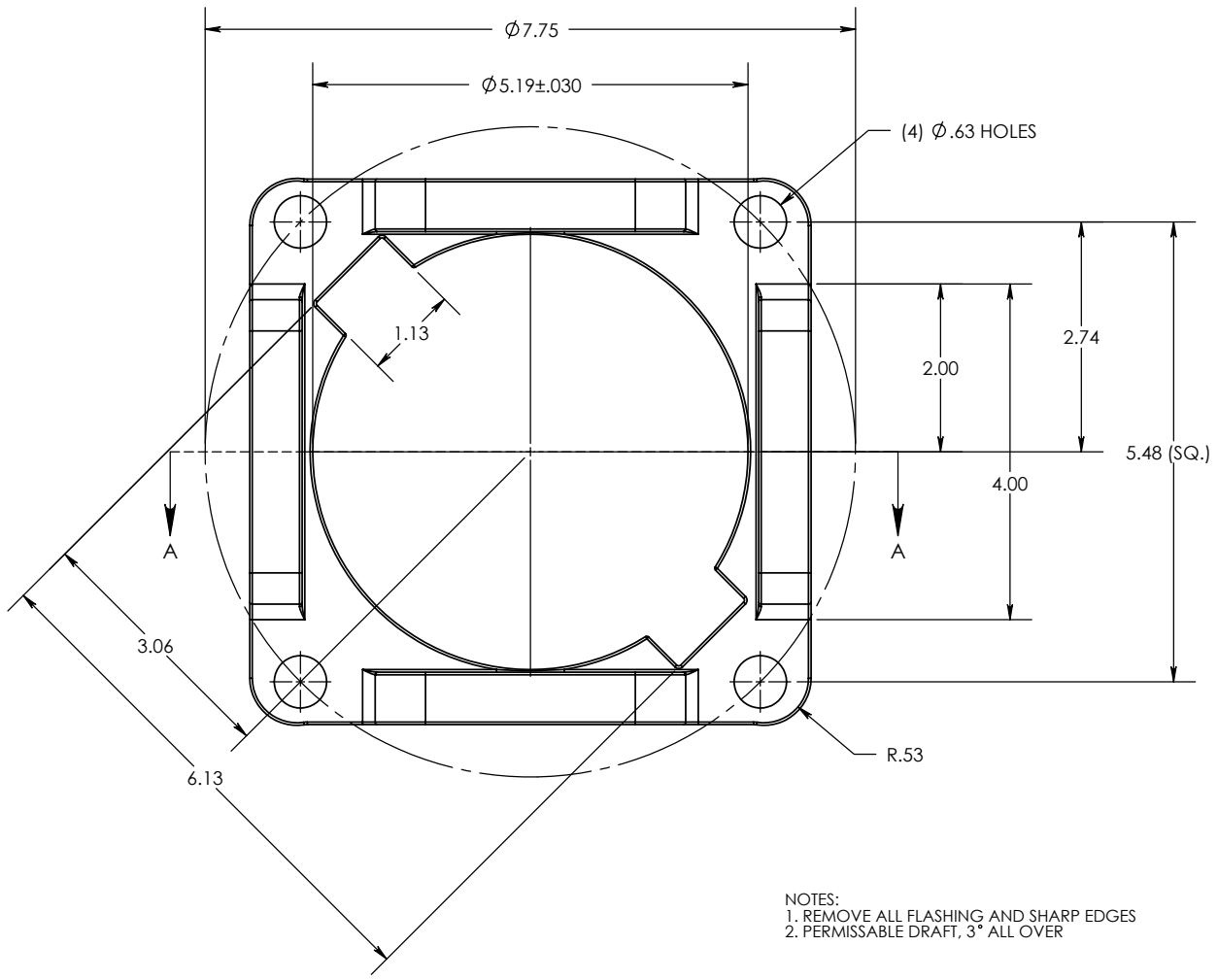
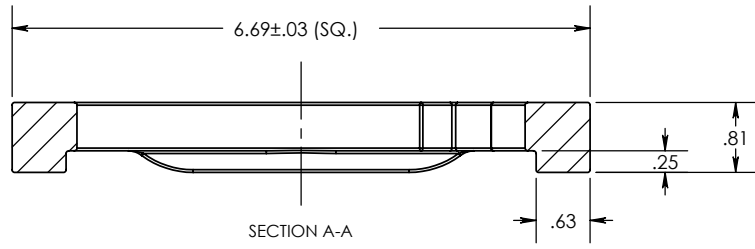
THE INFORMATION CONTAINED IN THIS DRAWING IS THE SOLE PROPERTY OF ENGINEERED POWER COMPONENTS LTD. ANY REPRODUCTION IN PART OR WHOLE WITHOUT THE WRITTEN PERMISSION OF ENGINEERED POWER COMPONENTS LTD. IS PROHIBITED.

REV. 0

CAD FILE: 9800 SERIES

DWG. NO. 98-000-014

| | | | | | | |
|----------|------------|-----------|-------------|------|-----------|---|
| DWG. NO. | 98-000-015 | CAD FILE: | 9800 SERIES | REF. | REVISIONS | 0 |
|----------|------------|-----------|-------------|------|-----------|---|



NOTES:
 1. REMOVE ALL FLASHING AND SHARP EDGES
 2. PERMISSABLE DRAFT, 3° ALL OVER

UNLESS OTHERWISE SPECIFIED DIMENSIONS ARE IN INCHES. TOLERANCES ARE:

ONE PLACE MM ±0.50
 TWO PLACE MM ±0.25
 TWO PLACE DEC. ±.020
 THREE PLACE DEC. ±.010
 ANGLES 1°

TEMPERATURE ±5°C
 VOLTAGE ±5%
 AMPERAGE ±5%
 RESISTANCE ±5%

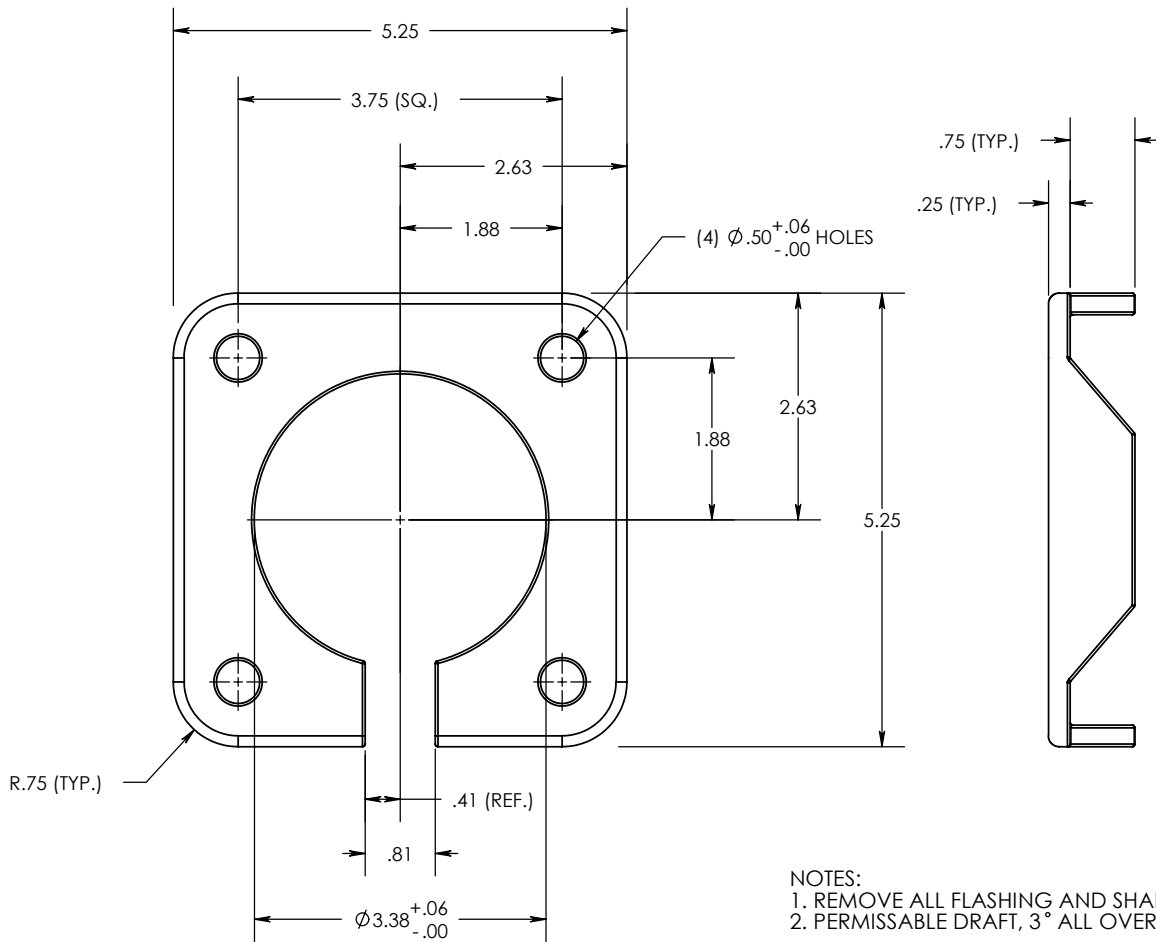
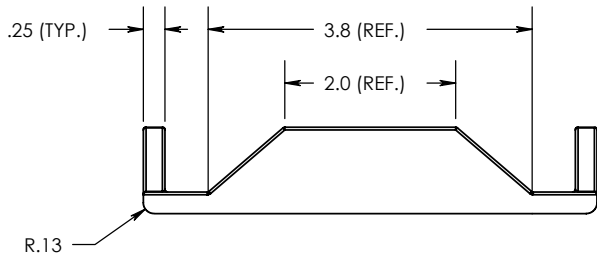
* STATISTICAL DIMENSION
 NO. OF SAMPLES [0]

| | |
|---|------------|
| CAD GENERATED DRAWING, DO NOT MANUALLY UPDATE. | |
| APPROVALS | DATE |
| DRAWN BY: DB | 15/11/2001 |
| CHECKED BY: RM | 08/01/2002 |
| ENGINEERING DB | 08/01/2002 |
| TOOLING REF. | N/A |
| PRODUCT GROUP | CLAMP |


SECONDARY BUSHING CLAMP
(A356.1 CAST ALUMINUM)

| | | |
|----------|-------------|--------|
| SIZE | DWG. NO. | REV. |
| A | 98-000-015 | 0 |
| SCALE | CAD FILE: | SHEET |
| 1:2 | 9800 SERIES | 1 OF 1 |

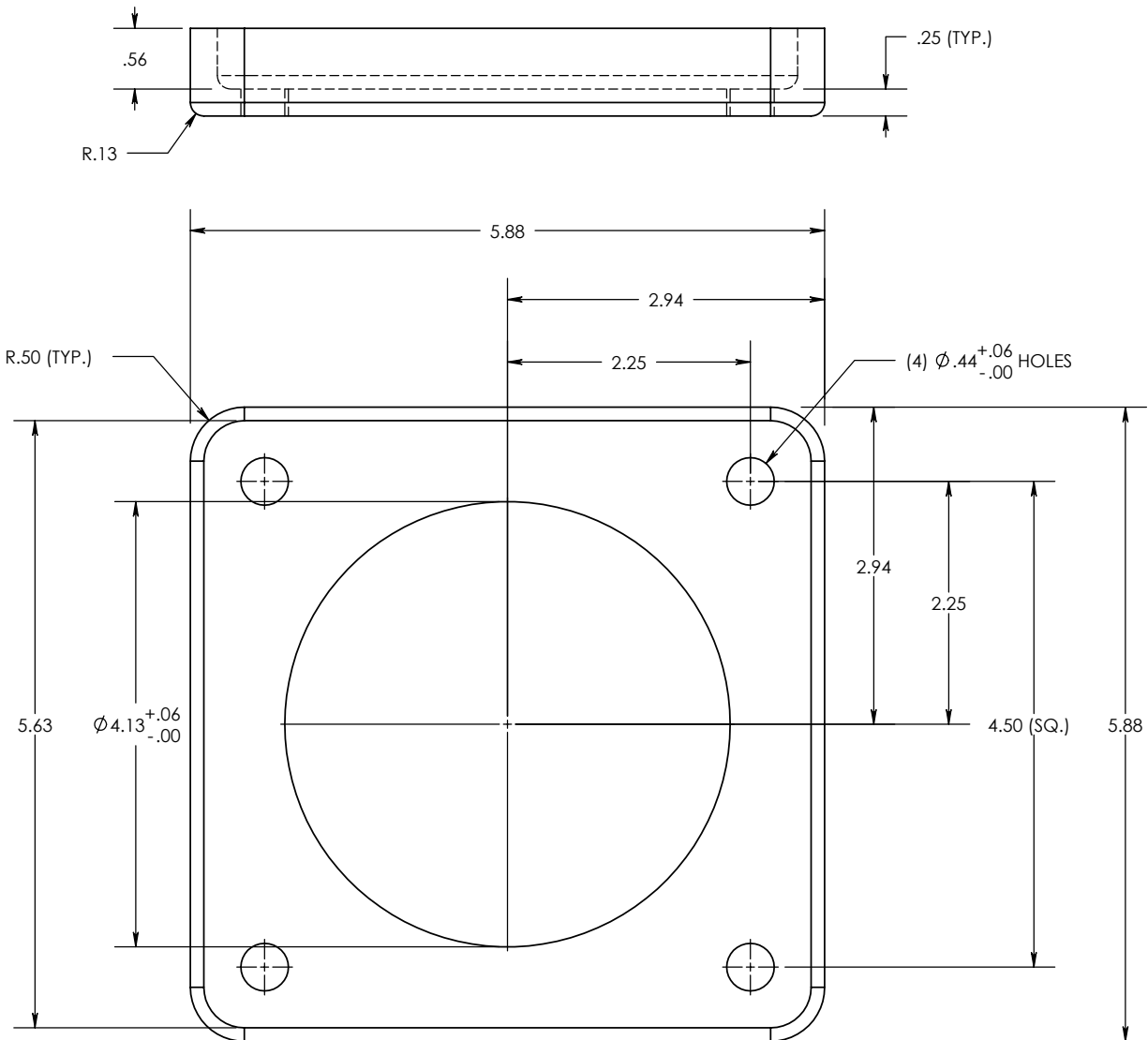
| | | | | | | |
|----------|------------|-----------|-------------|------|---|---|
| DWG. NO. | 98-000-016 | CAD FILE: | 9800 SERIES | REF. | REVISIONS | 0 |
| | | | | | .81 SLOT WAS .63, R.75 WAS R.50 RM 11/07/2002 DB 11/07/2002 | 1 |



NOTES:
 1. REMOVE ALL FLASHING AND SHARP EDGES
 2. PERMISSABLE DRAFT, 3° ALL OVER

| | | | | | | |
|--|--|-------------|---|---|------------|-----------------------|
| UNLESS OTHERWISE SPECIFIED DIMENSIONS ARE IN INCHES. TOLERANCES ARE: ONE PLACE MM ±1.00 TWO PLACE MM ±0.50 TWO PLACE DEC. ±.040 THREE PLACE DEC. ±.020 ANGLES 1° TEMPERATURE ±5°C VOLTAGE ±5% AMPERAGE ±5% RESISTANCE ±5% | CAD GENERATED DRAWING, DO NOT MANUALLY UPDATE. | |  | SECONDARY BUSHING CLAMP (A356.1 CAST ALUMINUM) | | |
| | APPROVALS | DATE | | | | |
| | DRAWN BY: DB | 14/11/2001 | | | | |
| | CHECKED BY: RM | 06/01/2002 | | | | |
| | ENGINEERING | DB | 06/01/2002 | SIZE | DWG. NO. | |
| * STATISTICAL DIMENSION | TOOLING REF. | T98-000-016 | | A | 98-000-016 | REV. 1 |
| NO. OF SAMPLES [0] | PRODUCT GROUP | CLAMP | | SCALE | 1:2 | CAD FILE: 9800 SERIES |
| | | | | | | SHEET 1 OF 1 |

| | | | | | | |
|----------|------------|-----------|-------|------|--|---|
| DWG. NO. | 98-000-017 | CAD FILE: | CLAMP | REF. | REVISIONS | 0 |
| | | | | | DIM 5.88 WAS 5.75, DIM .25 WAS .19 RM 03/09/2002 DB 03/09/2002 | 1 |



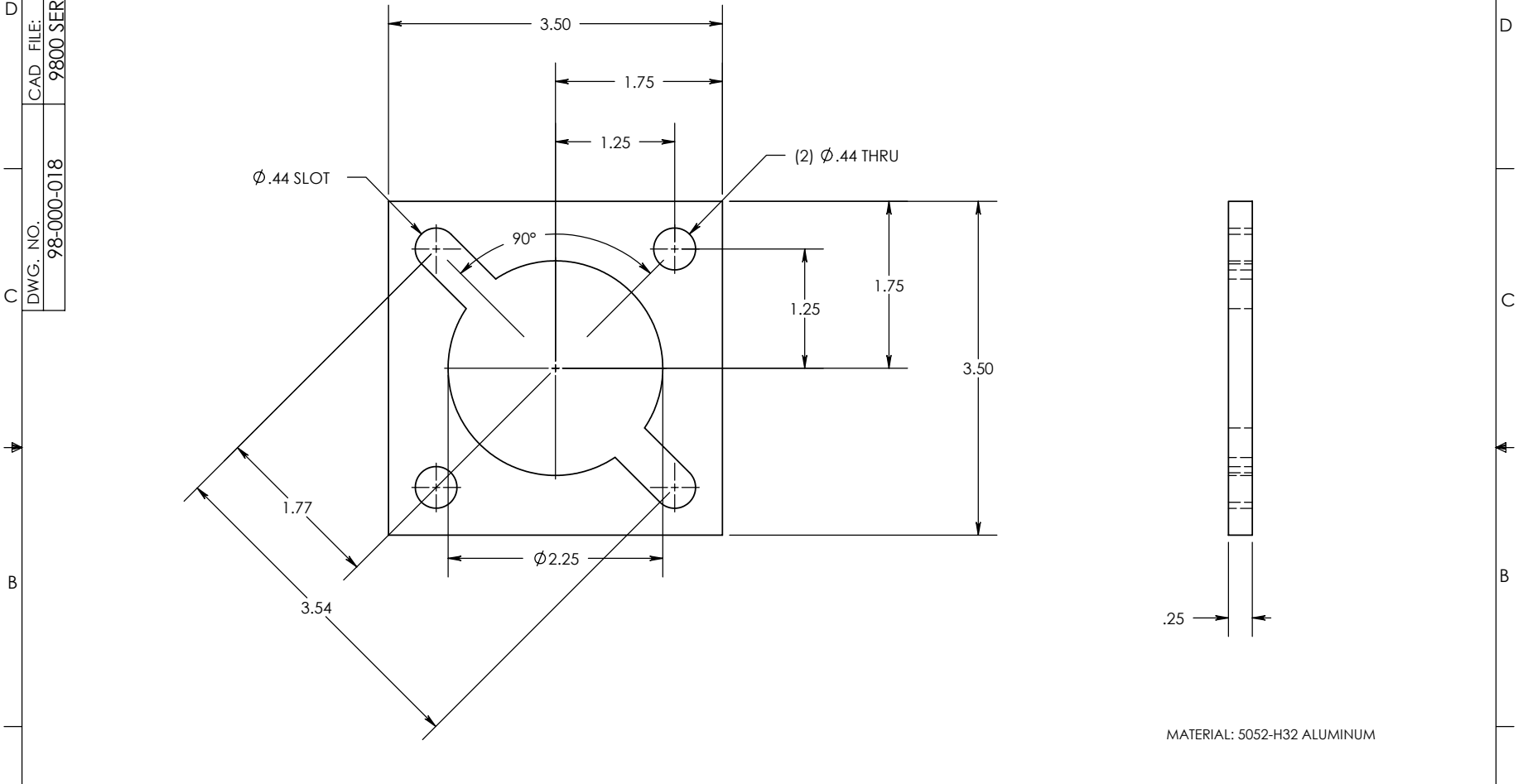
NOTES:
 1. REMOVE ALL FLASHING AND SHARP EDGES
 2. PERMISSABLE DRAFT, 3° ALL OVER

| | | | | | | |
|--|---|------------|------------|---|------------|-----------------|
| UNLESS OTHERWISE SPECIFIED DIMENSIONS ARE IN INCHES. TOLERANCES ARE: ONE PLACE MM ±1.00 TWO PLACE MM ±0.50 TWO PLACE DEC. ±.040 THREE PLACE DEC. ±.020 ANGLES 1° TEMPERATURE ±5°C VOLTAGE ±5% AMPERAGE ±5% RESISTANCE ±5% | CAD GENERATED DRAWING, DO NOT MANUALLY UPDATE. | | | SECONDARY BUSHING CLAMP (A356.1 CAST ALUMINUM) | | |
| | APPROVALS | DATE | | | | |
| | DRAWN BY: DB | 27/11/2001 | | | | |
| | CHECKED BY: RM | 07/01/2002 | | | | |
| | ENGINEERING | DB | 07/01/2002 | SIZE | DWG. NO. | |
| | TOOLING REF. | T98-000-17 | | A | 98-000-017 | REV. 1 |
| * STATISTICAL DIMENSION NO. OF SAMPLES [0] | PRODUCT GROUP | CLAMP | | SCALE | 1:1.5 | CAD FILE: CLAMP |
| | | | | | | SHEET 1 OF 1 |

8 7 6 5 4 3 2 1

REV. 0
 THE INFORMATION CONTAINED IN THIS DRAWING IS THE SOLE PROPERTY OF ENGINEERED POWER COMPONENTS LTD. ANY REPRODUCTION IN PART OR WHOLE WITHOUT THE WRITTEN PERMISSION OF ENGINEERED POWER COMPONENTS LTD. IS PROHIBITED.

DWG. NO. 98-000-018
 CAD FILE: 9800 SERIES



MATERIAL: 5052-H32 ALUMINUM

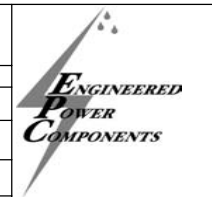
REVISIONS 0
 REF.

| | |
|---|--|
| 0 | |
|---|--|

UNLESS OTHERWISE SPECIFIED DIMENSIONS ARE IN INCHES. TOLERANCES ARE:
 ONE PLACE MM ±0.50
 TWO PLACE MM ±0.25
 TWO PLACE DEC. ±0.020
 THREE PLACE DEC. ±0.010
 ANGLES 1°
 TEMPERATURE ±5 °C
 VOLTAGE ±5 %
 AMPERAGE ±5 %
 RESISTANCE ±5 %

* STATISTICAL DIMENSION
 NO. OF SAMPLES [0]

CAD GENERATED DRAWING, DO NOT MANUALLY UPDATE.
 APPROVALS DATE
 DRAWN BY: DB 03/01/2002
 CHECKED BY: RM 03/01/2002
 ENGINEERING DB 03/01/2002



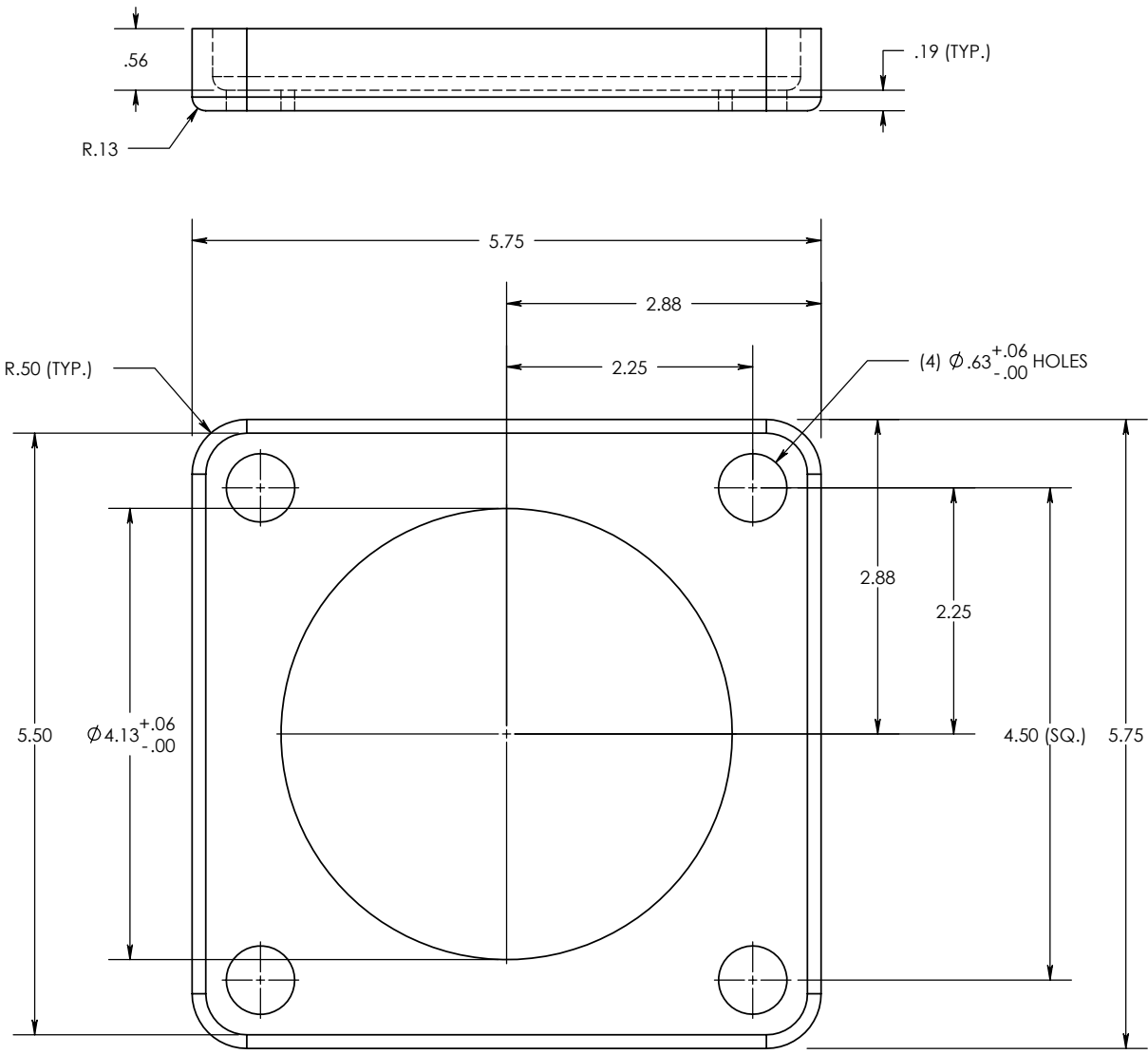
1001 SERIES
 LV BUSHING
 CLAMP

TOOLING REF. N/A
 PRODUCT GROUP CLAMP

SIZE A DWG. NO. 98-000-018 REV. 0
 SCALE: 1:1.5 CAD FILE: 9800 SERIES SHEET 1 OF 1

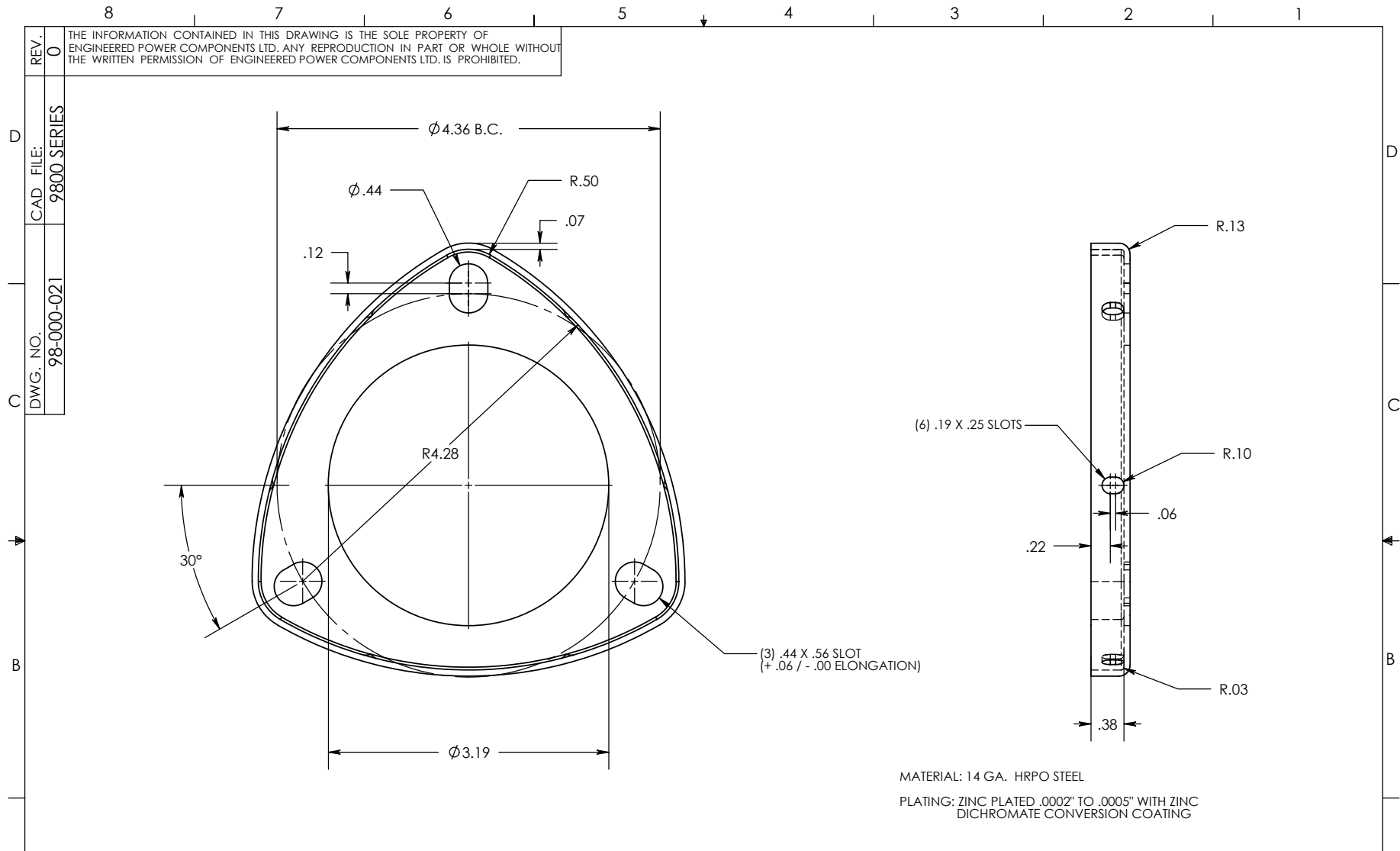
8 7 6 5 4 3 2 1

| | | | | | | |
|----------|------------|-----------|-------|------|-----------|---|
| DWG. NO. | 98-000-020 | CAD FILE: | CLAMP | REF. | REVISIONS | 0 |
|----------|------------|-----------|-------|------|-----------|---|




NOTES:
 1. REMOVE ALL FLASHING AND SHARP EDGES
 2. PERMISSABLE DRAFT, 3° ALL OVER

| | | | | | | |
|--|---|-------------|-------|---|------------|--|
| UNLESS OTHERWISE SPECIFIED DIMENSIONS ARE IN INCHES. TOLERANCES ARE: ONE PLACE MM ±1.00 TWO PLACE MM ±0.50 TWO PLACE DEC. ±.040 THREE PLACE DEC. ±.020 ANGLES 1° TEMPERATURE ±5°C VOLTAGE ±5% AMPERAGE ±5% RESISTANCE ±5% | CAD GENERATED DRAWING, DO NOT MANUALLY UPDATE. | | | 1004 SERIES SECONDARY BUSHING CLAMP (A356.1 CAST ALUMINUM) | | |
| | APPROVALS | | | DATE | | |
| | DRAWN BY: | DB | | 03/09/2002 | | |
| | CHECKED BY: | RM | | 03/09/2002 | | |
| | | ENGINEERING | DB | 03/09/2002 | | |
| * STATISTICAL DIMENSION NO. OF SAMPLES [0] | TOOLING REF. | T98-000-17 | | SIZE | DWG. NO. | |
| | PRODUCT GROUP | CLAMP | | A | 98-000-020 | |
| | | SCALE | 1:1.5 | CAD FILE: | CLAMP | |
| | | | | SHEET | 1 OF 1 | |
| | | | | REV. | 0 | |



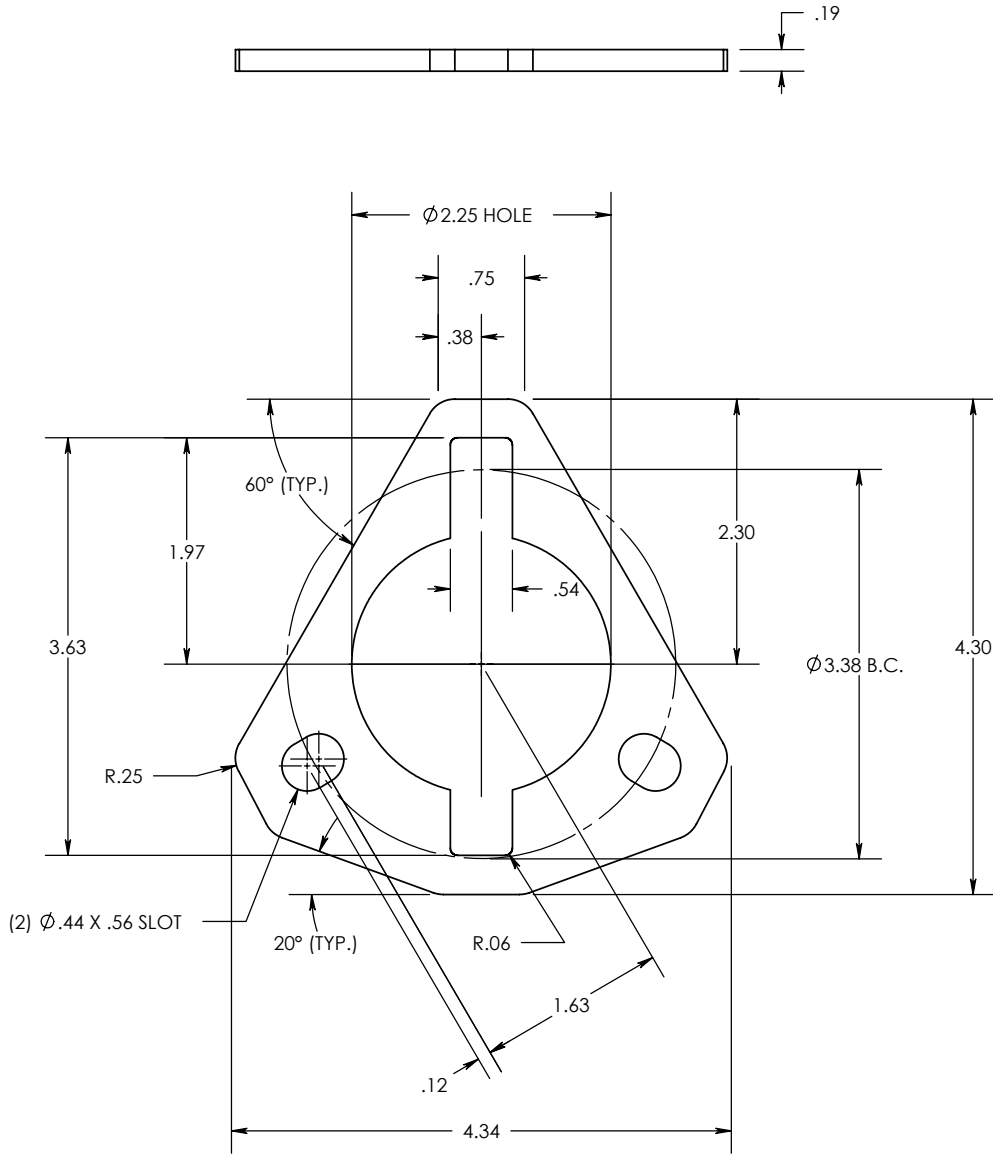
MATERIAL: 14 GA. HRPO STEEL

PLATING: ZINC PLATED .0002" TO .0005" WITH ZINC DICHROMATE CONVERSION COATING

| | | | | | | | | |
|---|-----------|---|---|---|---|---|---|---|
| A | REVISIONS | 0 | UNLESS OTHERWISE SPECIFIED DIMENSIONS ARE IN INCHES. TOLERANCES ARE: ONE PLACE MM ± 0.50 TWO PLACE MM ± 0.25 TWO PLACE DEC. ± 0.20 THREE PLACE DEC. ± 0.10 ANGLES 1° TEMPERATURE $\pm 5^\circ\text{C}$ VOLTAGE $\pm 5\%$ AMPERAGE $\pm 5\%$ RESISTANCE $\pm 5\%$ | CAD GENERATED DRAWING, DO NOT MANUALLY UPDATE. | |  | CLAMP (1200 SERIES APPARATUS & WELL BUSHING) | |
| | REF. | 0 | | * STATISTICAL DIMENSION NO. OF SAMPLES [0] | APPROVALS DRAWN BY: DB 13/11/2002 CHECKED BY: RM 06/12/2002 ENGINEERING DB 06/12/2002 TOOLING REF. N/A PRODUCT GROUP CLAMP | | DATE 13/11/2002 06/12/2002 06/12/2002 | SIZE A DWG. NO. 98-000-021 SCALE: 1:1.5 |

REV. 0
 CAD FILE: 9800 SERIES
 DWG. NO. 98-000-021
 THE INFORMATION CONTAINED IN THIS DRAWING IS THE SOLE PROPERTY OF ENGINEERED POWER COMPONENTS LTD. ANY REPRODUCTION IN PART OR WHOLE WITHOUT THE WRITTEN PERMISSION OF ENGINEERED POWER COMPONENTS LTD. IS PROHIBITED.

| | | | | | | |
|----------|------------|-----------|-------------|------|-----------|---|
| DWG. NO. | 98-000-022 | CAD FILE: | 9800 SERIES | REF. | REVISIONS | 0 |
|----------|------------|-----------|-------------|------|-----------|---|




UNLESS OTHERWISE SPECIFIED
DIMENSIONS ARE IN INCHES.
TOLERANCES ARE:

ONE PLACE MM ±0.50
TWO PLACE MM ±0.25
TWO PLACE DEC. ±.020
THREE PLACE DEC. ±.010
ANGLES 1°

TEMPERATURE ±5°C
VOLTAGE ±5%
AMPERAGE ±5%
RESISTANCE ±5%

* STATISTICAL DIMENSION
NO. OF SAMPLES [0]

| | |
|---|-------------|
| CAD GENERATED DRAWING, DO NOT MANUALLY UPDATE. | |
| APPROVALS | DATE |
| DRAWN BY: DB | 28/03/2003 |
| CHECKED BY: RM | 28/03/2003 |
| ENGINEERING DB | 28/03/2003 |
| TOOLING REF. | N/A |
| PRODUCT GROUP | 9800 SERIES |



SECONDARY BUSHING CLAMP

(MILD STEEL,
ZINC DICHROMATE
PLATED)

| | | |
|----------|-------------|--------|
| SIZE | DWG. NO. | REV. |
| A | 98-000-022 | 0 |
| SCALE | CAD FILE: | SHEET |
| 1:1.5 | 9800 SERIES | 1 OF 1 |