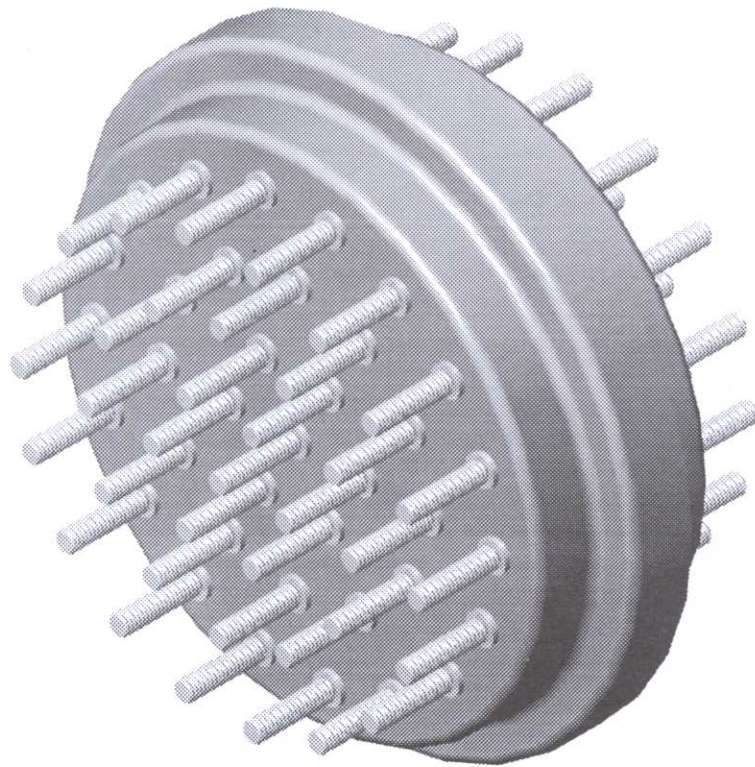


900 SERIES MULTI STUD TRANSFORMER BUSHINGS

600 V, 10 kV BIL (AIR/OIL)



USE:

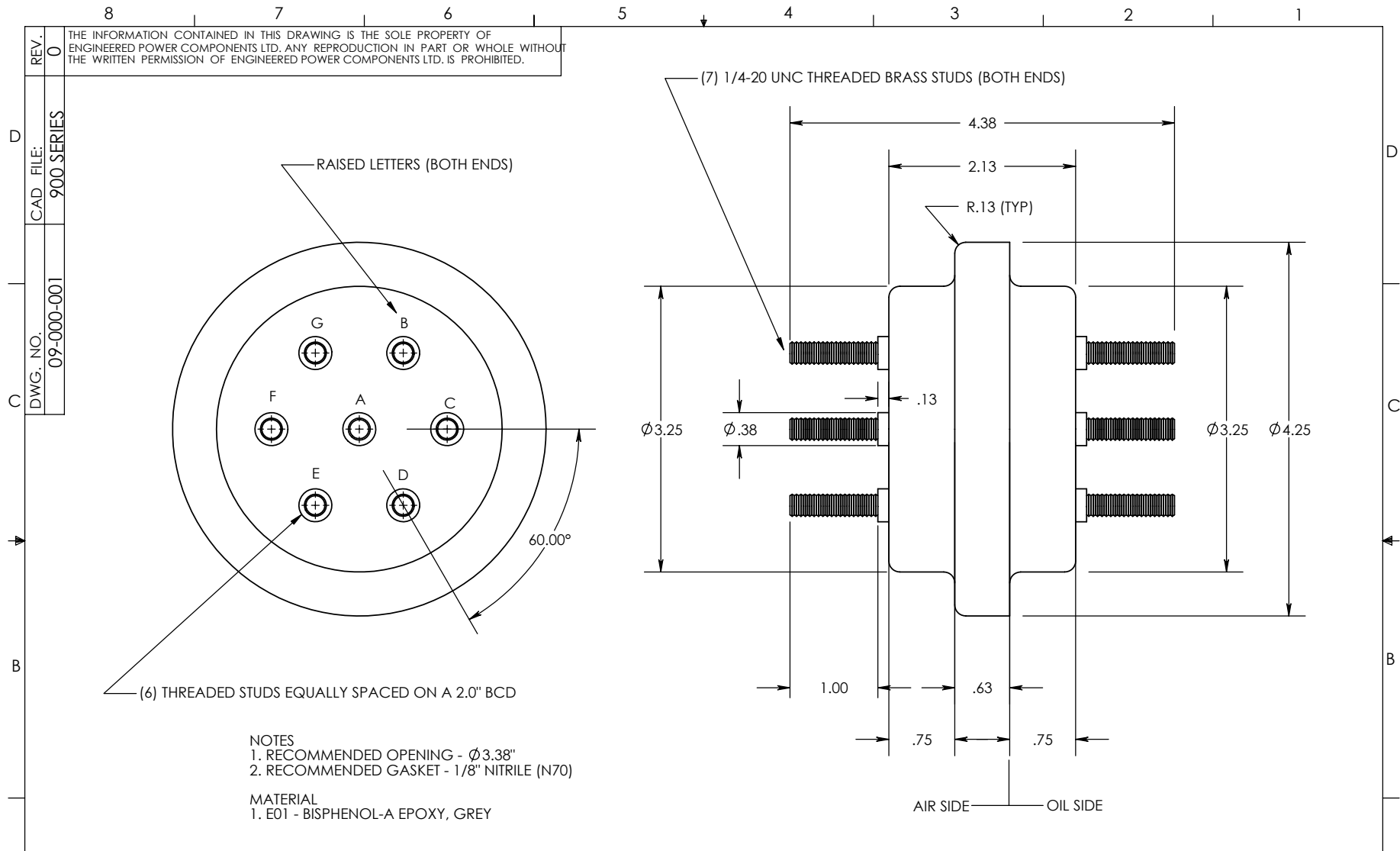
900 Series Multi Stud Transformer Bushings are designed for use as terminal blocks in liquid filled transformer applications. These units are designed for indoor or outdoor enclosed applications where units will encounter no UV exposure.

CONSTRUCTION:

900 Series Bushings are of rugged molded epoxy design with integrally cast-in brass studs. Studs are treated prior to casting to guarantee a positive oil seal. The studs are provided with a standard thread option on both the air and oil side.

CUSTOM OPTIONS:


900 Series Bushings can be supplied with numerous custom termination methods designed to customer requirements.

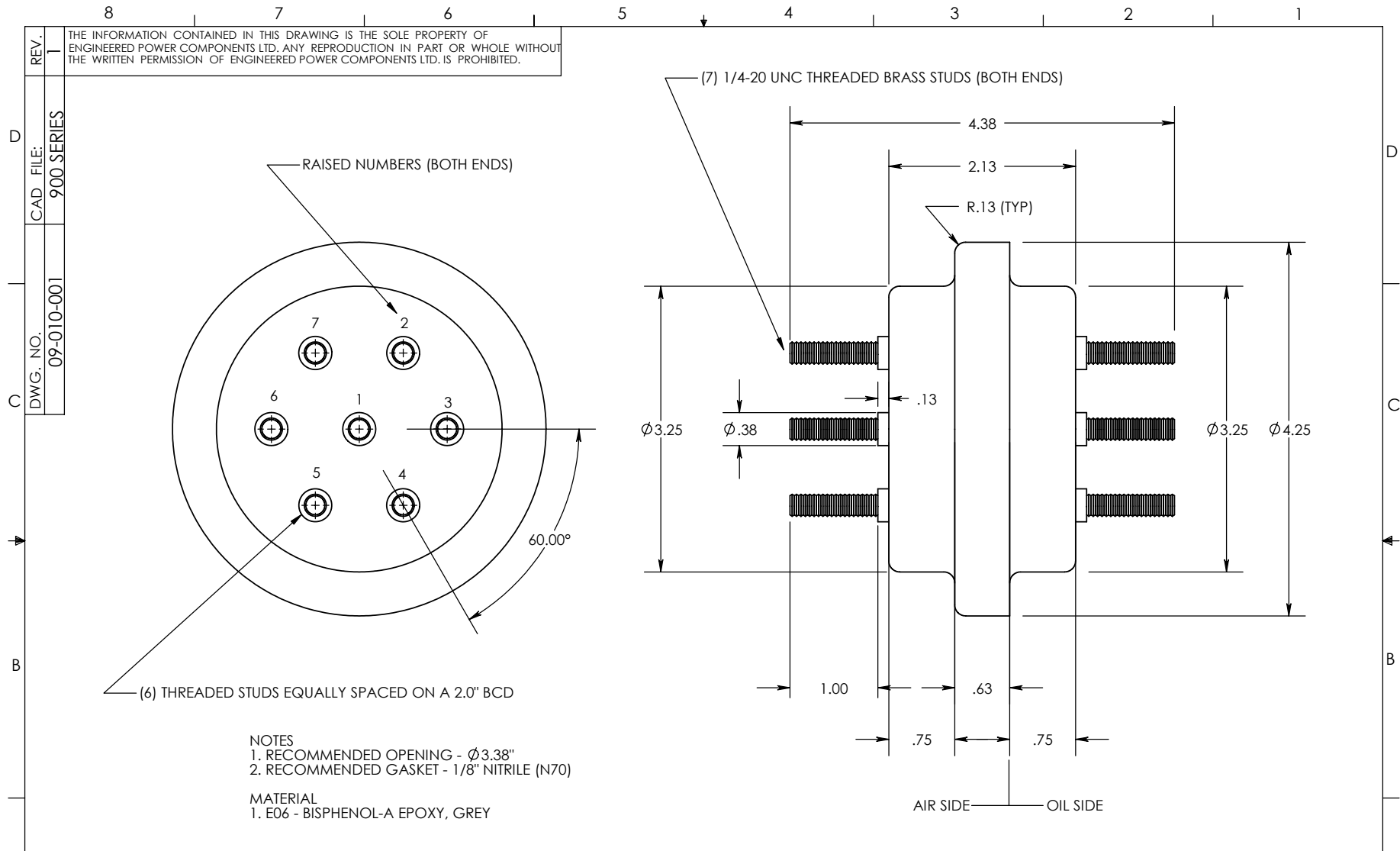


THE INFORMATION CONTAINED IN THIS DRAWING IS THE SOLE PROPERTY OF ENGINEERED POWER COMPONENTS LTD. ANY REPRODUCTION IN PART OR WHOLE WITHOUT THE WRITTEN PERMISSION OF ENGINEERED POWER COMPONENTS LTD. IS PROHIBITED.

REV. 0
 CAD FILE: 900 SERIES
 DWG. NO. 09-000-001


NOTES
 1. RECOMMENDED OPENING - ϕ 3.38"
 2. RECOMMENDED GASKET - 1/8" NITRILE (N70)
 MATERIAL
 1. E01 - BISPHENOL-A EPOXY, GREY

A	REVISIONS	0	UNLESS OTHERWISE SPECIFIED DIMENSIONS ARE IN INCHES. TOLERANCES ARE: ONE PLACE MM \pm 0.50 TWO PLACE MM \pm 0.25 TWO PLACE DEC. \pm 0.020 THREE PLACE DEC. \pm 0.010 ANGLES 1° TEMPERATURE \pm 5°C VOLTAGE \pm 5% AMPERAGE \pm 5% RESISTANCE \pm 5%	CAD GENERATED DRAWING, DO NOT MANUALLY UPDATE. APPROVALS _____ DATE _____ DRAWN BY: DB 05/17/19 CHECKED BY: _____ ENGINEERING _____	 7 STUD TERMINAL BLOCK 0.7kV / 10kV BIL (TRANSFORMER MOUNTED)
	REF.	* STATISTICAL DIMENSION NO. OF SAMPLES [0]			



NOTES
 1. RECOMMENDED OPENING - ϕ 3.38"
 2. RECOMMENDED GASKET - 1/8" NITRILE (N70)

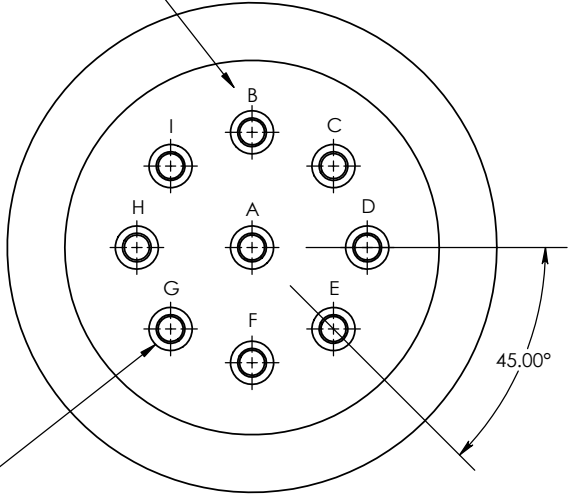
MATERIAL
 1. E06 - BISPHENOL-A EPOXY, GREY

A	REVISIONS	0	1	UNLESS OTHERWISE SPECIFIED DIMENSIONS ARE IN INCHES. TOLERANCES ARE: ONE PLACE MM ± 0.50 TWO PLACE MM ± 0.25 TWO PLACE DEC. ± 0.20 THREE PLACE DEC. ± 0.10 ANGLES 1° TEMPERATURE $\pm 5^\circ\text{C}$ VOLTAGE $\pm 5\%$ AMPERAGE $\pm 5\%$ RESISTANCE $\pm 5\%$	CAD GENERATED DRAWING, DO NOT MANUALLY UPDATE. APPROVALS: DB 15/06/2000 CHECKED BY: RM 16/06/2000 ENGINEERING: DB 16/06/2000		7 STUD TERMINAL BLOCK	
	E06 EPOXY WAS E01 RM 11/08/2003 DB 11/08/2003	0.7kV / 10kV BIL (TRANSFORMER MOUNTED)						
REF.	* STATISTICAL DIMENSION NO. OF SAMPLES [0]			TOOLING REF. T09-010 PRODUCT GROUP 900-0 SERIES	SIZE A DWG. NO. 09-010-001 SCALE: 1:1.5 CAD FILE: 900 SERIES	SHEET 1 OF 1	REV. 1	

8 7 6 5 4 3 2 1

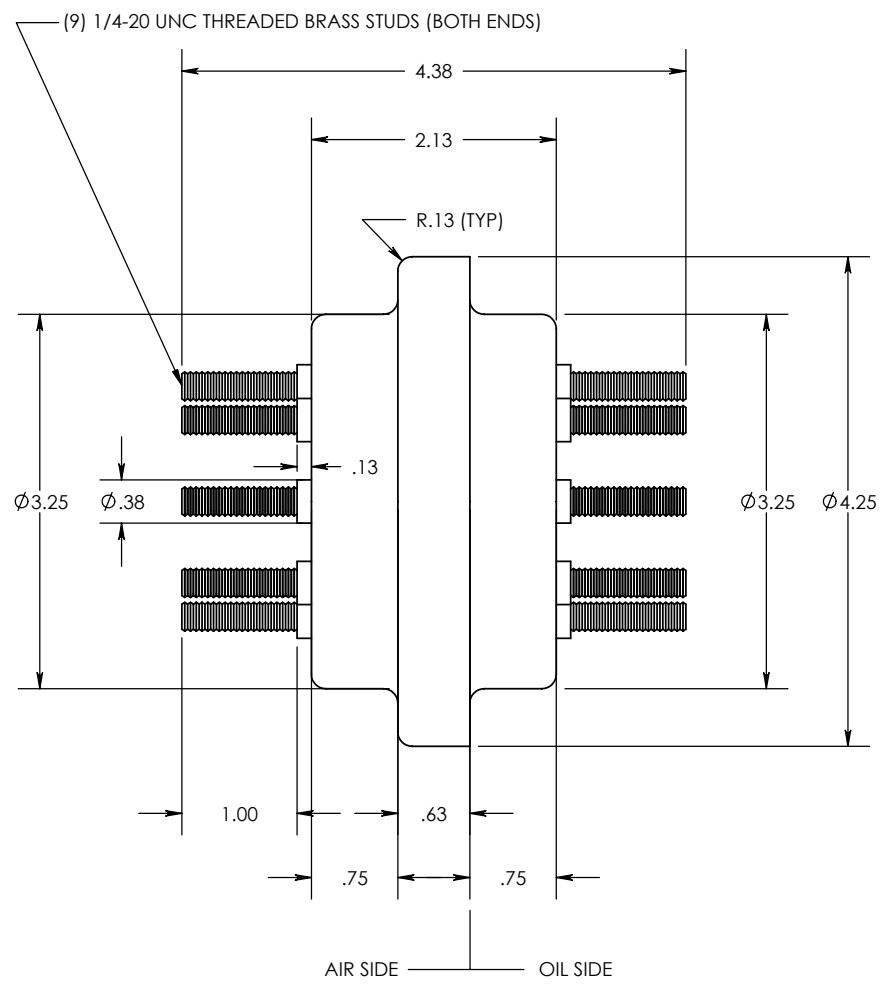
REV. 0
 THE INFORMATION CONTAINED IN THIS DRAWING IS THE SOLE PROPERTY OF ENGINEERED POWER COMPONENTS LTD. ANY REPRODUCTION IN PART OR WHOLE WITHOUT THE WRITTEN PERMISSION OF ENGINEERED POWER COMPONENTS LTD. IS PROHIBITED.

CAD FILE: 900 SERIES
 DWG. NO. 09-001-001



(8) THREADED STUDS EQUALLY SPACED ON A 2.0" BCD

NOTES
 1. RECOMMENDED OPENING - ϕ 3.38"
 2. RECOMMENDED GASKET - 1/8" NITRILE (N70)
 MATERIAL
 1. E01 - BISPHENOL-A EPOXY, GREY



UNLESS OTHERWISE SPECIFIED DIMENSIONS ARE IN INCHES. TOLERANCES ARE:
 ONE PLACE MM ± 0.50
 TWO PLACE MM ± 0.25
 TWO PLACE DEC. ± 0.020
 THREE PLACE DEC. ± 0.010
 ANGLES 1°
 TEMPERATURE $\pm 5^\circ\text{C}$
 VOLTAGE $\pm 5\%$
 AMPERAGE $\pm 5\%$
 RESISTANCE $\pm 5\%$

CAD GENERATED DRAWING, DO NOT MANUALLY UPDATE.
 APPROVALS DATE
 DRAWN BY: DB 05/17/19
 CHECKED BY:
 ENGINEERING



9 STUD TERMINAL BLOCK
 0.7kV / 10kV BIL
 (TRANSFORMER MOUNTED)

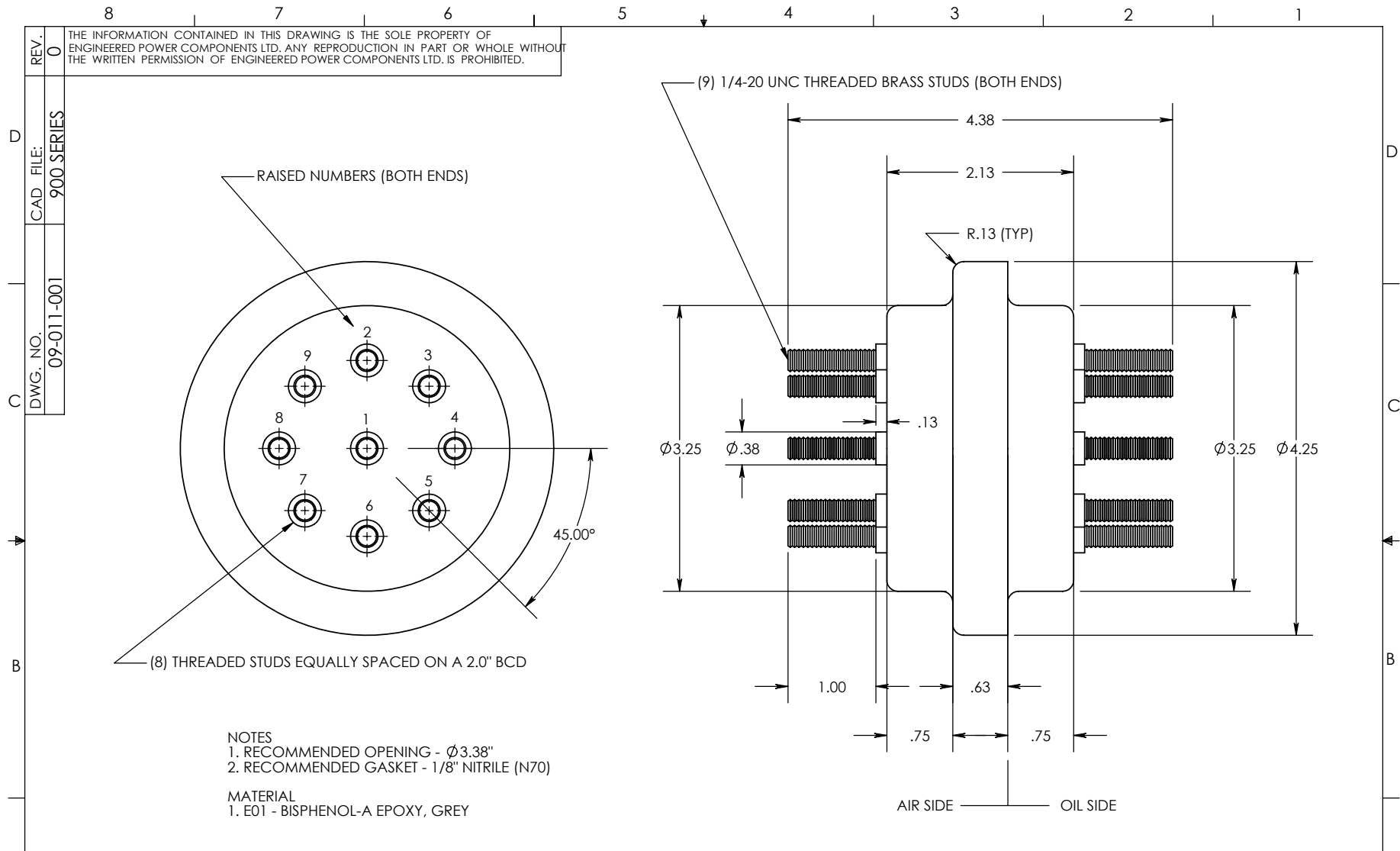
REVISIONS 0
 REF.

* STATISTICAL DIMENSION
 NO. OF SAMPLES [0]


TOOLING REF. T09-001
 PRODUCT GROUP 900-1 SERIES

SIZE A DWG. NO. 09-001-001 REV. 0
 SCALE: 1:1.5 CAD FILE: 900 SERIES SHEET 1 OF 1

8 7 6 5 4 3 2 1



NOTES
 1. RECOMMENDED OPENING - ϕ 3.38"
 2. RECOMMENDED GASKET - 1/8" NITRILE (N70)
 MATERIAL
 1. E01 - BISPHENOL-A EPOXY, GREY

A	REVISIONS	0	UNLESS OTHERWISE SPECIFIED DIMENSIONS ARE IN INCHES. TOLERANCES ARE: ONE PLACE MM ± 0.50 TWO PLACE MM ± 0.25 TWO PLACE DEC. ± 0.020 THREE PLACE DEC. ± 0.010 ANGLES 1° TEMPERATURE $\pm 5^\circ\text{C}$ VOLTAGE $\pm 5\%$ AMPERAGE $\pm 5\%$ RESISTANCE $\pm 5\%$	CAD GENERATED DRAWING, DO NOT MANUALLY UPDATE. APPROVALS _____ DATE _____ DRAWN BY: DB 06/15/2000 CHECKED BY: _____ ENGINEERING _____		9 STUD TERMINAL BLOCK 0.7kV / 10kV BIL (TRANSFORMER MOUNTED)	
	REF.	0				* STATISTICAL DIMENSION NO. OF SAMPLES [0]	TOOLING REF. T09-011 PRODUCT GROUP 900-1 SERIES

REV. 0
 THE INFORMATION CONTAINED IN THIS DRAWING IS THE SOLE PROPERTY OF ENGINEERED POWER COMPONENTS LTD. ANY REPRODUCTION IN PART OR WHOLE WITHOUT THE WRITTEN PERMISSION OF ENGINEERED POWER COMPONENTS LTD. IS PROHIBITED.

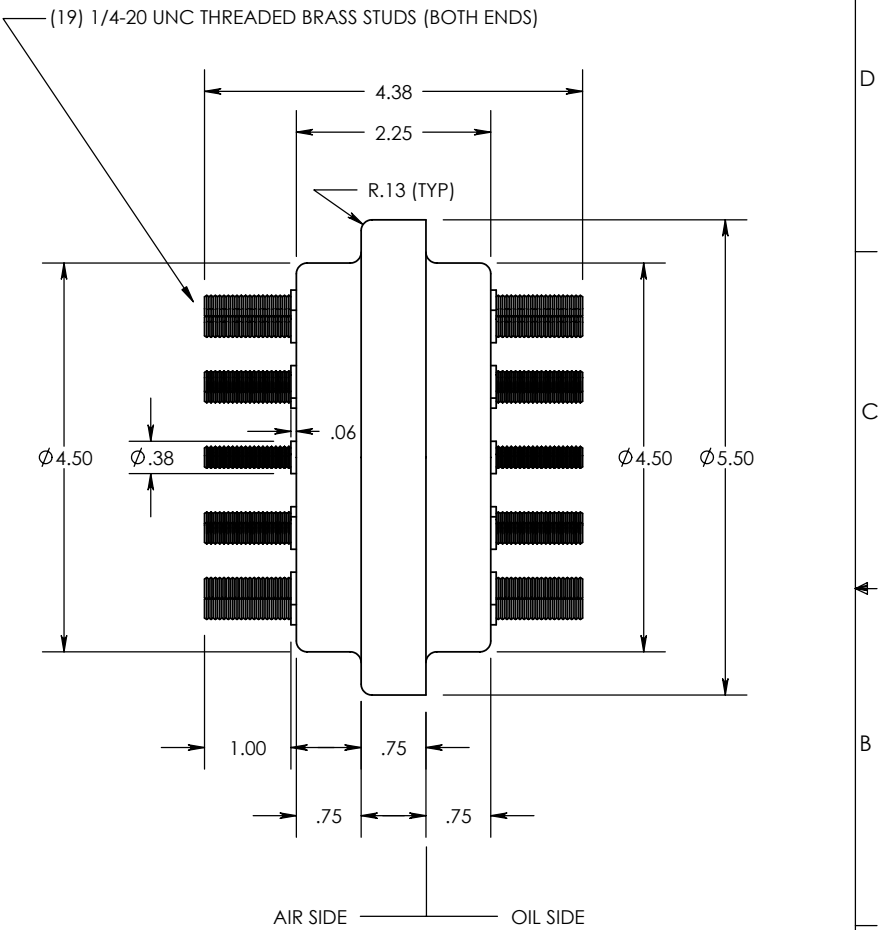
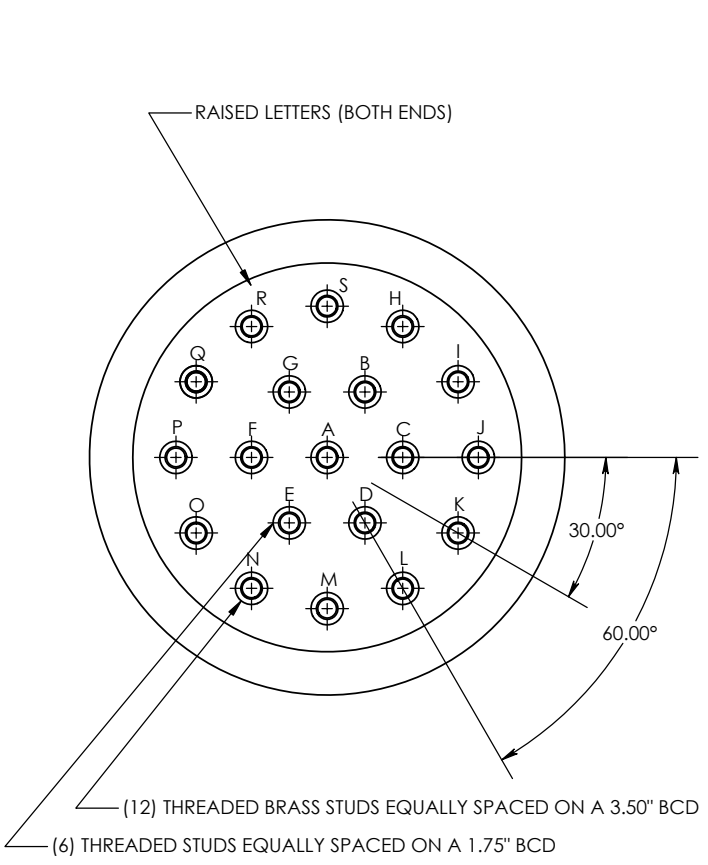
DWG. NO. 09-011-001
 CAD FILE: 900 SERIES

8 7 6 5 4 3 2 1

REV. 0
 THE INFORMATION CONTAINED IN THIS DRAWING IS THE SOLE PROPERTY OF ENGINEERED POWER COMPONENTS LTD. ANY REPRODUCTION IN PART OR WHOLE WITHOUT THE WRITTEN PERMISSION OF ENGINEERED POWER COMPONENTS LTD. IS PROHIBITED.

DWG. NO. 09-002-001
 CAD FILE: 900 SERIES

D
 C
 B
 A



NOTES
 1. RECOMMENDED OPENING - ϕ 4.63"
 2. RECOMMENDED GASKET - 1/8" NITRILE (N70)
 MATERIAL
 1. E01 - BISPHENOL-A EPOXY, GREY

REVISIONS
 REF.

0	
---	--

UNLESS OTHERWISE SPECIFIED DIMENSIONS ARE IN INCHES. TOLERANCES ARE:	
ONE PLACE MM	± 0.50
TWO PLACE MM	± 0.25
TWO PLACE DEC.	± 0.020
THREE PLACE DEC.	± 0.010
ANGLES	1°
TEMPERATURE	$\pm 5^\circ\text{C}$
VOLTAGE	$\pm 5\%$
AMPERAGE	$\pm 5\%$
RESISTANCE	$\pm 5\%$
* STATISTICAL DIMENSION NO. OF SAMPLES [0]	

CAD GENERATED DRAWING, DO NOT MANUALLY UPDATE.			19 STUD TERMINAL BLOCK	
APPROVALS	DATE		0.7kV / 10kV BIL	
DRAWN BY: DB	05/18/19		(TRANSFORMER MOUNTED)	
CHECKED BY:				
ENGINEERING				
TOOLING REF. T09-002	SIZE A	DWG. NO. 09-002-001	REV. 0	
PRODUCT GROUP 900-2 SERIES	SCALE: 2	CAD FILE: 900 SERIES	SHEET 1	OF 1

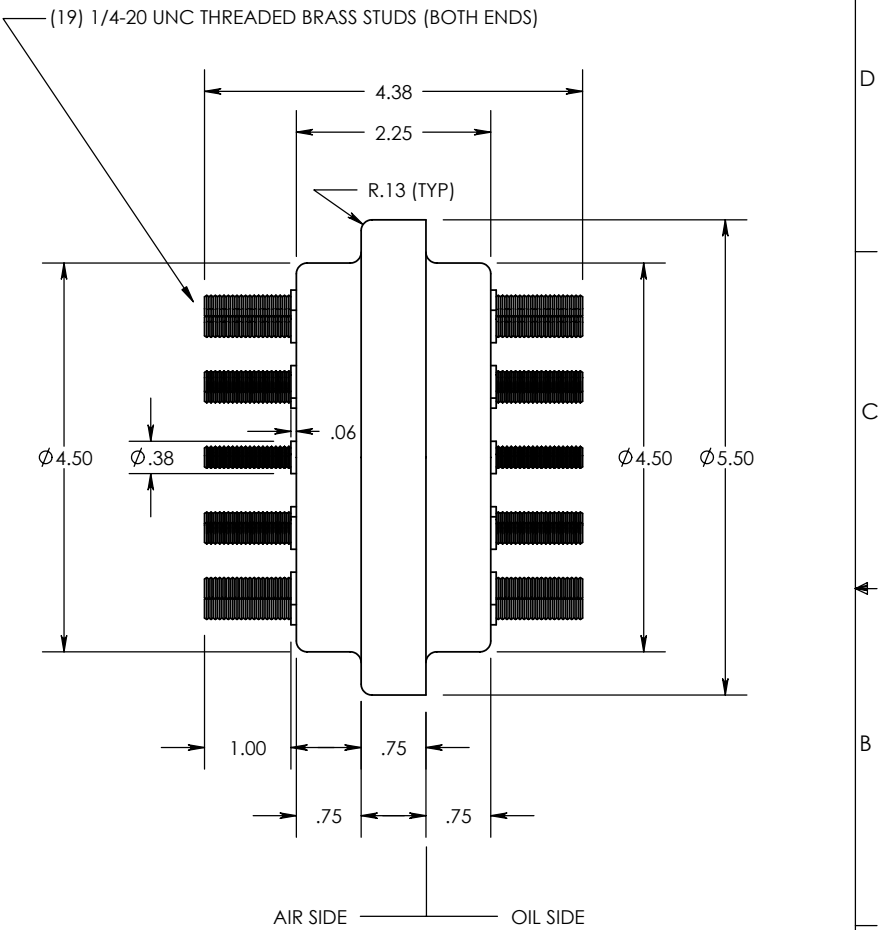
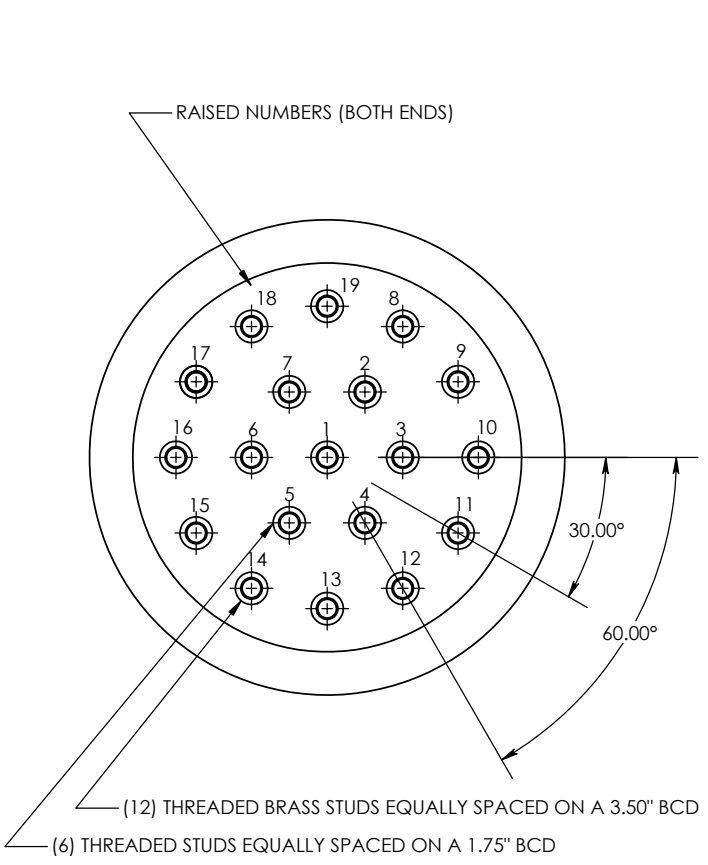
8 7 6 5 4 3 2 1

8 7 6 5 4 3 2 1

REV. 0
 THE INFORMATION CONTAINED IN THIS DRAWING IS THE SOLE PROPERTY OF ENGINEERED POWER COMPONENTS LTD. ANY REPRODUCTION IN PART OR WHOLE WITHOUT THE WRITTEN PERMISSION OF ENGINEERED POWER COMPONENTS LTD. IS PROHIBITED.

DWG. NO. 09-012-001
 CAD FILE: 900 SERIES

D
 C
 B
 A



NOTES
 1. RECOMMENDED OPENING - Ø 4.63"
 2. RECOMMENDED GASKET - 1/8" NITRILE (N70)

MATERIAL
 1. E01 - BISPHENOL-A EPOXY, GREY

REVISIONS 0
 REF.

UNLESS OTHERWISE SPECIFIED DIMENSIONS ARE IN INCHES. TOLERANCES ARE:
 ONE PLACE MM ±0.50
 TWO PLACE MM ±0.25
 TWO PLACE DEC. ±0.020
 THREE PLACE DEC. ±0.010
 ANGLES 1°

TEMPERATURE ±5 °C
 VOLTAGE ±5 %
 AMPERAGE ±5 %
 RESISTANCE ±5 %

* STATISTICAL DIMENSION
 NO. OF SAMPLES [0]

CAD GENERATED DRAWING, DO NOT MANUALLY UPDATE.

APPROVALS	DATE
DRAWN BY: DB	06/15/2000
CHECKED BY:	
ENGINEERING	

TOOLING REF. T09-012
 PRODUCT GROUP 900-2 SERIES

19 STUD TERMINAL BLOCK
 0.7kV / 10kV BIL
 (TRANSFORMER MOUNTED)

SIZE A	DWG. NO. 09-012-001	REV. 0
SCALE: 2	CAD FILE: 900 SERIES	SHEET 1 OF 1

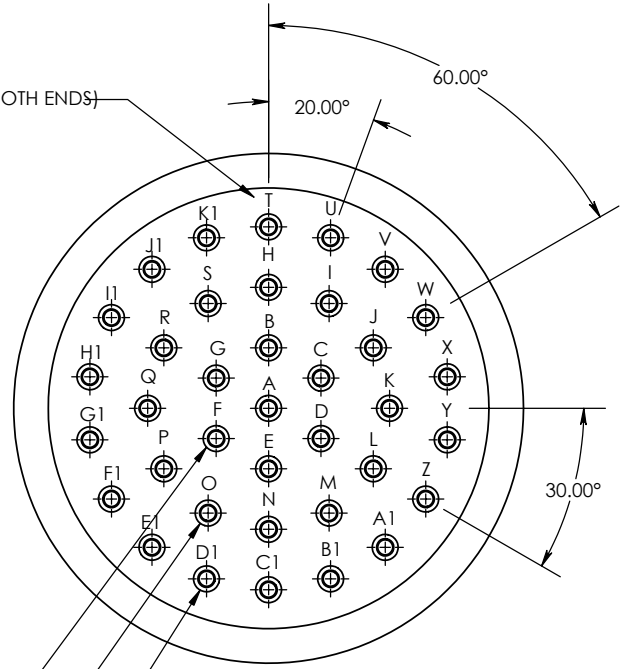
8 7 6 5 4 3 2 1

8 7 6 5 4 3 2 1

REV. 0
 THE INFORMATION CONTAINED IN THIS DRAWING IS THE SOLE PROPERTY OF ENGINEERED POWER COMPONENTS LTD. ANY REPRODUCTION IN PART OR WHOLE WITHOUT THE WRITTEN PERMISSION OF ENGINEERED POWER COMPONENTS LTD. IS PROHIBITED.

CAD FILE: 900 SERIES
 DWG. NO. 09-003-001

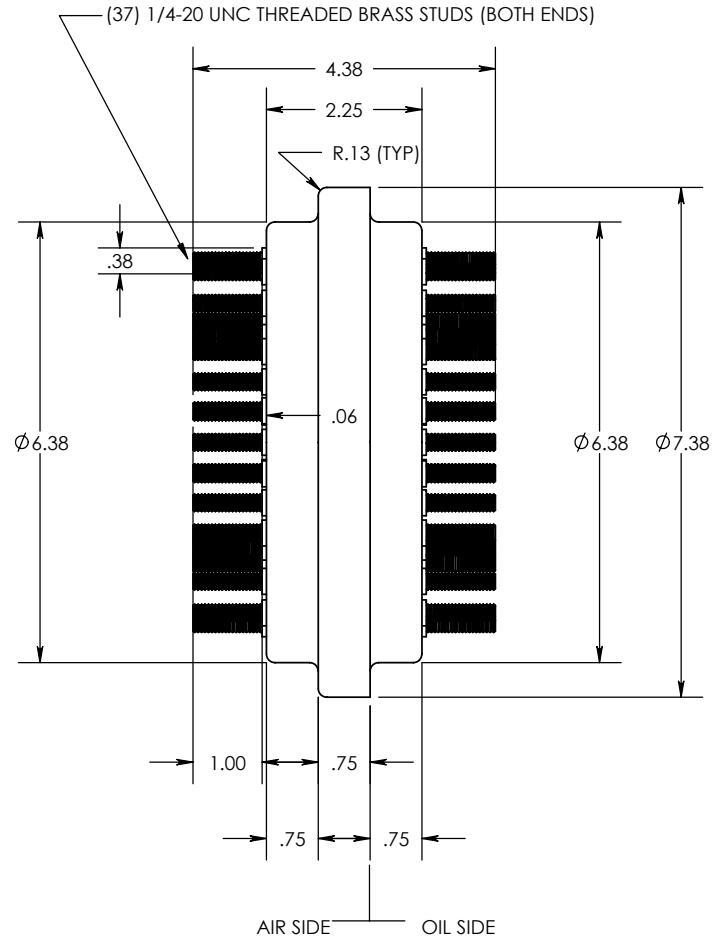
RAISED LETTERS (BOTH ENDS)



- (18) THREADED STUDS EQUALLY SPACED ON A $\phi 5.25$ " BCD
- (12) THREADED STUDS EQUALLY SPACED ON A $\phi 3.50$ " BCD
- (6) THREADED STUDS EQUALLY SPACED ON A $\phi 1.75$ " BCD

NOTES
 1. RECOMMENDED OPENING - $\phi 6.50$ "
 2. RECOMMENDED GASKET - 1/8" NITRILE (N70)

MATERIAL
 1. E01 - BISPHENOL-A EPOXY, GREY



D
C
B
A

D
C
B
A

REVISIONS	0	
	REF.	

UNLESS OTHERWISE SPECIFIED DIMENSIONS ARE IN INCHES. TOLERANCES ARE:	
ONE PLACE MM	± 0.50
TWO PLACE MM	± 0.25
TWO PLACE DEC.	± 0.020
THREE PLACE DEC.	± 0.010
ANGLES	1°
TEMPERATURE	$\pm 5^\circ\text{C}$
VOLTAGE	$\pm 5\%$
AMPERAGE	$\pm 5\%$
RESISTANCE	$\pm 5\%$
* STATISTICAL DIMENSION	
NO. OF SAMPLES [0]	
CAD GENERATED DRAWING, DO NOT MANUALLY UPDATE.	
APPROVALS	DATE
DRAWN BY: DB	05/18/19
CHECKED BY:	
ENGINEERING	
TOOLING REF.	T09-003
PRODUCT GROUP	900-3 SERIES

37 STUD TERMINAL BLOCK
 0.7kV / 10 kV BIL
 (TRANSFORMER MOUNTED)

SIZE A	DWG. NO. 09-003-001	REV. 0
SCALE: 2.5	CAD FILE: 900 SERIES	SHEET 1 OF 1

8 7 6 5 4 3 2 1