

# 1012 SERIES

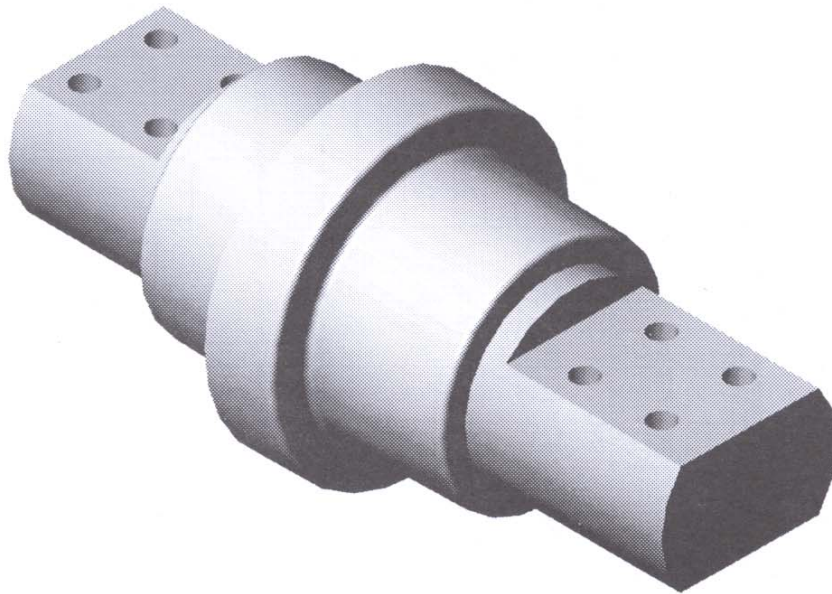
## TRANSFORMER MOUNTED SECONDARY LV BUSHINGS

2.5 kV, 45 kV BIL (AIR/OIL),

1.2 kV, 30 kV BIL (AIR/AIR)

CONDUCTIVITY: 99.99%

CURRENT RATING: 7500 AMP (MAX.)



### USE:

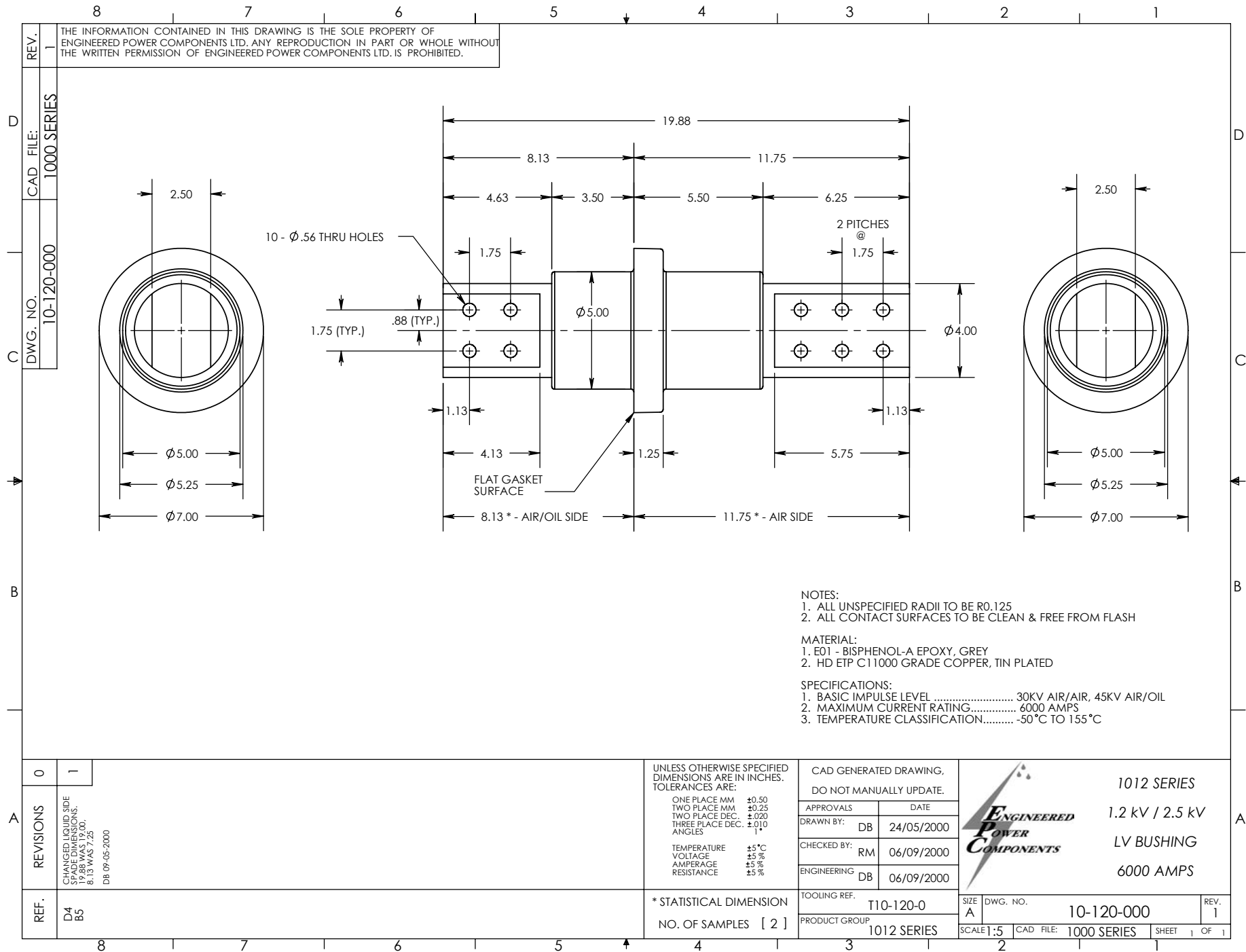
1007 Series Transformer Mounted LV Bushings are designed for use as secondary bushings in liquid filled transformer applications. Units are available for both outdoor (UV exposed) and enclosed applications. The 1007 Series bushing is designed for use in ambient temperatures ranging from -50°C to 155°C. Current ratings are based on 65°C rise above ambient and are typical for sidewall mounting with shanks below oil level. Current carrying capacity is affected by mounting and termination methods.

### CONSTRUCTION:

1007 Series Secondary Bushings are constructed of C110 electrolytic grade copper. Insulation is Bis-A cast epoxy for enclosed applications. Outdoor units are supplied with Cycloaliphatic epoxy material. 1007 Series bushings are designed for external clamping applications.

### CUSTOM OPTIONS:

1007 Series Secondary Bushings are easily customized for non-standard applications. Stud options and through hole configurations can be adapted to suit customer requirements for easy installation in existing equipment.



REV. 1  
 THE INFORMATION CONTAINED IN THIS DRAWING IS THE SOLE PROPERTY OF ENGINEERED POWER COMPONENTS LTD. ANY REPRODUCTION IN PART OR WHOLE WITHOUT THE WRITTEN PERMISSION OF ENGINEERED POWER COMPONENTS LTD. IS PROHIBITED.

CAD FILE: 1000 SERIES  
 DWG. NO. 10-120-000

NOTES:  
 1. ALL UNSPECIFIED RADII TO BE R0.125  
 2. ALL CONTACT SURFACES TO BE CLEAN & FREE FROM FLASH

MATERIAL:  
 1. E01 - BISPHENOL-A EPOXY, GREY  
 2. HD ETP C11000 GRADE COPPER, TIN PLATED

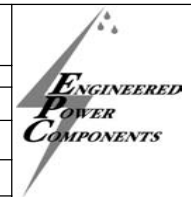
SPECIFICATIONS:  
 1. BASIC IMPULSE LEVEL ..... 30KV AIR/AIR, 45KV AIR/OIL  
 2. MAXIMUM CURRENT RATING..... 6000 AMPS  
 3. TEMPERATURE CLASSIFICATION..... -50 °C TO 155 °C

0	1
---	---

REVISIONS  
 CHANGED LIQUID SIDE CHANNELS DIMENSIONS. 19.88 WAS 19.00. 8.13 WAS 7.25  
 DB 09-05-2000

UNLESS OTHERWISE SPECIFIED DIMENSIONS ARE IN INCHES. TOLERANCES ARE:  
 ONE PLACE MM ±0.50  
 TWO PLACE MM ±0.25  
 TWO PLACE DEC. ±0.020  
 THREE PLACE DEC. ±0.010  
 ANGLES 1°  
 TEMPERATURE ±5 °C  
 VOLTAGE ±5 %  
 AMPERAGE ±5 %  
 RESISTANCE ±5 %

CAD GENERATED DRAWING, DO NOT MANUALLY UPDATE.	
APPROVALS	DATE
DRAWN BY: DB	24/05/2000
CHECKED BY: RM	06/09/2000
ENGINEERING DB	06/09/2000



1012 SERIES  
 1.2 kV / 2.5 kV  
 LV BUSHING  
 6000 AMPS

REF. D4 B5

\* STATISTICAL DIMENSION  
 NO. OF SAMPLES [ 2 ]

TOOLING REF.	T10-120-0
PRODUCT GROUP	1012 SERIES

SIZE A	DWG. NO. 10-120-000	REV. 1
--------	---------------------	--------

