

**ENGINEERED  
POWER  
COMPONENTS**

## 1005 SERIES

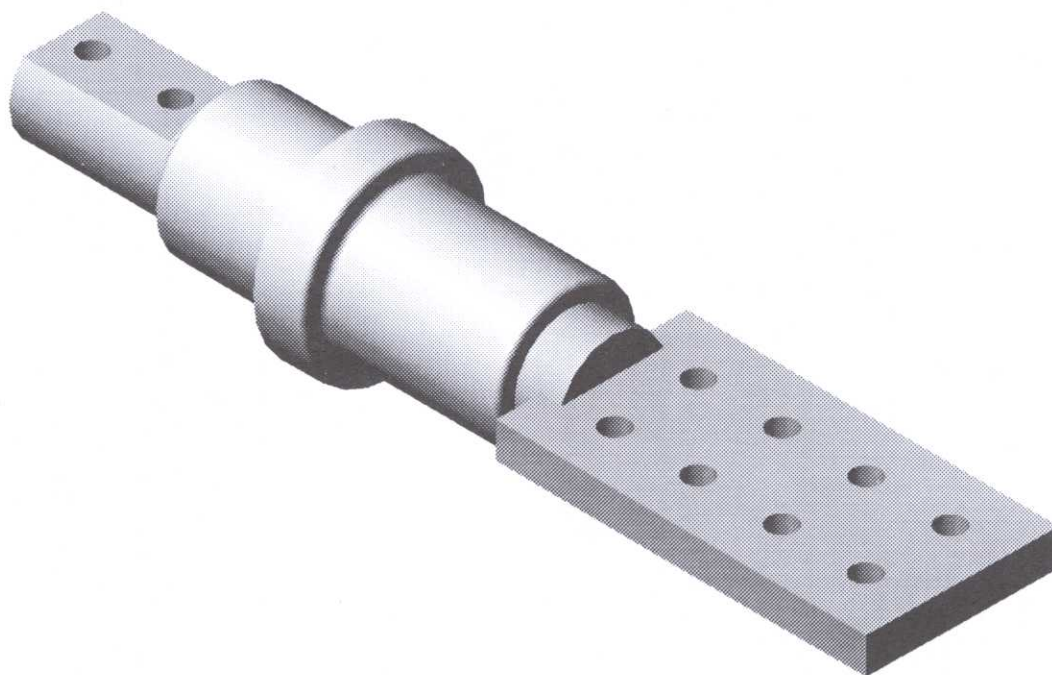
### TRANSFORMER MOUNTED SECONDARY LV BUSHINGS

2.5 kV, 45 kV BIL (AIR/OIL),

1.2 kV, 30 kV BIL (AIR/AIR)

CONDUCTIVITY: 99.99%

CURRENT RATING: 4200 AMP (MAX.)



### USE:

1005 Series Transformer Mounted LV Bushings are designed for use as secondary bushings in liquid filled transformer applications. Units are available for both outdoor (UV exposed) and enclosed applications. The 1005 Series bushing is designed for use in ambient temperatures ranging from -50°C to 155°C. Current ratings are based on 65°C rise above ambient and are typical for sidewall mounting with shanks below oil level. Current carrying capacity is affected by mounting and termination methods.

### CONSTRUCTION:

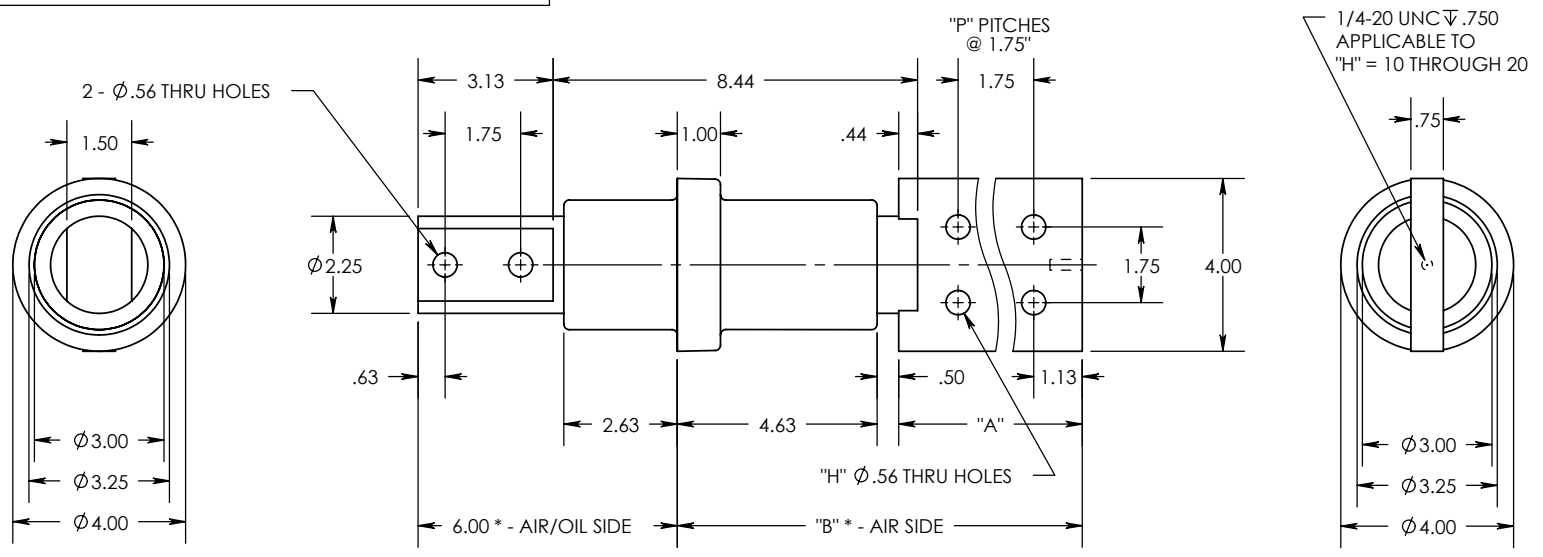
1005 Series Secondary Bushings are constructed of C110 electrolytic grade copper with silver brazed connections for maximum conductivity. Insulation is Bis-A cast epoxy for enclosed applications. Outdoor units are supplied with Cycloaliphatic epoxy material. 1005 Series bushings are designed for external clamping applications.

### CUSTOM OPTIONS:

1005 Series Secondary Bushings are easily customized for non-standard applications. Spade and stud options can be adapted to suit customer requirements for easy installation in existing equipment.

REV. 0  
 DWG. NO. 10-053-000  
 CAD FILE: 1000 SERIES

THE INFORMATION CONTAINED IN THIS DRAWING IS THE SOLE PROPERTY OF ENGINEERED POWER COMPONENTS LTD. ANY REPRODUCTION IN PART OR WHOLE WITHOUT THE WRITTEN PERMISSION OF ENGINEERED POWER COMPONENTS LTD. IS PROHIBITED.



**PRODUCT SELECTION GUIDE**

TERMINAL STYLE (AIR SIDE)				PART NUMBERS	PLATING TYPES		
"A"	"B"	"H"	"P"		TIN	SILVER	NONE
4.25	9.38	4	1	10-053-000 0A E01	T	S	N
6.00	11.13	6	2	10-053-001 0A E01	T	S	N
7.75	12.88	8	3	10-053-002 0A E01	T	S	N
9.50	14.63	10	4	10-053-003 0A E01	T	S	N
11.25	16.38	12	5	10-053-004 0A E01	T	S	N
13.00	18.13	14	6	10-053-005 0A E01	T	S	N
14.75	19.88	16	7	10-053-006 0A E01	T	S	N
16.50	21.63	18	8	10-053-007 0A E01	T	S	N
18.25	23.38	20	9	10-053-008 0A E01	T	S	N

NOTES:  
 1. ALL UNSPECIFIED RADII TO BE R0.125  
 2. ALL CONTACT SURFACES TO BE CLEAN & FREE FROM FLASH

MATERIAL:  
 1. E01 - BISPENOL-A EPOXY, GREY  
 2. C110 GRADE COPPER

SPECIFICATIONS:  
 1. BASIC IMPULSE LEVEL ..... 30KV AIR/AIR, 45KV AIR/OIL  
 2. MAXIMUM CURRENT RATING..... 4200 AMPS  
 3. TEMPERATURE CLASSIFICATION..... -50°C TO 155°C

0	
REVISIONS	
REF.	

UNLESS OTHERWISE SPECIFIED DIMENSIONS ARE IN INCHES. TOLERANCES ARE:  
 ONE PLACE MM ±0.50  
 TWO PLACE MM ±0.25  
 TWO PLACE DEC. ±0.020  
 THREE PLACE DEC. ±0.010  
 ANGLES ±1°

TEMPERATURE ±5°C  
 VOLTAGE ±5%  
 AMPERAGE ±5%  
 RESISTANCE ±5%

\* STATISTICAL DIMENSION  
 NO. OF SAMPLES [ 2 ]

CAD GENERATED DRAWING, DO NOT MANUALLY UPDATE.

APPROVALS	DATE
DRAWN BY: DB	04/19/19
CHECKED BY:	
ENGINEERING	

TOOLING REF. T10-053  
 PRODUCT GROUP 1005 SERIES

ENGINEERED POWER COMPONENTS

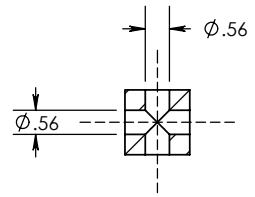
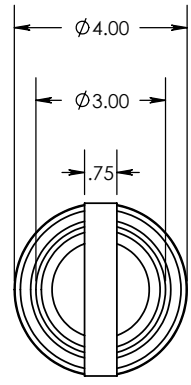
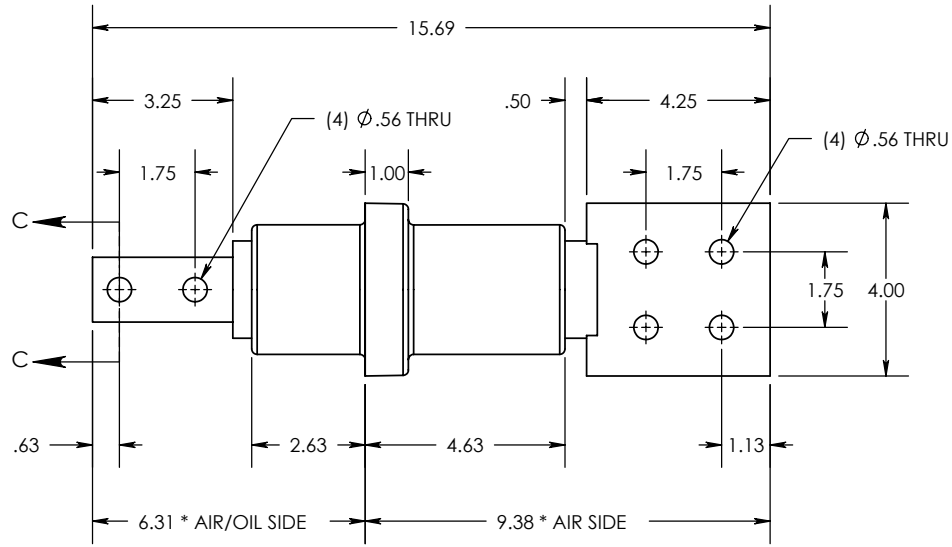
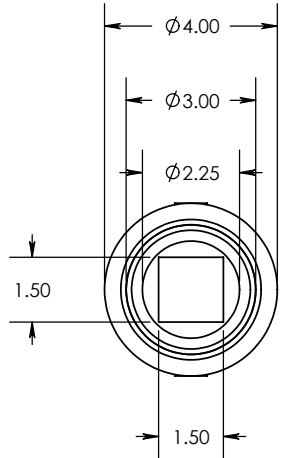
1005 SERIES  
 1.2 kV / 2.5 kV  
 LV BUSHING  
 4200 AMP (MAX.)

SIZE A	DWG. NO. 10-053-000	REV. 0
SCALE: 4	CAD FILE: 1000 SERIES	SHEET 1 OF 1

8 7 6 5 4 3 2 1

REV. 0  
 THE INFORMATION CONTAINED IN THIS DRAWING IS THE SOLE PROPERTY OF ENGINEERED POWER COMPONENTS LTD. ANY REPRODUCTION IN PART OR WHOLE WITHOUT THE WRITTEN PERMISSION OF ENGINEERED POWER COMPONENTS LTD. IS PROHIBITED.

CAD FILE: 1000 SERIES  
 DWG. NO. 10-053-009



SECTION C-C

NOTES:  
 1. ALL UNSPECIFIED RADII TO BE R0.125  
 2. ALL CONTACT SURFACES TO BE CLEAN & FREE FROM FLASH

MATERIAL:  
 1. E01 - BISPHENOL-A EPOXY, GREY  
 2. C110 GRADE COPPER

SPECIFICATIONS:  
 1. BASIC IMPULSE LEVEL ..... 30KV AIR/AIR, 45KV AIR/OIL  
 2. MAXIMUM CURRENT RATING..... 4200 AMPS  
 3. TEMPERATURE CLASSIFICATION..... -50°C TO 155°C

REVISIONS  
 REF.

0	
---	--

UNLESS OTHERWISE SPECIFIED DIMENSIONS ARE IN INCHES. TOLERANCES ARE:  
 ONE PLACE MM ±0.50  
 TWO PLACE MM ±0.25  
 TWO PLACE DEC. ±0.020  
 THREE PLACE DEC. ±0.010  
 ANGLES 1°  
 TEMPERATURE ±5°C  
 VOLTAGE ±5%  
 AMPERAGE ±5%  
 RESISTANCE ±5%

CAD GENERATED DRAWING, DO NOT MANUALLY UPDATE.  
 APPROVALS DATE  
 DRAWN BY: DB 10/28/1999  
 CHECKED BY:  
 ENGINEERING

1005 SERIES  
 1.2kV / 2.5kV  
 LV BUSHING  
 4200 AMP (MAX.)

\* STATISTICAL DIMENSION  
 NO. OF SAMPLES [ 2 ]

TOOLING REF. T10-053  
 PRODUCT GROUP 1005 SERIES

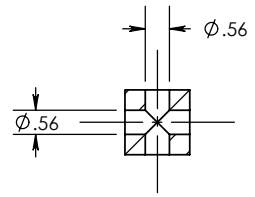
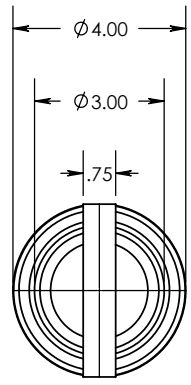
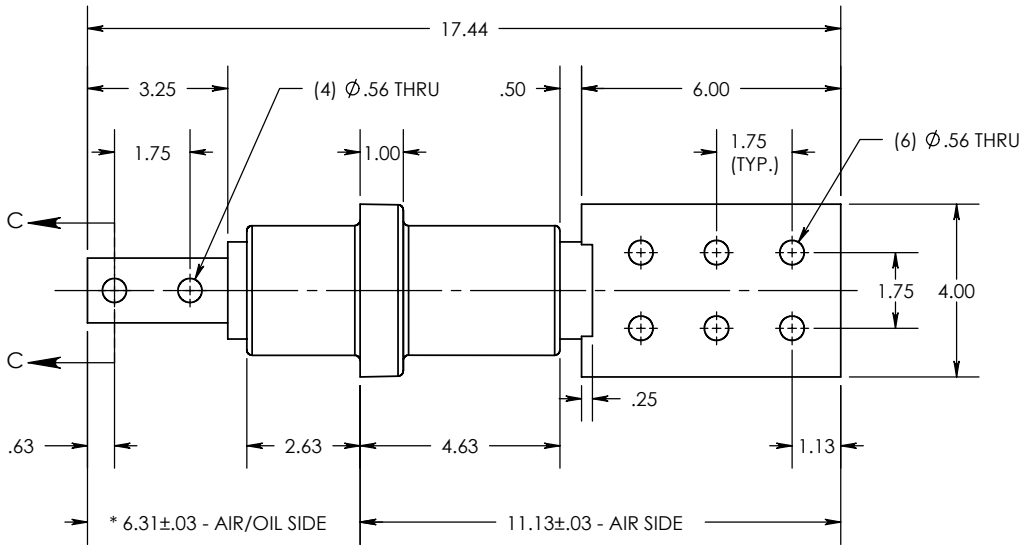
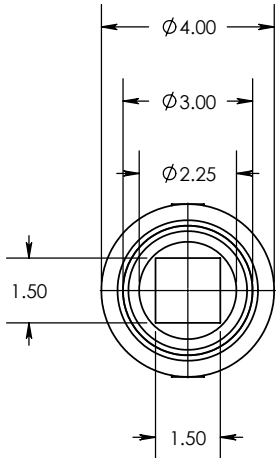
SIZE A DWG. NO. 10-053-009 REV. 0  
 SCALE: 4 CAD FILE: 1000 SERIES SHEET 1 OF 1

8 7 6 5 4 3 2 1

8 7 6 5 4 3 2 1

REV. 0  
 THE INFORMATION CONTAINED IN THIS DRAWING IS THE SOLE PROPERTY OF ENGINEERED POWER COMPONENTS LTD. ANY REPRODUCTION IN PART OR WHOLE WITHOUT THE WRITTEN PERMISSION OF ENGINEERED POWER COMPONENTS LTD. IS PROHIBITED.

CAD FILE: 1000 SERIES  
 DWG. NO. 10-053-010



SECTION C-C

NOTES:  
 1. ALL UNSPECIFIED RADII TO BE R0.125  
 2. ALL CONTACT SURFACES TO BE CLEAN & FREE FROM FLASH

MATERIAL:  
 1. E01 - BISPENOL-A EPOXY, GREY  
 2. HD ETP C11000 GRADE COPPER, TIN PLATED

SPECIFICATIONS:  
 1. BASIC IMPULSE LEVEL ..... 30KV AIR/AIR, 45KV AIR/OIL  
 2. MAXIMUM CURRENT RATING..... 4200 AMPS  
 3. TEMPERATURE CLASSIFICATION..... -50°C TO 155°C

REVISIONS  
 0

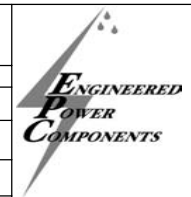
REF.	
------	--

UNLESS OTHERWISE SPECIFIED DIMENSIONS ARE IN INCHES. TOLERANCES ARE:  
 ONE PLACE MM ±0.50  
 TWO PLACE MM ±0.25  
 TWO PLACE DEC. ±0.020  
 THREE PLACE DEC. ±0.010  
 ANGLES 1°  
 TEMPERATURE ±5°C  
 VOLTAGE ±5%  
 AMPERAGE ±5%  
 RESISTANCE ±5%

\* STATISTICAL DIMENSION  
 NO. OF SAMPLES [ 2 ]

CAD GENERATED DRAWING, DO NOT MANUALLY UPDATE.

APPROVALS	DATE
DRAWN BY: DB	24/04/2000
CHECKED BY: RM	25/04/2000
ENGINEERING DB	25/04/2000
TOOLING REF.	T10-053
PRODUCT GROUP	1005 SERIES



1005 SERIES  
 1.2kV / 2.5kV  
 LV BUSHING  
 4200 AMP (MAX.)

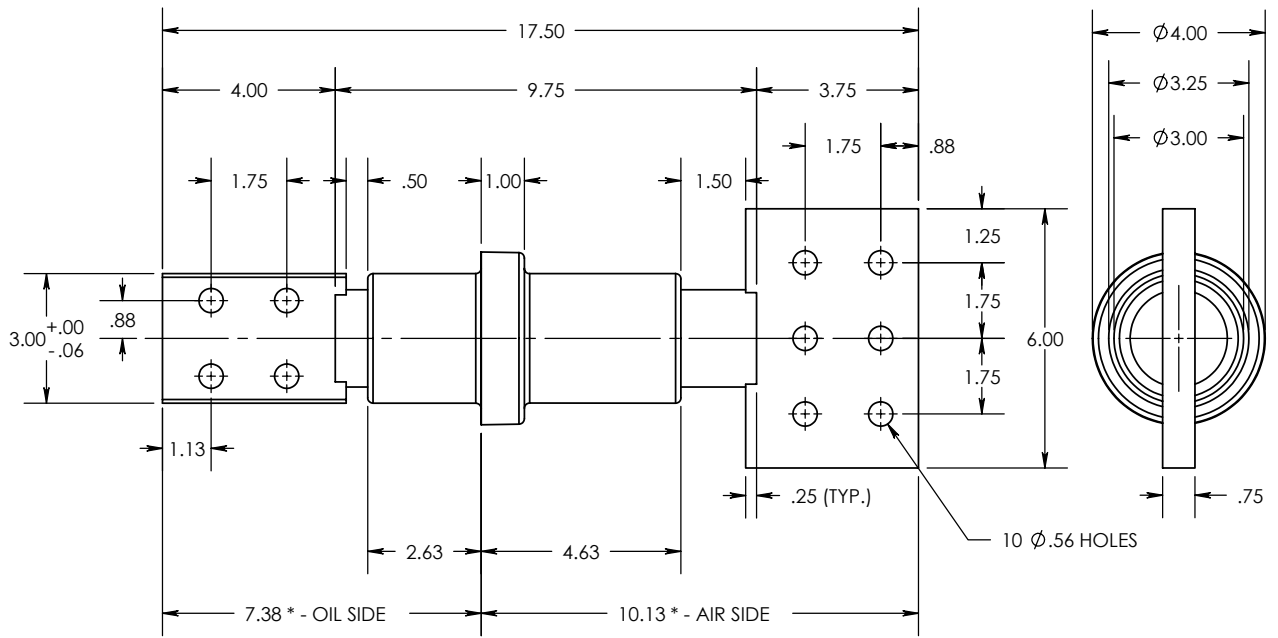
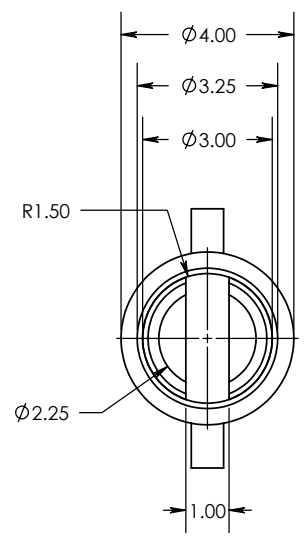
SIZE A	DWG. NO. 10-053-010	REV. 0
SCALE: 4	CAD FILE: 1000 SERIES	SHEET 1 OF 1

8 7 6 5 4 3 2 1

8 7 6 5 4 3 2 1

REV. 1  
 THE INFORMATION CONTAINED IN THIS DRAWING IS THE SOLE PROPERTY OF ENGINEERED POWER COMPONENTS LTD. ANY REPRODUCTION IN PART OR WHOLE WITHOUT THE WRITTEN PERMISSION OF ENGINEERED POWER COMPONENTS LTD. IS PROHIBITED.

DWG. NO. 10-053-011  
 CAD FILE: 1000 SERIES



NOTES:  
 1. ALL UNSPECIFIED RADII TO BE R0.125  
 2. ALL CONTACT SURFACES TO BE CLEAN & FREE FROM FLASH

MATERIAL:  
 1. E01 - BISPHENOL-A EPOXY, GREY  
 2. C110 GRADE COPPER

SPECIFICATIONS:  
 1. BASIC IMPULSE LEVEL ..... 30KV AIR/AIR, 45KV AIR/OIL  
 2. MAXIMUM CURRENT RATING..... 4200 AMPS  
 3. TEMPERATURE CLASSIFICATION..... -50°C TO 155°C

REVISIONS	0
	1
AIR SIDE DIM. WAS 9.13 DB 05-28-2001	
REF.	B4

UNLESS OTHERWISE SPECIFIED DIMENSIONS ARE IN INCHES. TOLERANCES ARE:  
 ONE PLACE MM ±0.50  
 TWO PLACE MM ±0.25  
 TWO PLACE DEC. ±0.020  
 THREE PLACE DEC. ±0.010  
 ANGLES 1°  
 TEMPERATURE ±5°C  
 VOLTAGE ±5%  
 AMPERAGE ±5%  
 RESISTANCE ±5%

CAD GENERATED DRAWING, DO NOT MANUALLY UPDATE.	
APPROVALS	DATE
DRAWN BY: DB	05/04/2001
CHECKED BY:	
ENGINEERING	

1005 SERIES  
 1.2kV / 2.5kV  
 LV BUSHING  
 4200 AMP (MAX.)

\* STATISTICAL DIMENSION  
 NO. OF SAMPLES [ 2 ]

TOOLING REF.	T10-053
PRODUCT GROUP	1005 SERIES

SIZE A	DWG. NO. 10-053-011	REV. 1
SCALE] : 4	CAD FILE: 1000 SERIES	SHEET 1 OF 1

8 7 6 5 4 3 2 1