

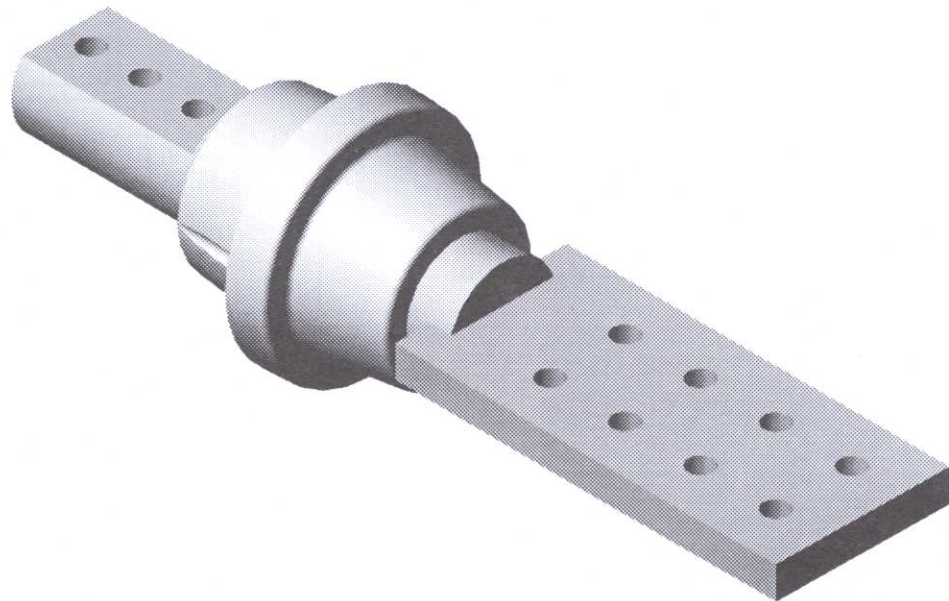
1004 SERIES

TRANSFORMER MOUNTED SECONDARY LV BUSHINGS

1.2 kV, 30 kV BIL (AIR/OIL)

CONDUCTIVITY: 99.99%

CURRENT RATING: 5000 AMP (MAX.)



USE:

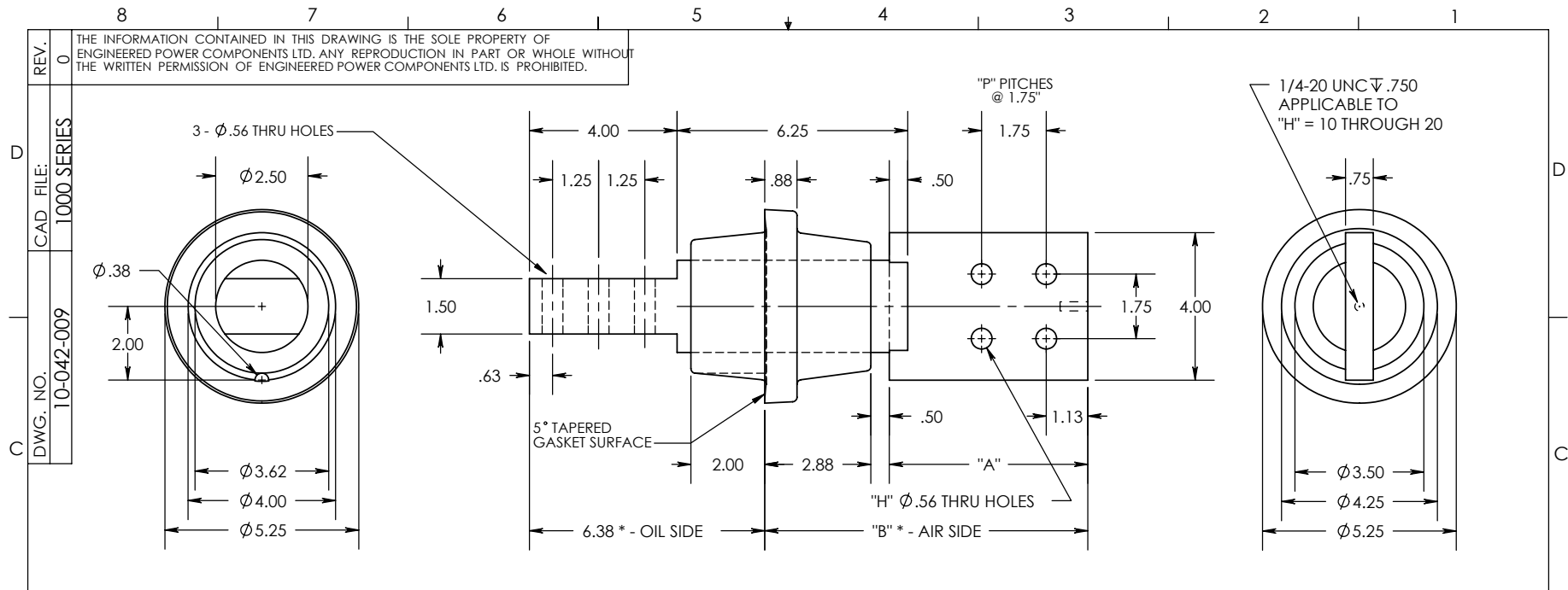
1004 Series Transformer Mounted LV Bushings are designed for use as secondary bushings in liquid filled transformer applications. Units are available for both outdoor (UV exposed) and enclosed applications. The 1004 Series bushing is designed for use in ambient temperatures ranging from -50°C to 155°C. Current ratings are based on 65°C rise above ambient and are typical for sidewall mounting with shanks below oil level. Current carrying capacity is affected by mounting and termination methods.

CONSTRUCTION:

1004 Series Secondary Bushings are constructed of C110 electrolytic grade copper with silver brazed connections for maximum conductivity. Insulation is Bis-A cast epoxy for enclosed applications. Outdoor units are supplied with Cycloaliphatic epoxy material. 1004 Series bushings are designed for external clamping applications.

CUSTOM OPTIONS:

1004 Series Secondary Bushings are easily customized for non-standard applications. Spade and stud options can be adapted to suit customer requirements for easy installation in existing equipment.



PRODUCT SELECTION GUIDE

TERMINAL STYLE (AIR SIDE)				PART NUMBERS	PLATING TYPES		
"A"	"B"	"H"	"P"		TIN	SILVER	NONE
5.38	8.75	4	1	10-042-009 0A E01	T	S	N
7.13	10.50	6	2	10-042-010 0A E01	T	S	N
8.88	12.25	8	3	10-042-011 0A E01	T	S	N
10.63	14.00	10	4	10-042-012 0A E01	T	S	N
12.38	15.75	12	5	10-042-013 0A E01	T	S	N
14.13	17.50	14	6	10-042-014 0A E01	T	S	N
15.88	19.25	16	7	10-042-015 0A E01	T	S	N
17.63	21.00	18	8	10-042-016 0A E01	T	S	N
19.38	22.75	20	9	10-042-017 0A E01	T	S	N

NOTES:

1. ALL UNSPECIFIED RADII TO BE R0.125
2. ALL CONTACT SURFACES TO BE CLEAN & FREE FROM FLASH

MATERIAL:

1. BISPHENOL-A EPOXY
2. C110 GRADE COPPER

SPECIFICATIONS:

1. BASIC IMPULSE LEVEL 30KV
2. MAXIMUM CURRENT RATING..... 5000 AMPS
3. TEMPERATURE CLASSIFICATION..... -50°C TO 155°C

A	REVISIONS	0
	REF.	

UNLESS OTHERWISE SPECIFIED DIMENSIONS ARE IN INCHES. TOLERANCES ARE:

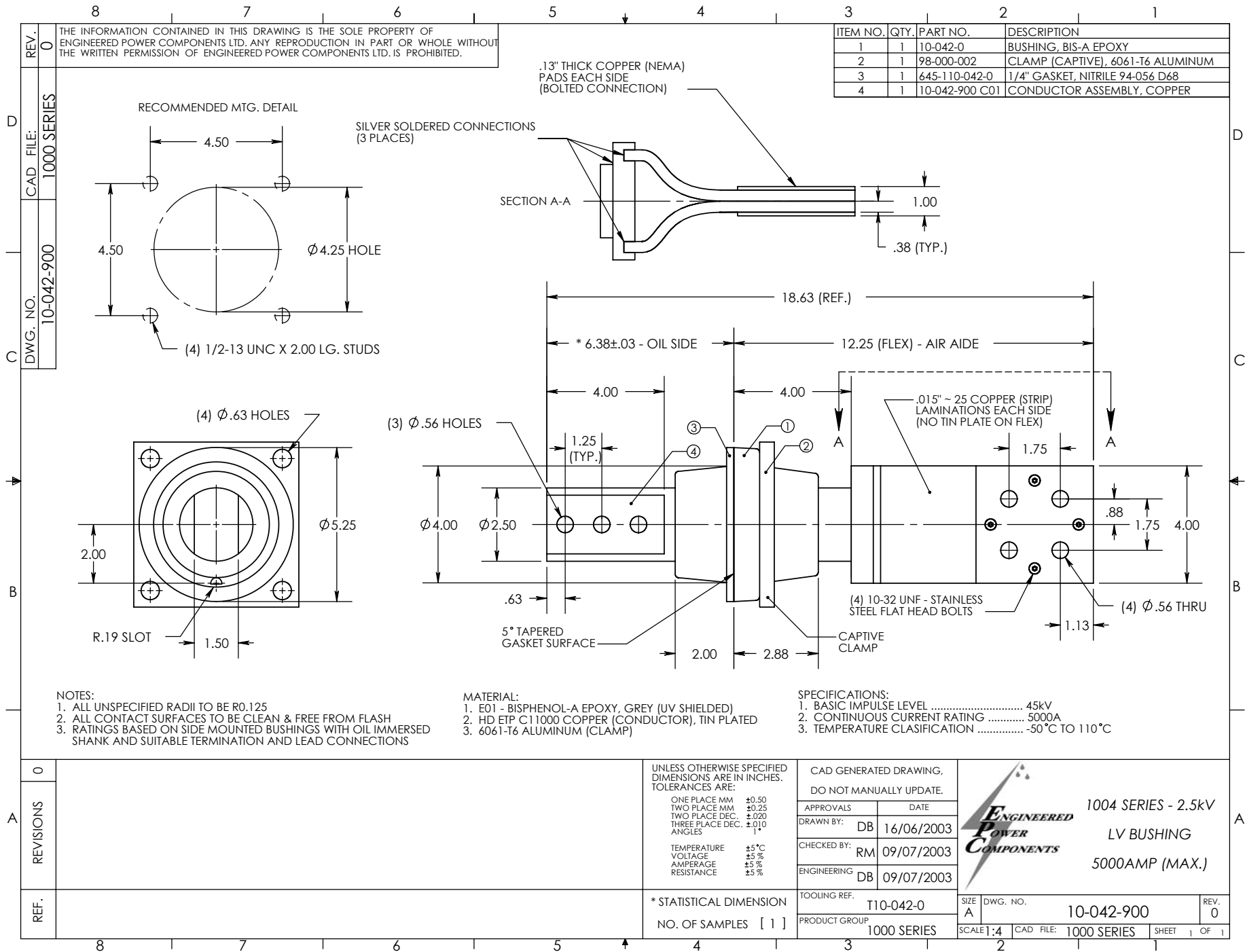
ONE PLACE MM	±0.50
TWO PLACE MM	±0.25
TWO PLACE DEC.	±0.020
THREE PLACE DEC.	±0.010
ANGLES	±1°
TEMPERATURE	±5°C
VOLTAGE	±5%
AMPERAGE	±5%
RESISTANCE	±5%

* STATISTICAL DIMENSION
NO. OF SAMPLES [2]

CAD GENERATED DRAWING, DO NOT MANUALLY UPDATE.	
APPROVALS	DATE
DRAWN BY: DB	24/05/19
CHECKED BY:	
ENGINEERING	
TOOLING REF. T10-042	SIZE A
PRODUCT GROUP 1004 SERIES	DWG. NO. 10-042-009

1004 SERIES - 1.2KV
LV BUSHING
5000 AMP (MAX.)

SCALE: 4	CAD FILE: 1000 SERIES	SHEET 1 OF 1
----------	-----------------------	--------------



ITEM NO.	QTY.	PART NO.	DESCRIPTION
1	1	10-042-0	BUSHING, BIS-A EPOXY
2	1	98-000-002	CLAMP (CAPTIVE), 6061-T6 ALUMINUM
3	1	645-110-042-0	1/4" GASKET, NITRILE 94-056 D68
4	1	10-042-900 C01	CONDUCTOR ASSEMBLY, COPPER

NOTES:
 1. ALL UNSPECIFIED RADII TO BE R0.125
 2. ALL CONTACT SURFACES TO BE CLEAN & FREE FROM FLASH
 3. RATINGS BASED ON SIDE MOUNTED BUSHINGS WITH OIL IMMERSED SHANK AND SUITABLE TERMINATION AND LEAD CONNECTIONS

MATERIAL:
 1. E01 - BISPHENOL-A EPOXY, GREY (UV SHIELDED)
 2. HD ETP C11000 COPPER (CONDUCTOR), TIN PLATED
 3. 6061-T6 ALUMINUM (CLAMP)

SPECIFICATIONS:
 1. BASIC IMPULSE LEVEL 45kV
 2. CONTINUOUS CURRENT RATING 5000A
 3. TEMPERATURE CLASSIFICATION -50°C TO 110°C

UNLESS OTHERWISE SPECIFIED DIMENSIONS ARE IN INCHES. TOLERANCES ARE:	
ONE PLACE MM	±0.50
TWO PLACE MM	±0.25
TWO PLACE DEC.	±0.020
THREE PLACE DEC.	±0.010
ANGLES	1°
TEMPERATURE	±5 °C
VOLTAGE	±5 %
AMPERAGE	±5 %
RESISTANCE	±5 %
* STATISTICAL DIMENSION	
NO. OF SAMPLES [1]	
CAD GENERATED DRAWING, DO NOT MANUALLY UPDATE.	
APPROVALS	DATE
DRAWN BY: DB	16/06/2003
CHECKED BY: RM	09/07/2003
ENGINEERING: DB	09/07/2003
TOOLING REF.	T10-042-0
PRODUCT GROUP	1000 SERIES

ENGINEERED POWER COMPONENTS

1004 SERIES - 2.5kV
LV BUSHING
5000AMP (MAX.)

SIZE A	DWG. NO. 10-042-900	REV. 0
SCALE: 4	CAD FILE: 1000 SERIES	SHEET 1 OF 1