



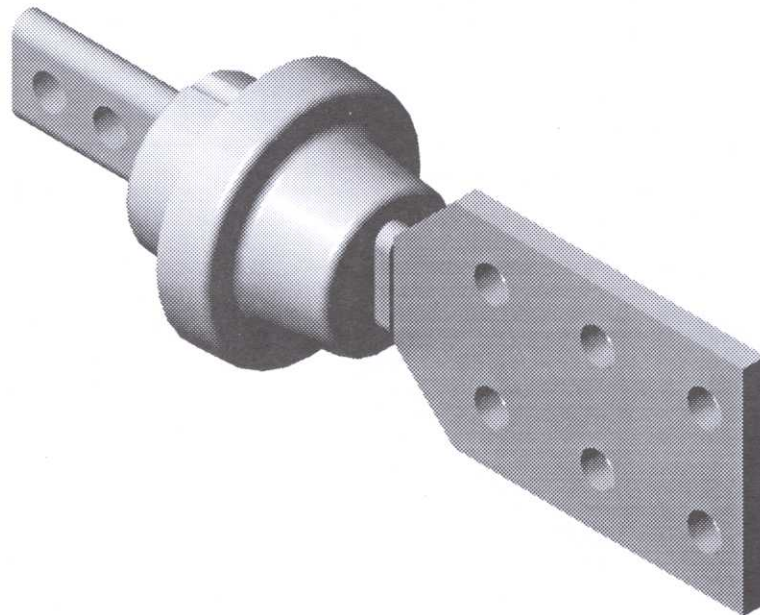
1002 SERIES

TRANSFORMER MOUNTED SECONDARY LV BUSHINGS

1.2 kV, 30 kV BIL (AIR/OIL)

CONDUCTIVITY: 99.99%

CURRENT RATING: 1100 AMP (MAX.)



USE:

1002 Series Transformer Mounted LV Bushings are designed for use as secondary bushings in liquid filled transformer applications. Units are available for both outdoor (UV exposed) and enclosed applications. The 1002 Series bushing is designed for use in ambient temperatures ranging from -50°C to 155°C. Current ratings are based on 65°C rise above ambient and are typical for sidewall mounting with shanks below oil level. Current carrying capacity is affected by mounting and termination methods.

CONSTRUCTION:

1002 Series Secondary Bushings are constructed of C110 electrolytic grade copper with silver brazed connections for maximum conductivity. Insulation is Bis-A cast epoxy for enclosed applications. Outdoor units are supplied with Cycloaliphatic epoxy material. 1002 Series bushings are designed for external clamping applications.

CUSTOM OPTIONS:

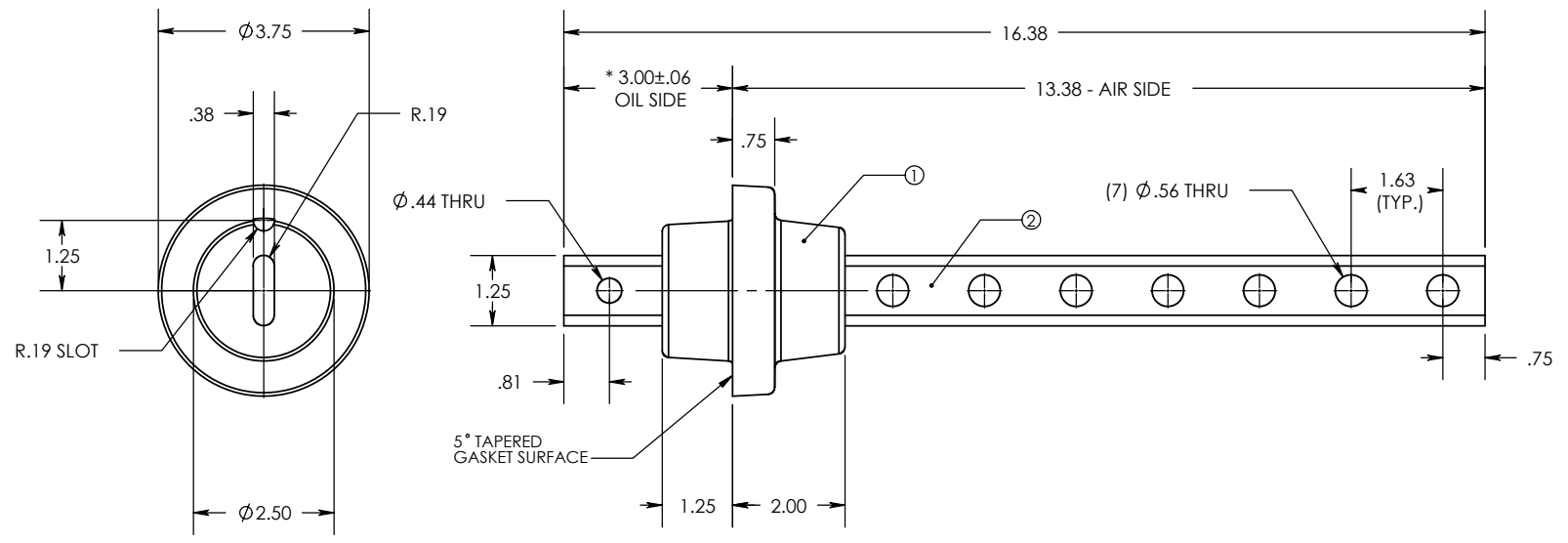
1002 Series Secondary Bushings are easily customized for non-standard applications. Spade and stud options can be adapted to suit customer requirements for easy installation in existing equipment.

8 7 6 5 4 3 2 1

REV. 0
 THE INFORMATION CONTAINED IN THIS DRAWING IS THE SOLE PROPERTY OF ENGINEERED POWER COMPONENTS LTD. ANY REPRODUCTION IN PART OR WHOLE WITHOUT THE WRITTEN PERMISSION OF ENGINEERED POWER COMPONENTS LTD. IS PROHIBITED.

ITEM NO.	QTY.	PART NO.	DESCRIPTION
1	1	10-025	BODY, BIS-A EPOXY
2	1	10-025-010 A01	STUD, COPPER

D
 CAD FILE: 1000 SERIES
 C
 DWG. NO. 10-025-010



NOTES:
 1. ALL UNSPECIFIED RADII TO BE R0.125
 2. ALL CONTACT SURFACES TO BE CLEAN & FREE FROM FLASH
 3. RATINGS BASED ON SIDE MOUNTED BUSHINGS WITH OIL IMMERSED SHANK AND SUITABLE TERMINATION AND LEAD CONNECTIONS

MATERIAL:
 1. E01 - BISPHENOL-A EPOXY, GREY (UV SHIELDED)
 2. HD ETP C11000 COPPER (CONDUCTOR), TIN PLATED

SPECIFICATIONS:
 1. BASIC IMPULSE LEVEL 30KV
 2. MAXIMUM CURRENT RATING..... 600 AMPS
 3. TEMPERATURE CLASSIFICATION..... -50°C TO 110°C

A
 REVISIONS
 REF.

REV.	DESCRIPTION
0	

UNLESS OTHERWISE SPECIFIED DIMENSIONS ARE IN INCHES. TOLERANCES ARE:	
ONE PLACE MM	±0.50
TWO PLACE MM	±0.25
TWO PLACE DEC.	±0.020
THREE PLACE DEC.	±0.010
ANGLES	1°
TEMPERATURE	±5 °C
VOLTAGE	±5 %
AMPERAGE	±5 %
RESISTANCE	±5 %
* STATISTICAL DIMENSION NO. OF SAMPLES [1]	

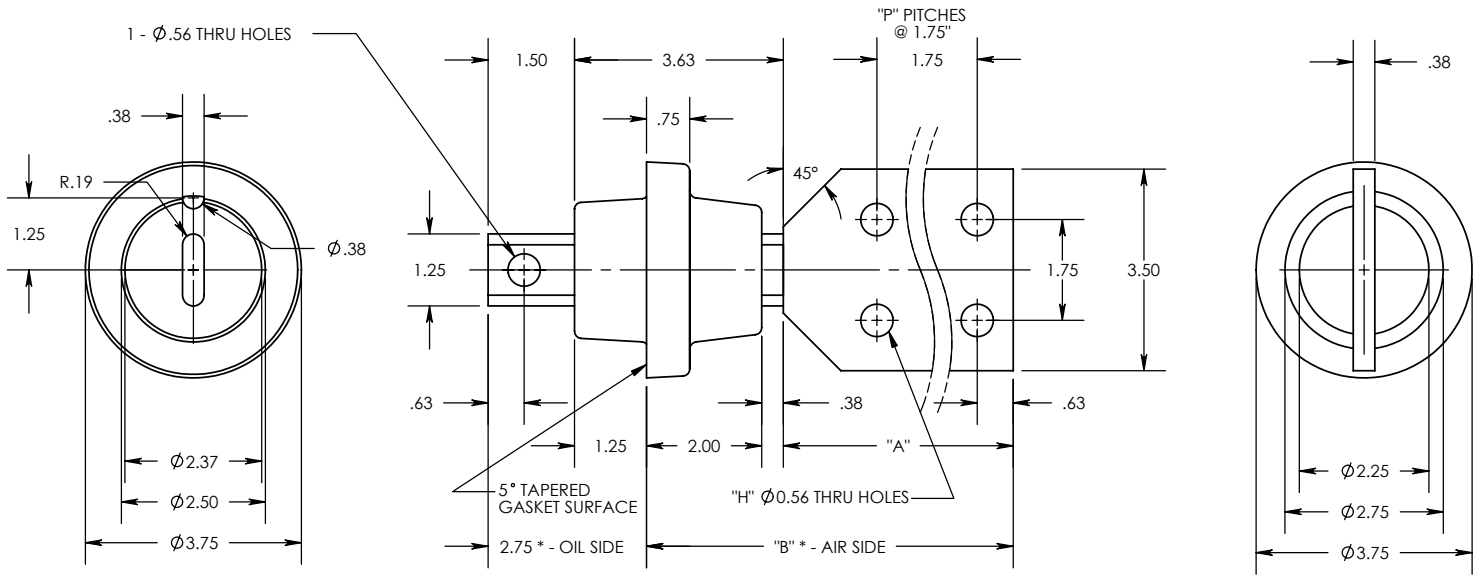
CAD GENERATED DRAWING, DO NOT MANUALLY UPDATE.			1.2kV / 600A	
APPROVALS	DATE		SECONDARY BUSHING	
DRAWN BY: DB	20/06/2003		(COPPER CONDUCTOR)	
CHECKED BY: ---	---			
ENGINEERING	---			A
TOOLING REF. T10-025-0	SIZE A	DWG. NO. 10-025-010	REV. 0	
PRODUCT GROUP 1000 SERIES	SCALE 1:3	CAD FILE: 1000 SERIES	SHEET 1 OF 1	

8 7 6 5 4 3 2 1

8 7 6 5 4 3 2 1

REV. 0
 THE INFORMATION CONTAINED IN THIS DRAWING IS THE SOLE PROPERTY OF ENGINEERED POWER COMPONENTS LTD. ANY REPRODUCTION IN PART OR WHOLE WITHOUT THE WRITTEN PERMISSION OF ENGINEERED POWER COMPONENTS LTD. IS PROHIBITED.

CAD FILE: 1000 SERIES
 DWG. NO. 10-025-000




NOTES:
 1. ALL UNSPECIFIED RADII TO BE R0.125
 2. ALL CONTACT SURFACES TO BE CLEAN & FREE FROM FLASH

MATERIAL:
 1. E01 - BISPENOL-A EPOXY, GREY
 2. C110 GRADE COPPER

SPECIFICATIONS:
 1. BASIC IMPULSE LEVEL 30KV
 2. MAXIMUM CURRENT RATING..... 800 AMPS
 3. TEMPERATURE CLASSIFICATION..... -50°C TO 155°C

PRODUCT SELECTION GUIDE								
TERMINAL STYLE (AIR SIDE)				PART NUMBERS	PLATING TYPES			
"A"	"B"	"H"	"P"		TIN	SILVER	NONE	
4.00	6.38	4	1	10-025-000 0A E01	T	S	N	
5.75	8.13	6	2	10-025-001 0A E01	T	S	N	
7.50	9.88	8	3	10-025-002 0A E01	T	S	N	

REVISIONS
 0

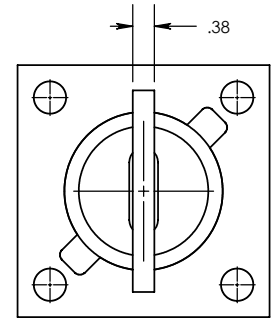
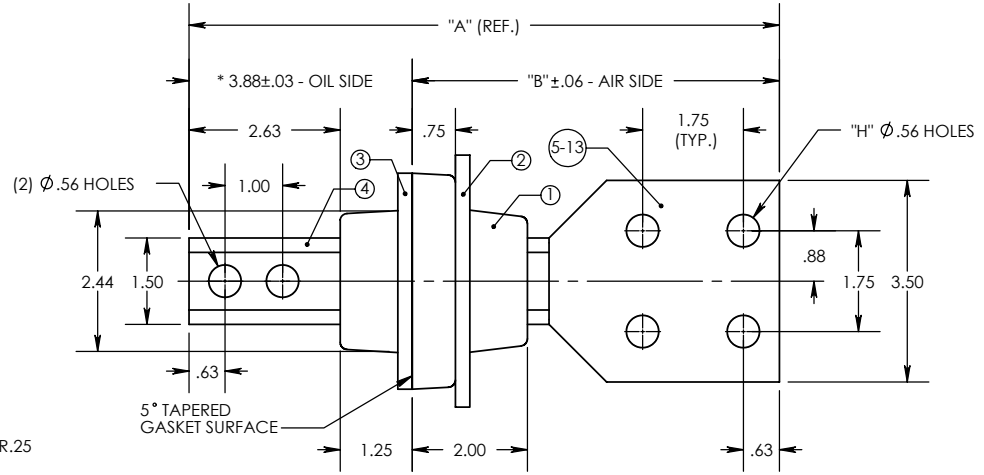
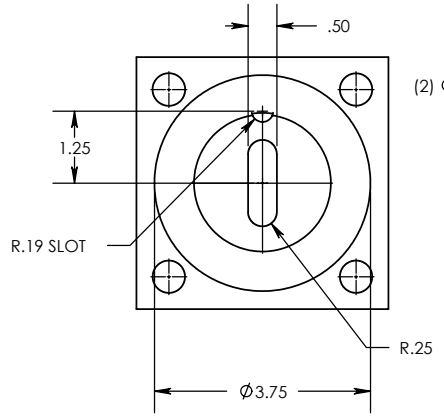
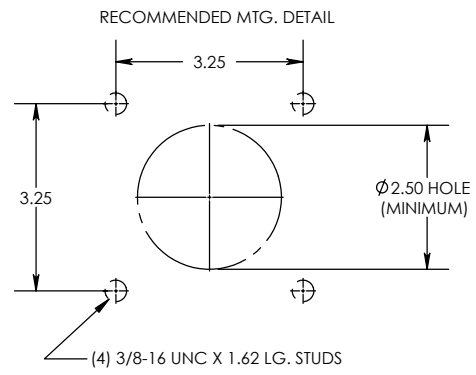
UNLESS OTHERWISE SPECIFIED DIMENSIONS ARE IN INCHES. TOLERANCES ARE: ONE PLACE MM ±0.50 TWO PLACE MM ±0.25 TWO PLACE DEC. ±0.020 THREE PLACE DEC. ±0.010 ANGLES 1° TEMPERATURE ±5°C VOLTAGE ±5% AMPERAGE ±5% RESISTANCE ±5%	CAD GENERATED DRAWING, DO NOT MANUALLY UPDATE.		 1002 SERIES - 1.2 kV LV BUSHING 800 AMP (MAX.)
	APPROVALS	DATE	
* STATISTICAL DIMENSION NO. OF SAMPLES [2]	DRAWN BY: DB	04/11/1999	SIZE A DWG. NO. 10-025-000 SCALE: 3 SHEET 1 OF 1
	CHECKED BY: RM	04/11/1999	
	ENGINEERING DB	04/11/1999	
	TOOLING REF. T10-025		
	PRODUCT GROUP 1002 SERIES		

8 7 6 5 4 3 2 1

8 7 6 5 4 3 2 1

REV. 2
 THE INFORMATION CONTAINED IN THIS DRAWING IS THE SOLE PROPERTY OF ENGINEERED POWER COMPONENTS LTD. ANY REPRODUCTION IN PART OR WHOLE WITHOUT THE WRITTEN PERMISSION OF ENGINEERED POWER COMPONENTS LTD. IS PROHIBITED.

ITEM NO.	QTY.	PART NO.	DESCRIPTION	EPC PART NO.	DIM "A"	DIM "B"	"H"
1	1	10-023-0	BUSHING, BIS-A EPOXY				
2	1	98-000-000	1/4" CLAMP, ALUMINUM				
3	1	645-110-021-0	1/4" GASKET, NITRILE 94-056 D68				
4	1	10-023-000 A01	STUD, 2-HOLE, COPPER				
5	1	10-014-000 A02	SPADE (EXT) 4-HOLE, COPPER	10-023-000 2A E01T	10.26	6.38	4
6	1	10-014-001 A02	SPADE (EXT) 6-HOLE, COPPER	10-023-001 2A E01T	12.01	8.13	6
7	1	10-014-002 A02	SPADE (EXT) 8-HOLE, COPPER	10-023-002 2A E01T	13.76	9.88	8
8	1	10-014-003 A02	SPADE (EXT) 10-HOLE, COPPER	10-023-003 2A E01T	15.51	11.63	10
9	1	10-014-004 A02	SPADE (EXT) 12-HOLE, COPPER	10-023-004 2A E01T	17.26	13.38	12
10	1	10-014-005 A02	SPADE (EXT) 14-HOLE, COPPER	10-023-005 2A E01T	19.01	15.13	14
11	1	10-014-006 A02	SPADE (EXT) 16-HOLE, COPPER	10-023-006 2A E01T	20.76	16.88	16
12	1	10-014-007 A02	SPADE (EXT) 18-HOLE, COPPER	10-023-007 2A E01T	22.51	18.63	18
13	1	10-014-008 A02	SPADE (EXT) 20-HOLE, COPPER	10-023-008 2A E01T	24.26	20.38	20



NOTES:

1. ALL UNSPECIFIED RADII TO BE R0.125
2. ALL CONTACT SURFACES TO BE CLEAN & FREE FROM FLASH
3. RATINGS BASED ON SIDE MOUNTED BUSHINGS WITH OIL IMMERSED SHANK AND SUITABLE TERMINATION AND LEAD CONNECTIONS

MATERIAL:

1. E01 - BISPHENOL-A EPOXY, GREY
2. HD ETP C11000 COPPER (CONDUCTOR), TIN PLATED

SPECIFICATIONS:

1. BASIC IMPULSE LEVEL 30KV
2. CURRENT RATING..... 800 TO 1100 AMPS
3. TEMPERATURE CLASSIFICATION..... -50°C TO 110°C

REV.	DESCRIPTION	DATE
0		
1	ADDED MOUNTING DETAIL	DB 08-31-2000
2	CHANGED DWG. FORMAT	BM 03/01/2003 DB 03/01/2003

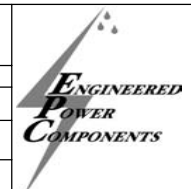
UNLESS OTHERWISE SPECIFIED DIMENSIONS ARE IN INCHES. TOLERANCES ARE:

ONE PLACE MM ±0.50
 TWO PLACE MM ±0.25
 TWO PLACE DEC. ±0.020
 THREE PLACE DEC. ±0.010
 ANGLES 1°

TEMPERATURE ±5°C
 VOLTAGE ±5%
 AMPERAGE ±5%
 RESISTANCE ±5%

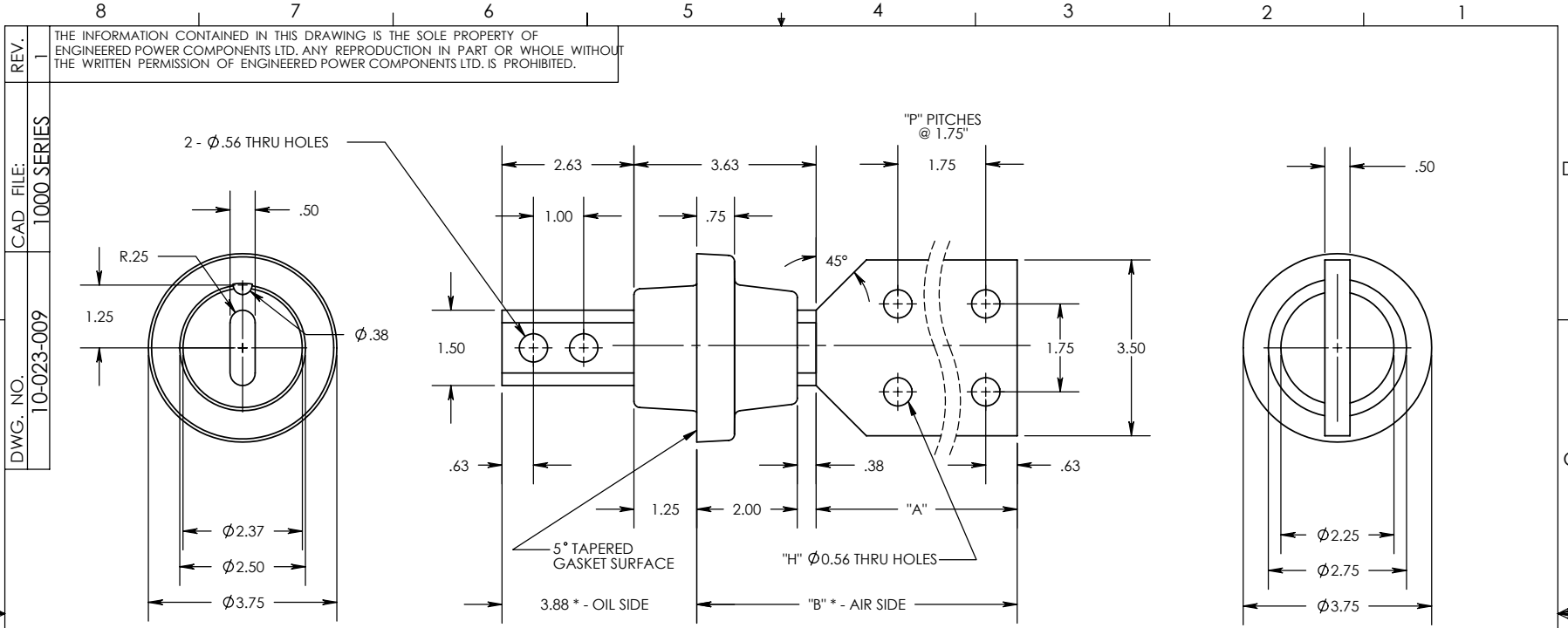
CAD GENERATED DRAWING, DO NOT MANUALLY UPDATE.

APPROVALS	DATE
DRAWN BY: DB	18/05/1999
CHECKED BY: RM	18/05/1999
ENGINEERING DB	18/05/1999



1.2 kV / 1100A
 SECONDARY BUSHING
 (COPPER CONDUCTOR)

REF.		* STATISTICAL DIMENSION NO. OF SAMPLES [2]	TOOLING REF. T10-023	SIZE A	DWG. NO. 10-023-000	REV. 2
			PRODUCT GROUP 1000 SERIES	SCALE 1:3	CAD FILE: 1000 SERIES	SHEET 1 OF 1



REV. 1
 DWG. NO. 10-023-009
 CAD FILE: 1000 SERIES

THE INFORMATION CONTAINED IN THIS DRAWING IS THE SOLE PROPERTY OF ENGINEERED POWER COMPONENTS LTD. ANY REPRODUCTION IN PART OR WHOLE WITHOUT THE WRITTEN PERMISSION OF ENGINEERED POWER COMPONENTS LTD. IS PROHIBITED.

NOTES:
 1. ALL UNSPECIFIED RADII TO BE R0.125
 2. ALL CONTACT SURFACES TO BE CLEAN & FREE FROM FLASH

MATERIAL:
 1. E01 - BISPHENOL-A EPOXY, GREY
 2. C110 GRADE COPPER

SPECIFICATIONS:
 1. BASIC IMPULSE LEVEL 30KV
 2. MAXIMUM CURRENT RATING..... 1300 AMPS
 3. TEMPERATURE CLASSIFICATION..... -50°C TO 155°C

PRODUCT SELECTION GUIDE								
TERMINAL STYLE (AIR SIDE)				PART NUMBERS	PLATING TYPES			
"A"	"B"	"H"	"P"		TIN	SILVER	NONE	
4.00	6.38	4	1	10-023-009 1A E01	T	S	N	
5.75	8.13	6	2	10-023-010 1A E01	T	S	N	
7.50	9.88	8	3	10-023-011 1A E01	T	S	N	

0	1
REVISIONS	RATING WAS 1100A DB 12/05/2000

UNLESS OTHERWISE SPECIFIED DIMENSIONS ARE IN INCHES. TOLERANCES ARE:
 ONE PLACE MM ± 0.50
 TWO PLACE MM ± 0.25
 TWO PLACE DEC. ± 0.020
 THREE PLACE DEC. ± 0.010
 ANGLES 1°
 TEMPERATURE $\pm 5^\circ\text{C}$
 VOLTAGE $\pm 5\%$
 AMPERAGE $\pm 5\%$
 RESISTANCE $\pm 5\%$

CAD GENERATED DRAWING, DO NOT MANUALLY UPDATE.	
APPROVALS	DATE
DRAWN BY: DB	03/11/1999
CHECKED BY: RM	12/05/2000
ENGINEERING DB	12/05/2000
TOOLING REF.	T10-023
PRODUCT GROUP	1002 SERIES

ENGINEERED POWER COMPONENTS

1002 SERIES - 1.2 kV
 LV BUSHING
 1300 AMP (MAX.)

SIZE A DWG. NO. 10-023-009
 SCALE 1:3 CAD FILE: 1000 SERIES SHEET 1 OF 1

* STATISTICAL DIMENSION
 NO. OF SAMPLES [2]