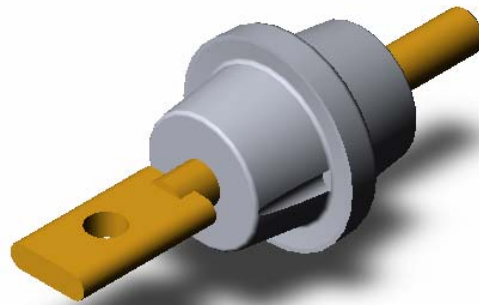


1001 Series Transformer Mounted Secondary LV Bushings

1.2 kV, 30 kV BIL (Air/Oil)
Conductivity: 99.99 %
Current Rating: 680 Amp to 1200 Amp



Use:

1001 Series Transformer Mounted LV Bushings are designed for use as secondary bushings in liquid filled transformer bushings. Units are available for both outdoor (UV exposed) and enclosed applications. The 1001 Series bushing is designed for use in ambient temperatures ranging from -50°C to 155°C and at a maximum continuous rating of 110°C. Current ratings are based on 65°C rise above ambient and are typical for sidewall mounting with shanks below oil level. Current carrying capacity is affected by mounting and termination methods.

Construction:

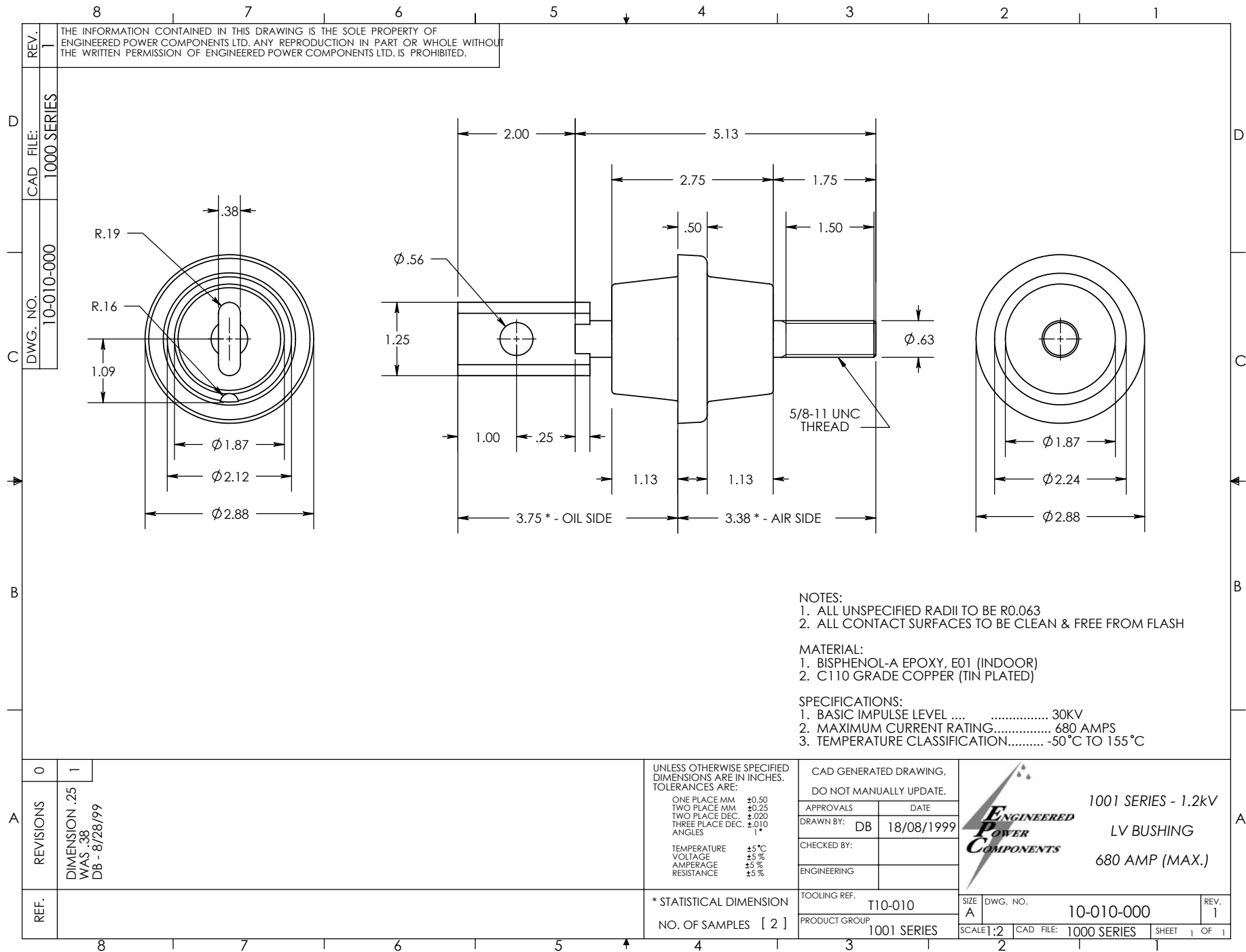
1001 Series Secondary Bushings are constructed of C110 electrolytic grade copper with silver brazed connections for maximum conductivity. Insulation is Bis-A cast epoxy for enclosed applications. Outdoor units are supplied with Cycloaliphatic epoxy material. 1001 Series bushings are designed for external clamping applications.

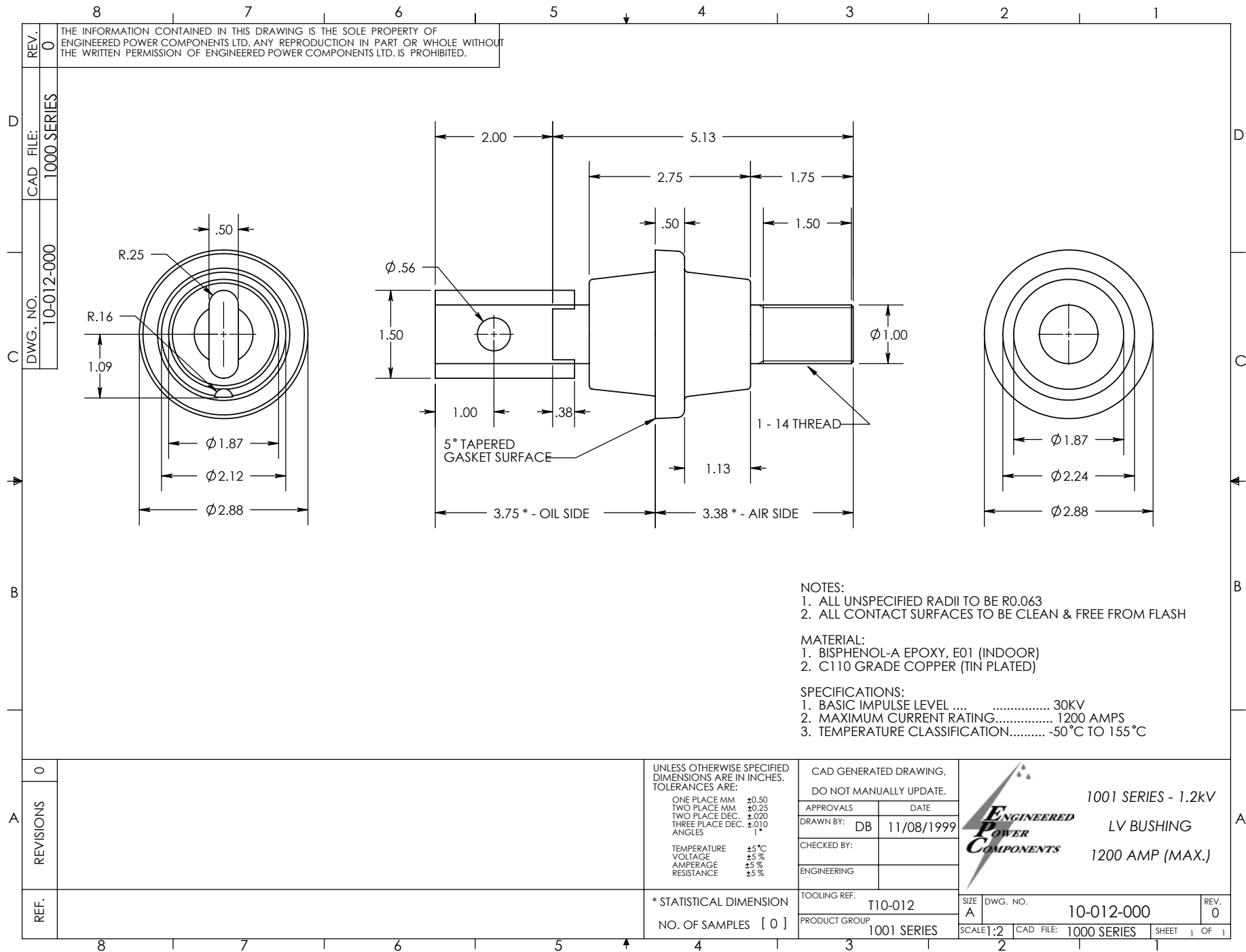
Custom Options:

1001 Series Secondary Bushings are easily customized for non-standard applications. Spade and stud options can be adapted to suit customer requirements for easy installation in existing equipment.

Engineered Power Components Ltd.
Unit E – 10 Keenleyside St.
Winnipeg, Manitoba, Canada
R2L 2B9

Phone: (204) 663-4195
Fax: (204) 663-5256
Toll Free: 1-888-416-8111
Email: sales@epclimited.com
Website: www.epclimited.com






REV. 0
 DWG. NO. 10-012-000
 CAD FILE: 1000 SERIES

THE INFORMATION CONTAINED IN THIS DRAWING IS THE SOLE PROPERTY OF ENGINEERED POWER COMPONENTS LTD. ANY REPRODUCTION IN PART OR WHOLE WITHOUT THE WRITTEN PERMISSION OF ENGINEERED POWER COMPONENTS LTD. IS PROHIBITED.

- NOTES:
 1. ALL UNSPECIFIED RADII TO BE R0.063
 2. ALL CONTACT SURFACES TO BE CLEAN & FREE FROM FLASH

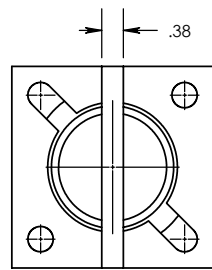
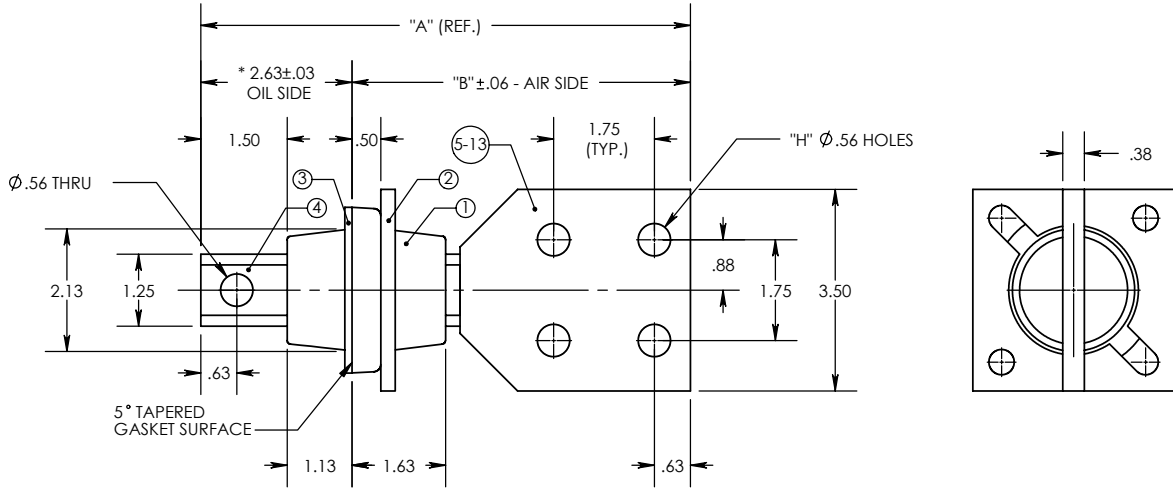
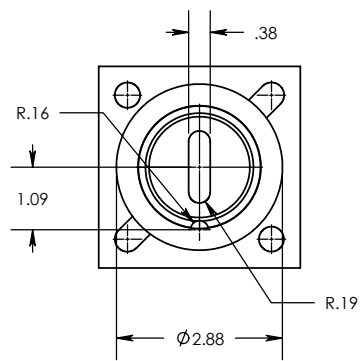
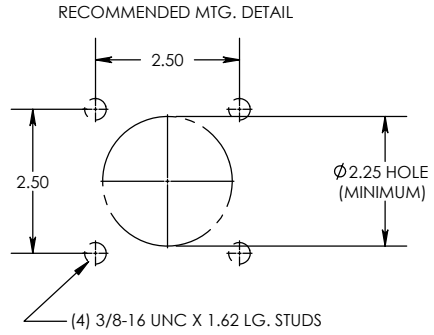
- MATERIAL:
 1. BISPHENOL-A EPOXY, E01 (INDOOR)
 2. C110 GRADE COPPER (TIN PLATED)

- SPECIFICATIONS:
 1. BASIC IMPULSE LEVEL 30KV
 2. MAXIMUM CURRENT RATING..... 1200 AMPS
 3. TEMPERATURE CLASSIFICATION..... -50 °C TO 155 °C

A	REVISIONS	0	UNLESS OTHERWISE SPECIFIED DIMENSIONS ARE IN INCHES. TOLERANCES ARE: ONE PLACE MM ±0.50 TWO PLACE MM ±0.25 TWO PLACE DEC. ±0.020 THREE PLACE DEC. ±0.010 ANGLES 1° TEMPERATURE ±5 °C VOLTAGE ±5 % AMPERAGE ±5 % RESISTANCE ±5 %	CAD GENERATED DRAWING, DO NOT MANUALLY UPDATE. APPROVALS _____ DATE _____ DRAWN BY: DB 11/08/1999 CHECKED BY: _____ ENGINEERING _____	 1001 SERIES - 1.2KV LV BUSHING 1200 AMP (MAX.)
	REF.				

THE INFORMATION CONTAINED IN THIS DRAWING IS THE SOLE PROPERTY OF ENGINEERED POWER COMPONENTS LTD. ANY REPRODUCTION IN PART OR WHOLE WITHOUT THE WRITTEN PERMISSION OF ENGINEERED POWER COMPONENTS LTD. IS PROHIBITED.

ITEM NO.	QTY.	PART NO.	DESCRIPTION	EPC PART NO.	DIM "A"	DIM "B"	"H"
1	1	10-014-0	BUSHING, BIS-A EPOXY				
2	1	98-000-018	1/4" CLAMP, ALUMINUM				
3	1	643-110-010-0	1/8" GASKET, NITRILE 94-056 D68				
4	1	10-014-000 A01	STUD, SINGLE HOLE, COPPER				
5	1	10-014-000 A02	SPADE (EXT) 4-HOLE, COPPER	10-014-000 1A E01T	8.50	5.88	4
6	1	10-014-001 A02	SPADE (EXT) 6-HOLE, COPPER	10-014-001 1A E01T	10.25	7.63	6
7	1	10-014-002 A02	SPADE (EXT) 8-HOLE, COPPER	10-014-002 1A E01T	12.00	9.38	8
8	1	10-014-003 A02	SPADE (EXT) 10-HOLE, COPPER	10-014-003 1A E01T	13.75	11.13	10
9	1	10-014-004 A02	SPADE (EXT) 12-HOLE, COPPER	10-014-004 1A E01T	15.50	12.88	12
10	1	10-014-005 A02	SPADE (EXT) 14-HOLE, COPPER	10-014-005 1A E01T	17.25	14.63	14
11	1	10-014-006 A02	SPADE (EXT) 16-HOLE, COPPER	10-014-006 1A E01T	19.00	16.38	16
12	1	10-014-007 A02	SPADE (EXT) 18-HOLE, COPPER	10-014-007 1A E01T	20.75	18.13	18
13	1	10-014-008 A02	SPADE (EXT) 20-HOLE, COPPER	10-014-008 1A E01T	22.50	19.88	20



NOTES:
 1. ALL UNSPECIFIED RADII TO BE R0.125
 2. ALL CONTACT SURFACES TO BE CLEAN & FREE FROM FLASH
 3. RATINGS BASED ON SIDE MOUNTED BUSHINGS WITH OIL IMMERSED SHANK AND SUITABLE TERMINATION AND LEAD CONNECTIONS

MATERIAL:
 1. E01 - BISPHENOL-A EPOXY, GREY
 2. HD ETP C11000 COPPER (CONDUCTOR), TIN PLATED

SPECIFICATIONS:
 1. BASIC IMPULSE LEVEL 30KV
 2. CURRENT RATING..... 800 AMPS
 3. TEMPERATURE CLASSIFICATION..... -50°C TO 110°C

REV.	0	1
REVISIONS		
CHANGEDWG. FORMAT		
RM 03/01/2003		
DB 03/01/2003		
REF.		

UNLESS OTHERWISE SPECIFIED DIMENSIONS ARE IN INCHES. TOLERANCES ARE:
 ONE PLACE MM ±0.50
 TWO PLACE MM ±0.25
 TWO PLACE DEC. ±0.020
 THREE PLACE DEC. ±0.010
 ANGLES 1°
 TEMPERATURE ±5°C
 VOLTAGE ±5%
 AMPERAGE ±5%
 RESISTANCE ±5%

CAD GENERATED DRAWING, DO NOT MANUALLY UPDATE.
 APPROVALS: DB 12/07/1999
 DRAWN BY: DB 12/07/1999
 CHECKED BY: RM 12/07/1999
 ENGINEERING: DB 12/07/1999



1.2 kV / 800A
 SECONDARY BUSHING
 (COPPER CONDUCTOR)

* STATISTICAL DIMENSION
 NO. OF SAMPLES [1]

TOOLING REF. T10-014-0
 PRODUCT GROUP 1000 SERIES

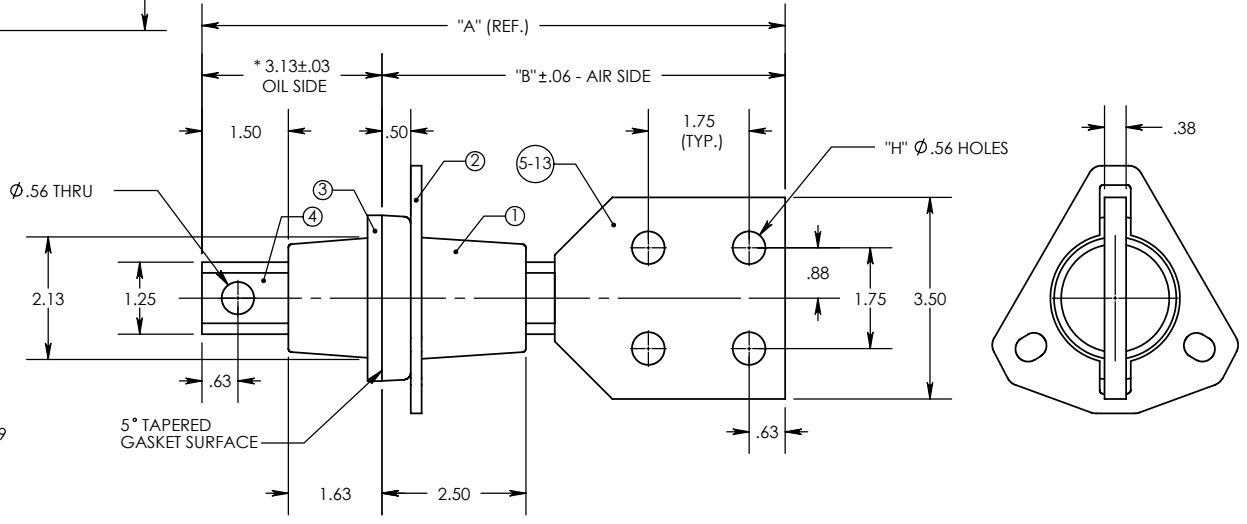
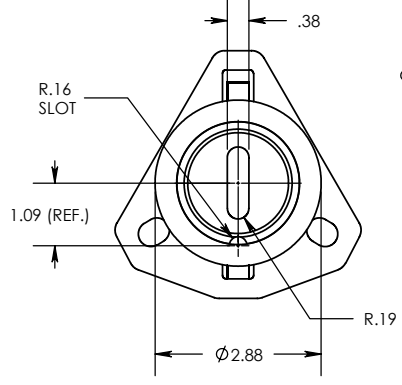
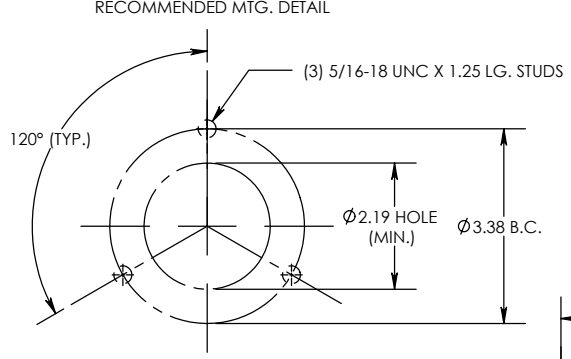
SIZE A	DWG. NO. 10-014-000	REV. 1
SCALE: 3	CAD FILE: 1000 SERIES	SHEET 1 OF 1

8 7 6 5 4 3 2 1

REV. 0 THE INFORMATION CONTAINED IN THIS DRAWING IS THE SOLE PROPERTY OF ENGINEERED POWER COMPONENTS LTD. ANY REPRODUCTION IN PART OR WHOLE WITHOUT THE WRITTEN PERMISSION OF ENGINEERED POWER COMPONENTS LTD. IS PROHIBITED.

CAD FILE: 1000 SERIES
 DWG. NO. 10-014-100

ITEM NO.	QTY.	PART NO.	DESCRIPTION	EPC PART NO.	DIM "A"	DIM "B"	"H"
1	1	10-014-1	BUSHING, BIS-A EPOXY				
2	1	98-000-022	CLAMP, MILD STEEL (ZINC DICHROMATE)				
3	1	645-110-010-0	1/4" GASKET, NITRILE 94-056 D68				
4	1	10-014-100 A01	STUD 1-HOLE, COPPER				
5	1	10-014-000 A02	SPADE (EXT) 4-HOLE, COPPER	10-014-100 0A E01T	10.13	7.00	4
6	1	10-014-001 A02	SPADE (EXT) 6-HOLE, COPPER	10-014-101 0A E01T	11.88	8.75	6
7	1	10-014-002 A02	SPADE (EXT) 8-HOLE, COPPER	10-014-102 0A E01T	13.63	10.50	8
8	1	10-014-003 A02	SPADE (EXT) 10-HOLE, COPPER	10-014-103 0A E01T	15.38	12.25	10
9	1	10-014-004 A02	SPADE (EXT) 12-HOLE, COPPER	10-014-104 0A E01T	17.13	14.00	12
10	1	10-014-005 A02	SPADE (EXT) 14-HOLE, COPPER	10-014-105 0A E01T	18.88	15.75	14
11	1	10-014-006 A02	SPADE (EXT) 16-HOLE, COPPER	10-014-106 0A E01T	20.63	17.50	16
12	1	10-014-007 A02	SPADE (EXT) 18-HOLE, COPPER	10-014-107 0A E01T	22.38	19.25	18
13	1	10-014-008 A02	SPADE (EXT) 20-HOLE, COPPER	10-014-108 0A E01T	24.13	21.00	20



- NOTES:
1. ALL UNSPECIFIED RADII TO BE R0.125
 2. ALL CONTACT SURFACES TO BE CLEAN & FREE FROM FLASH
 3. RATINGS BASED ON SIDE MOUNTED BUSHINGS WITH OIL IMMERSED SHANK AND SUITABLE TERMINATION AND LEAD CONNECTIONS

- MATERIAL:
1. E01 - BISPHENOL-A EPOXY, GREY
 2. HD ETP C11000 COPPER (CONDUCTOR), TIN PLATED
 3. MILD STEEL CLAMP (ZINC DICHROMATE PLATED)

- SPECIFICATIONS:
1. BASIC IMPULSE LEVEL 45KV
 2. CURRENT RATING..... 600 AMPS
 3. TEMPERATURE CLASSIFICATION..... -50 °C TO 110 °C

REVISIONS
 0

REV.	DESCRIPTION
0	

UNLESS OTHERWISE SPECIFIED DIMENSIONS ARE IN INCHES. TOLERANCES ARE:

ONE PLACE MM ±0.50
 TWO PLACE MM ±0.25
 TWO PLACE DEC. ±0.020
 THREE PLACE DEC. ±0.010
 ANGLES 1°

TEMPERATURE ±5 °C
 VOLTAGE ±5 %
 AMPERAGE ±5 %
 RESISTANCE ±5 %

* STATISTICAL DIMENSION
 NO. OF SAMPLES [1]

CAD GENERATED DRAWING, DO NOT MANUALLY UPDATE.

APPROVALS	DATE
DRAWN BY: DB	27/03/2003
CHECKED BY: RM	28/03/2003
ENGINEERING: DB	28/03/2003

TOOLING REF. T10-014-1
 PRODUCT GROUP 1000 SERIES

1.2 kV / 600A
 SECONDARY BUSHING
 (COPPER CONDUCTOR)

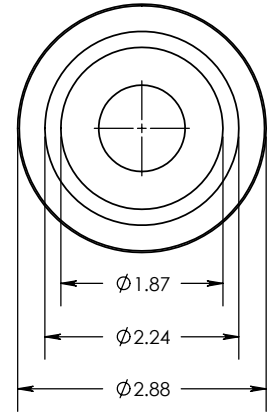
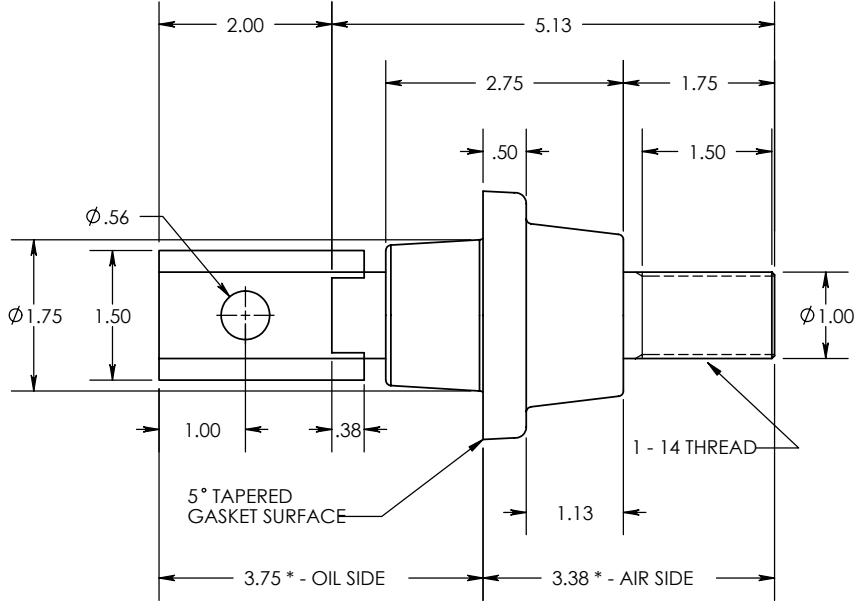
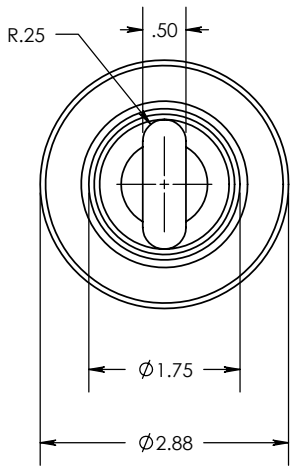
SIZE A DWG. NO. 10-014-100
 SCALE: 3 SHEET 1 OF 1

8 7 6 5 4 3 2 1

8 7 6 5 4 3 2 1

REV. 0
 THE INFORMATION CONTAINED IN THIS DRAWING IS THE SOLE PROPERTY OF ENGINEERED POWER COMPONENTS LTD. ANY REPRODUCTION IN PART OR WHOLE WITHOUT THE WRITTEN PERMISSION OF ENGINEERED POWER COMPONENTS LTD. IS PROHIBITED.

DWG. NO. 10-015-000
 CAD FILE: 1000 SERIES



NOTES:
 1. ALL UNSPECIFIED RADII TO BE R0.063
 2. ALL CONTACT SURFACES TO BE CLEAN & FREE FROM FLASH

MATERIAL:
 1. BISPHENOL-A EPOXY, E01 (INDOOR)
 2. C110 GRADE COPPER (TIN PLATED)

SPECIFICATIONS:
 1. BASIC IMPULSE LEVEL 30KV
 2. MAXIMUM CURRENT RATING..... 1200 AMPS
 3. TEMPERATURE CLASSIFICATION..... -50 °C TO 155 °C

REVISIONS
 REF.

0	
---	--

UNLESS OTHERWISE SPECIFIED DIMENSIONS ARE IN INCHES. TOLERANCES ARE:
 ONE PLACE MM ±0.50
 TWO PLACE MM ±0.25
 TWO PLACE DEC. ±0.020
 THREE PLACE DEC. ±0.010
 ANGLES 1°
 TEMPERATURE ±5 °C
 VOLTAGE ±5 %
 AMPERAGE ±5 %
 RESISTANCE ±5 %

* STATISTICAL DIMENSION
 NO. OF SAMPLES [0]

CAD GENERATED DRAWING, DO NOT MANUALLY UPDATE.
 APPROVALS DATE
 DRAWN BY: DB 06/15/2000
 CHECKED BY:
 ENGINEERING
 TOOLING REF. T10-015
 PRODUCT GROUP 1001 SERIES

1001 SERIES - 1.2KV
 LV BUSHING
 1200 AMP (MAX.)

SIZE A DWG. NO. 10-015-000 REV. 0
 SCALE: 2 CAD FILE: 1000 SERIES SHEET 1 OF 1

8 7 6 5 4 3 2 1